



**Third Quarterly Meeting
District International Service & Foundation Committees
February 22, 2025**



1

**Increasing Our Impact
Expand Our Reach
Enhance Participant Engagement
Increase Our Ability to Adapt**

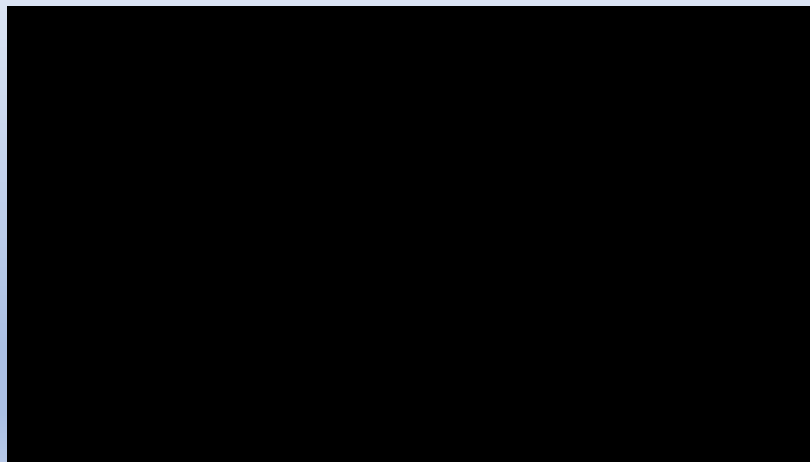


2



3

District Conference – Register Now!



4

Increasing Our Capacity by Learning More

Goals for 24-25 for the District International Service Committee

- Club ISC/Foundation Chairs using *Service Project Center* (min. 6)
- Club ISC/Foundation Chairs using *Myrotaryprojects.org* (min.12)
- Club ISC/Foundation Chairs joining Rotary Action Groups/Fellowships (+12)
- Attendance at Project Fairs (min. 15 Rotary members)
- Club ISC/Foundation Chairs completing more *Learning Center* courses (min. 8)
- Club articles in District Newsletters with photos (min.6)
- Develop capacity to understand INCREASE OUR IMPACT & Building Blocks of a Project



5

Increasing Our Capacity by Learning More

General Resources:

- [Conducting Community Assessments](#) gives guidance on how to involve community members in setting priorities and designing a project.
- The [Rotary Impact Handbook](#) helps members make and carry out a plan to take measurements as part of their service projects so they can document the results.
- [Grant Responsibilities by Leader](#) explains club and district roles and lists resources to help leaders carry out their duties.
- Rotary's [Service Project Center](#) offers opportunities to manage your projects, share stories and suggestions, and find partners.
- The [Learning Center](#) offers many courses and resources, including information about fundraising and participating in grants.



6

Learning Center Updates

Learning Center highlights

New and updated courses

We've added and revised courses to support learning facilitators, strengthen service projects, and help members understand Rotary's Action Plan.

Get Ready: Club Learning Facilitator (NEW)

Learn how you can help develop your club's learning plan, motivate club leaders and members to attend learning events, and create skill-based learning opportunities for club members.

Service Project Essentials (NEW)

Help your club plan service projects using the resources that are available through your Rotary membership. Learn about positive ways to involve the local community, have a chance to reflect on your current service projects, and strategize ways to increase the impact your club is having in the community.

Rotary's Action Plan and You (UPDATED)

Learn how Rotary's Action Plan can help your club increase its impact, expand its reach, better engage members and participants, and keep adapting to a changing world.

Featured courses

February is Peace and Conflict Prevention Month. If you want more information on these topics, try taking:

- [All About Rotary Peace Fellowships](#)
- [Resiliency learning plan](#)
- [Forgiveness, Societal Healing, and Rotary learning plan](#)
- [Essentials of Understanding Conflict](#)

You can use these courses to facilitate discussions on peace and conflict or recommend them to members who are interested in developing skills in these areas.



7

New Course: Service Project Essentials

The new *Service Project Essentials* course is now available in the Learning Center.

The course outlines **crucial steps to project planning**: defining service, community assessments involving local stakeholders, budgeting, and evaluation.

The course is available in English and additional languages will be available in April. The 4-part course will take less than 1 hour, including interactive questions and worksheets to expand on the course.



8

Club Questions to Answer

Consider these questions as you and your club discuss new or upcoming service projects:

1. What impact has your club made with your current projects?
2. When did you last evaluate your service projects?
3. How does your club determine what service projects to complete in your community?
4. What community organizations or leaders have you engaged with to determine local priorities?
5. Who in your club or district and what partners in the community (like your district resource network) can provide guidance on planning and implementing your service project?

9

Grant Report from TRF

During the 2023-2024 Rotary year, The Rotary Foundation awarded \$82 million for 1,285 programs supporting large international activities with sustainable, measurable outcomes.

From this, 102 grants provided \$6.2 million in support of programs focusing on maternal and child health.



10

Impact & Sustainability

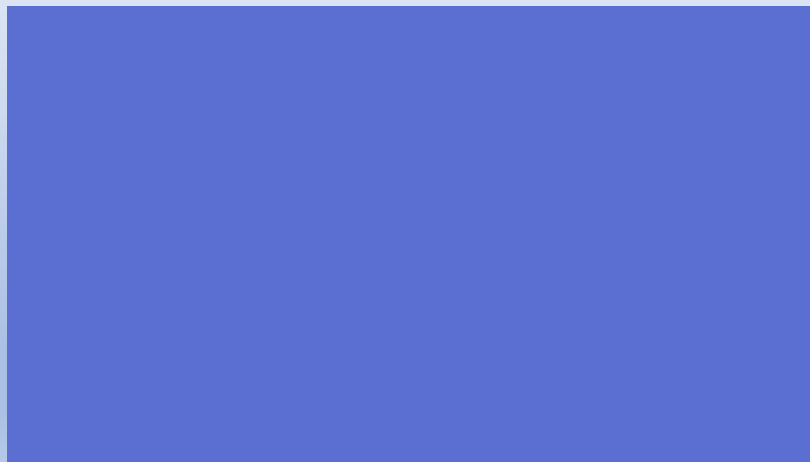
In Rotary, we define impact as the positive, long-term change resulting from our actions. These are measurable improvements that wouldn't have occurred otherwise.

We define sustainability as the capacity for outcomes to be maintained locally and serve the community's continuing needs.



11

Understanding Impact



12

2024-2025 Project Fairs

- In-person Colombia – brief report from Bruce Higgs (Gananoque)



13

2024-2025 Project Fairs (cont'd)

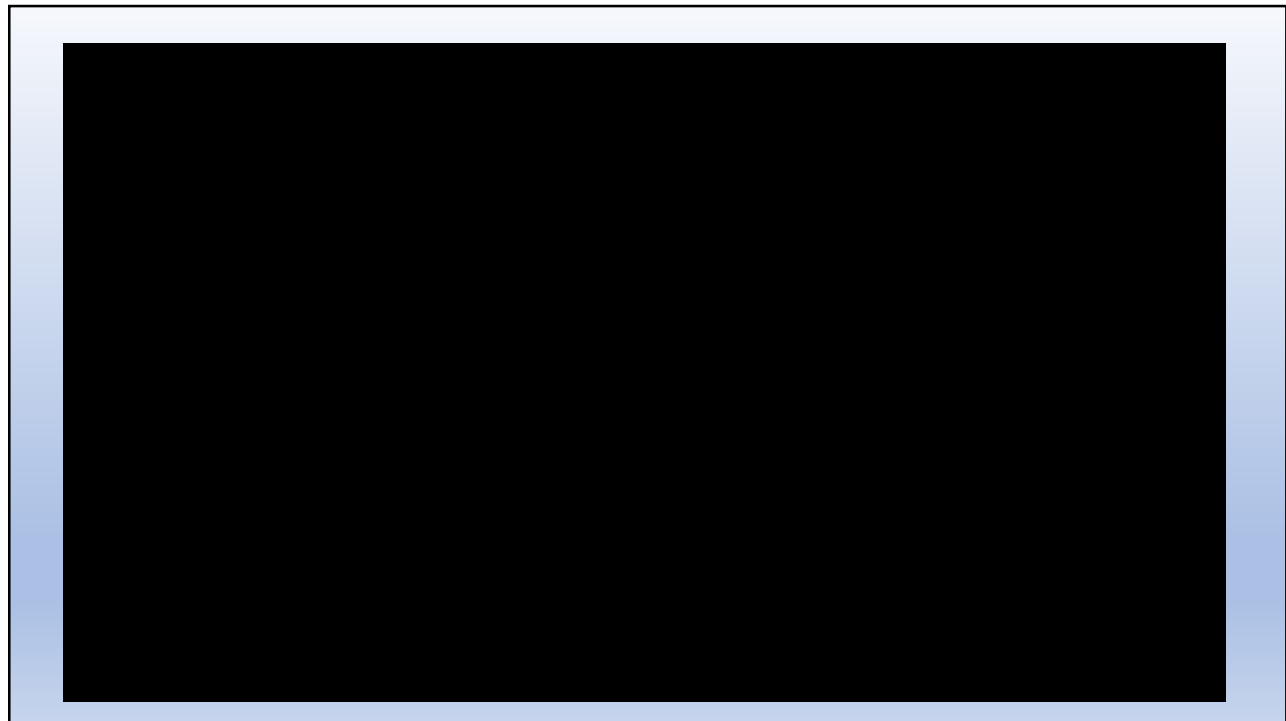
- UPCOMING – virtual or hybrid



Started at 9am!

https://us06web.zoom.us/j/7194545921?pwd=ZBpVk_d0v8EERpH4omu7cNnr1gtEzbi.1&omn=85260417601

14



15

Rotary Club of Gananoque – Buga Colombia Mobile Clinic Project-2025

To provide a Mobile medical Clinic to offer basic and specialized health services to rural surrounding communities. This Mobile Unit will provide health services related to general and specialized medical consultations, laboratory studies, non-invasive diagnostic imaging and ultrasounds. It will benefit special populations, the elderly, indigenous, migrants and other vulnerable and populations in 5 neediest communities. A population of 240,000 will benefit

The Rotary Club of Gananoque has taken the lead. We now are asking for your support

We will begin a Global Grant application

Cost of Project \$87,632 US

Buga Club \$34,434 US

District 4281 \$1000 US

Gananoque Club \$5000 US

Local Club support \$13500 US **needed**

DDF support \$18500 US **needed**

Rotary Foundation \$14800 US

Help us to raise the \$13500 from local clubs

Contact Rotary Club of Gananoque

Bruce Higgs thehiggs100@hotmail.com

613-449-2035 cell

613-548-8378 home

16

Rotary Club of Gananoque – Club Medellin El Poblado Ultra-Sound Machine

The E.S.E. Hospital San Vicente de Paul serves a population of 86,081 in the Municipality of Caldas near Medellin Colombia. The San Vicente de Paul Hospital does not have an Ultra-Sound machine to perform radiological studies. As a result, patients must be referred to other institutions that offer this service causing delays in resolution times and increasing costs. Additionally, it affects medical staff, who require these exams to make informed decisions about the appropriate treatments for patients. Currently they require 7,466 ultrasound this year with projected increases in 2026 and 2027. Ultrasounds are required for exams to abdomen, urinary tract, pelvic and obstetric.

The Rotary Club of Gananoque will take the lead but need your support:

We will begin a Global Grant application

Cost of project \$37400 US

Medellin Poblado Club \$1500 US

Medellin Caldas Club \$2500 US

District 4271 DDF \$3000 US

Rotary Club of Gananoque \$3000US

Local Club support \$7000US **Needed**

District 7040 DDF

\$10000 US **Needed**

Rotary Foundation

\$10400 US

Help us to raise the \$7000 from local clubs

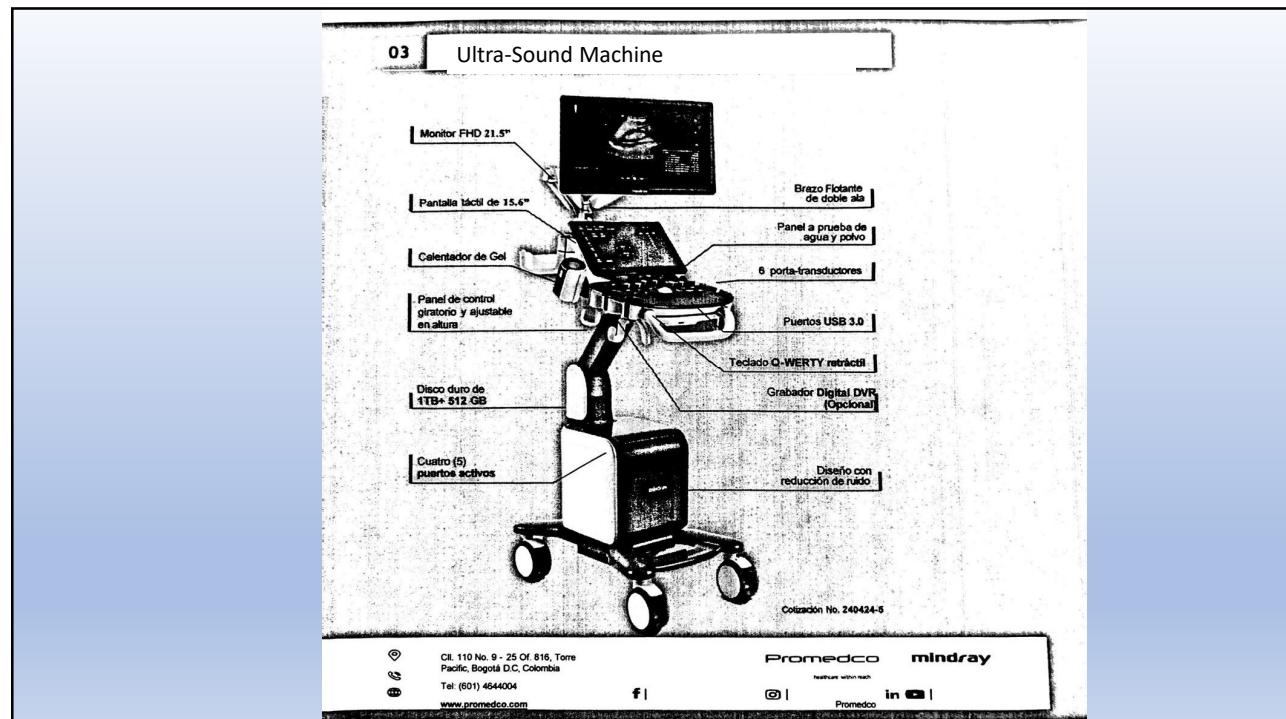
Contact Rotary Club of Gananoque

Bruce Higgs thehiggs100@hotmail.com

613-449-2035 cell

613-548-8378 home

17



18

2024-2025 Project Fairs (cont'd)

District 4465 Project Fair II (Peru)

- 14 March, 2025 at 8:30AM
- Virtual fair
- info@projectsfair.rotary4465.org
- Zoom meeting:
<https://us06web.zoom.us/j/83097427937?pwd=2WpZHBbLb7Qfliscx6GcEeR4FHNbViv.1>
- Meeting ID: 830 9742 7937 PW: ROTARY
- Register at:
<https://www.projectsfair.rotary4465.org/invitation-international/>



Uniendo America Project Fair (Panama)

- 15-17 May 2025
- gobernador@rotary4240.org

19

International Service: Rotary Friendship Exchanges

District 2482 (Bulgaria) October 28-November 11, 2025

- Arrive/depart Sophia (the capital and cultural center)
- Flights approximately CDN \$1650/US \$650
- Deposit to secure your place & fund hosting them in Spring/Summer 2026 (CDN\$150/US\$105).
- Bring a hostess gift for each of your Bulgarian hosts
- Complete form, if interested.



20

International Service: Rotary Fellowships

- Rotary Fellowships exemplify Rotary's inclusivity by welcoming any interested individual regardless of their Rotary affiliation and showcasing the many vocations, cultures, identities, and interests represented by the Rotary family.
- In 2024, 110 Rotary Fellowships engaged more than **54,000 people** across 150 countries in building communities around shared passions and identities: 89% were Rotarians, 5% were Rotaractors, and 6% were non-Rotary members.
- Fellowships offer leadership opportunities to our members and participants. In 2024, Fellowships engaged 867 Rotarians, 19 Rotaractors, and 45 friends of Rotary in leadership roles with women holding more than 30% of leadership roles across Rotary Fellowships.
- 68% of Fellowships organized recreational activities, 29% offered professional development opportunities, and 53% offered opportunities for service activities.

21

Learning by Query



**Understanding IMPACT and the
Building Blocks Concept
ACTIVITY**



22

Measuring Results: Demonstrate Your Impact



23

What We'll Cover

- Background
- Definition of Impact
- Building Blocks of Impact
- Interactive Game



24

OVERVIEW OF IMPACT



Rotary's Vision Statement

TOGETHER WE SEE A WORLD
WHERE PEOPLE UNITE AND TAKE ACTION
TO CREATE LASTING
CHANGE ACROSS THE GLOBE
 IN OUR COMMUNITIES AND IN OURSELVES

25

ROTARY'S ACTION PLAN

ROTARY'S STRATEGIC PRIORITIES AND OBJECTIVES

INCREASE OUR IMPACT

- Eradicate polio and leverage the legacy
- Focus our programs and offerings
- Improve our ability to achieve and measure impact

EXPAND OUR REACH

- Grow and diversify our membership and participation
- Create new channels into Rotary
- Increase Rotary's openness and appeal
- Build awareness of our impact and brand

ENHANCE PARTICIPANT ENGAGEMENT

- Support clubs to better engage their members
- Develop a participant-centered approach to deliver value
- Offer new opportunities for personal and professional connection
- Provide leadership development and skills training

INCREASE OUR ABILITY TO ADAPT

- Build a culture of research, innovation, and willingness to take risks
- Streamline governance, structure, and processes
- Review governance to foster more diverse perspectives in decision-making

26

IMPACT

The positive, **long-term** change resulting from our actions

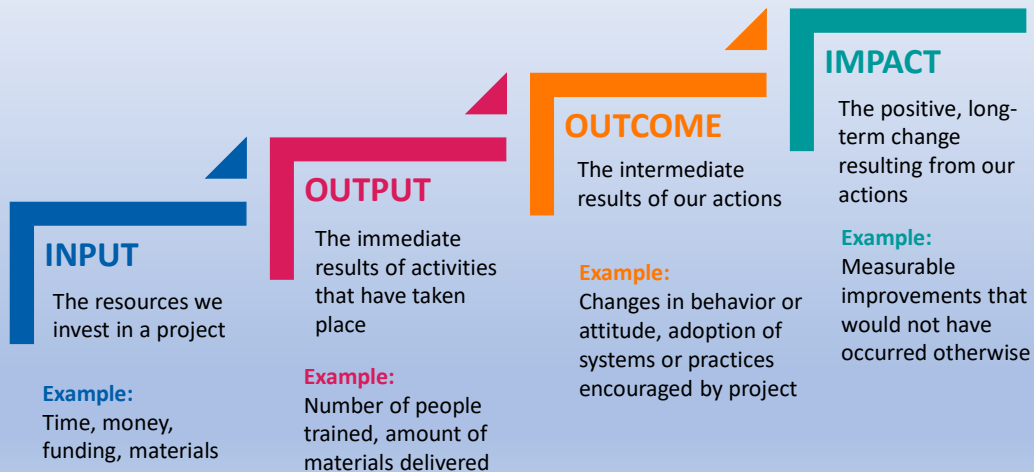
- Initiated by the community:
 - **NEW Community Assessment**
- **Sustainable: Community owned**
- **Measurable Indicators**



27

What Impact Looks Like

Building Blocks



28

WHY MEASURE?

- We measure to:
 - Understand whether the project is on track to meet its goals
 - To adjust the project plan
 - Determine if the project met its intended outcomes
 - Learn and share knowledge from the project



29

The building blocks can be used as a common language with partners

- Center the discussion
- Remind everyone of the roadmap to success
- Help capture lessons learned

Rotary 

30

**Think about the building
blocks as a journey**



31

**BUILDING
BLOCKS
ACTIVITY**



32

Learning Objectives

By the end of this exercise, you should:

1. Understand the building blocks to **Impact** by building a logic model
2. Understand how the building blocks of a logic model (inputs, activities, outputs, outcomes) can help you to assess whether Impact will likely be achieved
3. Understand how measurement is used to assess project/program outputs and outcomes successes and challenges



33

Game Instructions

This activity includes the following materials:

- “Building Blocks to Impact” Logic Model – *to be used as a reference*
- Titles of the four categories (input, output, outcome, impact) that make up the “Building Blocks to Impact” Logic Model
- A project description for the Area of Focus
- A shuffled card deck that includes:
 - Input, output, outcome, and impact statements related to the project description
 - Indicators to be used to measure the project’s specific outputs and outcomes
- Answer Key – *will be distributed to your table toward the end of the exercise*
- Reflection Questions for the Area of Focus

34

More Game Instructions

1. Referencing the “Building Blocks to Impact” Logic Model, **locate the four building block category titles and place the titles horizontally across your table: input → output → outcome → impact**
2. Read the project description
 - a. **Sort cards into input, output, outcome, impact, or indicator piles. Place the card under the corresponding building block category.**
 - b. **Indicators can be placed alongside the corresponding “output” or “outcome”.**
3. Make sure that **your logic model shows a logical horizontal connection** among inputs, outputs, outcomes, and impact.
4. Once you have completed placing all cards into the logic model, please ask for **the answer key and compare your results**
5. Go through **the reflection questions together as a group**



35

Discussion Questions

- How has your understanding of Impact changed after participating in this activity?
- When you review project proposals or final reports, what type of data do you usually see?
 - o Why do you think this is?
- What assumptions are built in when we only measure outputs, and think we have made the impact we are seeking?



36

LUNCH

Want to join the Project Fair in Ecuador during lunch??

<https://us06web.zoom.us/j/7194545921?pwd=ZBpVkd0v8EERpH4omu7cNnr1gtEzbj.1&omn=85260417601>



37

Next Meeting - May 31st



38