



What are Rotary scholars and  
how do I find one ???

Global Grant Scholars OR Peace Fellows???

# Know the rules of the game

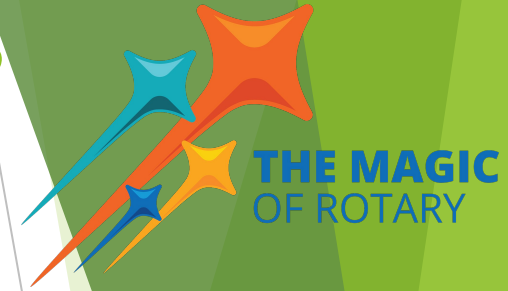


Review the areas of focus – studies must relate to one of them:

- 1) Promoting Peace
- 2) Fighting Disease
- 3) Water, Sanitation and Hygiene
- 4) Saving Mothers & Children
- 5) Supporting Education
- 6) Growing Local Economies
- 7) Supporting the Environment (the most recent one!!)



# What is the basis for the identified criteria?



Amount of money available - **one** scholarship per year - \$35,000  
(\$17,500) DDF + \$17,500 endowment funds **or** TRF funds  
or \$35,000 from an endowment fund (Stoiber or McMunn)

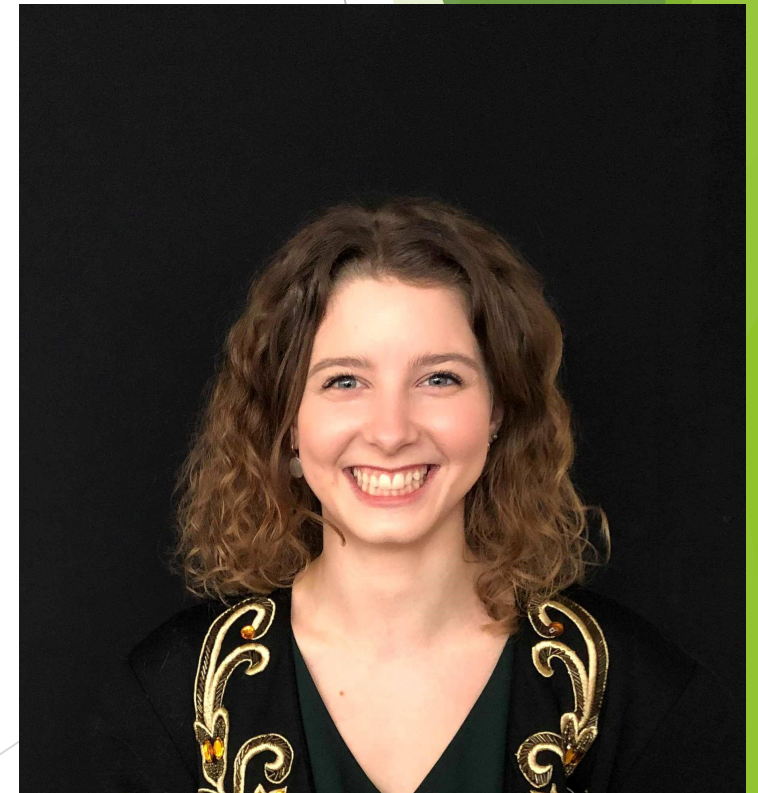
“First year of first Master’s degree” as understood in  
the district:

ON, QC, NY, NU

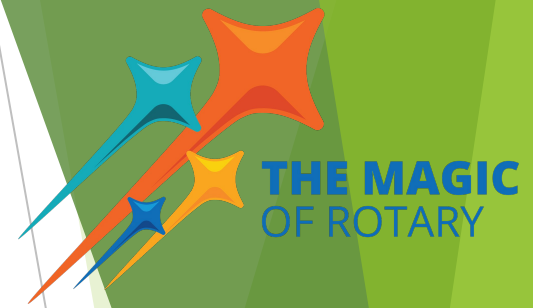
World understanding and peace -  
find out about the world and its peoples!

For D 7040 residents only ...  
verified through local club endorsement

‘Roll with the punches’ factor is important +  
broad range of abilities/experiences ie leadership  
community service, clear goals and ideas ....



# Know the criteria for OUR District 7040 scholarship



- 1.the candidate must meet the criteria as set by the Global Grant Scholarship application form;
- 2.the candidate must be entering the **first year** of a **first** Master's degree program;
- 3.must have the endorsement of a District 7040 Rotary Club;
- 4.must be a citizen of Canada or the US living long-term within the boundaries of District 7040 (ie where you go home for the holidays not where you are currently attending university - a quick search on the Rotary International website will provide the information re: the boundaries of the Rotary districts);
- 5.must be studying **outside** of District 7040 **AND** outside of his / her home country;
- 6.must provide proof of acceptance into the university program of his / her choice for the upcoming academic year;
- 7.must submit a copy of his / her current curriculum vitae including volunteer activities;
- 8.must submit at least two letters of reference;
- 9.must **not** be a linear descendant or a relative of a Rotarian.
- 10.and, according to RI's "Conflict of Interest Policy," *former Rotarians shall continue to be ineligible for a period of 36 months after termination of their membership."*



# So - what does the perfect candidate look like?



- High academic standing
- Sports/arts involvement
- Volunteer experience
- Self-starter
- Curious
- Personality +
- Extras: languages, awards, recognition, achievements, travel, sense of adventure ...



# Where do we find them?



Local university student services department

Local high school guidance departments

Word of mouth in the community

Club website advertising

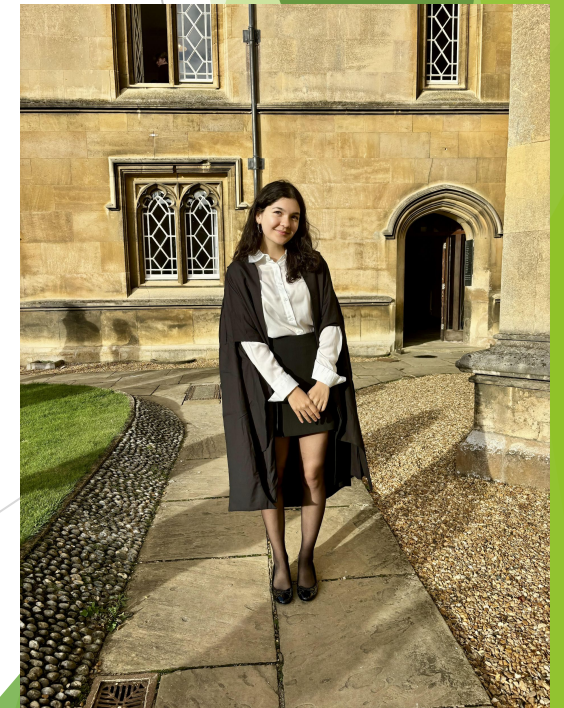
Local media stories

Referred by previous Global Grant Scholars





What do they look like?  
You have seen them throughout this PPT presentation!



# Rotary Peace Fellowships

For individuals who have 3-5 years of work experience, in a peace and conflict resolution field **AND** who want to improve their skills. **NO ROTARIANS!!**





# 2 types of Peace Fellowships

1. **Two-year Master's degree at specified universities**  
Duke University and U. North Carolina at Chapel Hill  
International Christian University, Tokyo, Japan  
University of Bradford, England  
University of Queensland, Australia  
Uppsala University, Sweden
2. 50 Master's fellowships awarded each year

**OR**

1. **2-month certificate program (10 weeks on site + ...)**  
Makarere University in Uganda (Africa)  
Bahçesehir University in Istanbul, Turkey (Middle East or North Africa)
2. 80 certificate program scholars each year



# Where do we find them?

In the civil service, (federal, provincial/state, municipal ...)  
In law enforcement,  
In conflict counselling - public or private,  
In personal counselling - public or private,  
In military related careers,  
In careers with a diplomatic connection...

Candidates must have a strong commitment to conflict resolution and peace building.

There is no restriction on the number of candidates that the District can recommend in any Rotary year - BUT TRF makes the final decision.

