



ESsential News March 2022

E&S Committee:

Co Chairs: David Dippie, RC Keilor East
solatube@bigpond.com
Donna Martin, RC Bacchus Marsh
Donna@balancedfinancial.com.au

Peter Berg, RC Melbourne
pberg8@bigpond.net.au

Lesley McCarthy, RC Flemington
Kensington Lillico2009@gmail.com

Rob Anderson, RC Canterbury
Fabienne Nichola, RC Camberwell
Ted Waghorne, RC Canterbury

Dates for your calendar:

Monday 14 March at 5.30pm
Rotary Club of Sydney's Climate Action
Group
[Humanitix](https://www.humanitix.com)

ESRAG ANZPI Chapter Meeting
Thursday 17 March 2022 at 7.30pm
<https://us02web.zoom.us/j/5598376225>

ESRAG Oceania Chapter Meeting
Tuesday 19 April 2022 at 7.30pm

District Conference Albury
22-24 April
<https://www.trybooking.com/BWKQC>

National Tree Day
Sunday 31 July
Schools Tree Day Friday 29 July
[Our Story - National Tree Day](https://www.planetark.org)
[planetark.org](https://www.planetark.org)

Join ESRAG:

<https://www.esrag.org/membership-form>
US\$30 per year or
US\$125 for 5 years.
Just US\$15 per year for ages 17-25.

From our District Co Chairs:

We claim to be "People of Action", what is your Club going to do in the remainder of this Rotary year to Protect the Environment? What are you going to do? We know there are still some restrictions, but they are reducing. Let's concentrate on what we can do, not what we can't.

Councils and land care groups are looking for help. The Covid19 restrictions and labour shortages prevented a lot of maintenance work being done. If you contact your local groups, you will find many opportunities to contribute. Removing tree guards and weeds is something anyone can do.

Are you going to be planting trees on National Tree Day? Talk to your local council, contact Planet Ark. Existing projects, no cost all they need is you. I know a lot of us are getting old and some are not as fit as we used to be. This does not prevent your Club from contributing to a planting event, by providing the food.

COVID19 has affected us in many ways and we need to be creative and work with what we have. This is the reason that the District 9800 Regional Container Project was created. Only \$500 to be a partner in a great recycling / repurposing project, with a great international outcome. The opportunity to get \$10,000 to support your own DIK container project. If your Club is not near your DIK Store the DIK Volunteers will pack your container for you. A successful D9800 project will lead to similar projects in other Districts. When we can't do things on our own, let's find ways to achieve our goals by working as a team.

Rotary is non-political, but this does not prevent us encouraging all of the candidates and parties in the upcoming elections to commit to more to protect the environment, by taking action on climate change. If you are not happy with what the parties are proposing – tell them. If you care about the environment, contact the candidates in your area and tell them what you want them to do.

We look forward to seeing you at Conference. Please say hello and tell us how we can help you achieve your environmental goals.

David and Donna



District Conference Albury 22-24 April

We will be there and need help on the Environment & Sustainability stand. Please contact David or Donna to let them know of your availability.



<p>Rotary District 9800</p> <p>Conference 2022 Let's meet together in Albury 22nd to 24th April</p> <p>This week's featured Speaker is:</p> <ul style="list-style-type: none"> Ron Finkel AM Ron established Project Rezone - a project that seeks to build bridges between Israelis and Palestinians through health. It is active in Australia, Canada, Israel and the US, and its programs have touched the lives of many thousands of people in Israel and Palestine. Dr Noor Shah Kamawal Targeted by the Taliban, escaped Afghanistan with his wife and seven children with the aid of Rotary. Lucy Bloom Her background in advertising, healthcare and international charitable activities will both inspire and challenge us with her rule breaking ideas. <p>Entertainment:</p> <ul style="list-style-type: none"> The Scots School Albury Pipe Band - crowned World Champion Pipe Band for 2020! <p>Accommodation Update:</p> <ul style="list-style-type: none"> Click here to see the accommodation options still available. <p>Suggested activities for partners (not attending the Conference on the Saturday), and post conference:</p> <ul style="list-style-type: none"> Albury CBD Walking Tour Bonegilla Migrant Experience Vindyanterra Sculpture Walk Murray Art Museum Albury Jindera Pioneer Museum and Historical Society 	<p>Conference Update 10/03/2022</p> <p>Bookings so far: 294 attendees from 48 clubs with 68 attending for the first time. We have a great conference program and here is just a snippet.</p> <p>To book your Conference experience, go to: https://www.trybooking.com/BWKQC</p> <p>Showcasing your Club's Project at Conference</p> <p>Does your club have a project that is worth shouting about? Then email Jane Pennington to book your stand quickly, as 20 stands are booked so far!</p> <p>jane.pennington@rotary9800.org</p> <p>Who's for Golf in Albury on Friday 22nd April?</p> <p>Green Fees \$25, Buggy \$40. Tee off time: 11am</p> <p>To secure your spot, contact Ivan Vojtya on mobile: 0416 210 002</p> 
--	--

District 9800 Donations in Kind Container Project

Is your club looking for an international project?
Do you have \$500 to put towards a shared project?

It's a very affordable way for clubs to be a Partner in a recycling project designed to improve conditions in a developing country. Clubs work together funding a shipping container and are able to select the project they want to assist.



Clubs are required to donate \$500 to become a Project Partner in the Regional Container Project. Each Partner club can nominate an international project as a candidate. [Complete the form at DiK.](#)

Nominations close on 4 April 2022.

The total value of the project will be up to \$10,000 including a Rotary Foundation Grant of \$3000 for projects that qualify. DIK volunteers will assist with packing the container if clubs need assistance.

The winning project will be selected by the District 9800 District Governor and announced at the District Conference on 24 April 2022. For more information please contact David Dippie Solatube@bigpond.com

Please complete the form detailing:

Project Name

Project Coordinator Email Phone

Destination and Port

An overview of the project including who will benefit and the goods that will be shipped.

A copy of the preliminary wishlist,

We need your assistance to promote your project and maximise the chance of it being chosen. If you provide the information and photos, our aim is to have it featured in the Networker and the District 9800 Environmental Sustainability Newsletter. We also want to feature it on several Facebook pages. High resolution interesting photos are required, please send them separately.

To donate go to www.rawcs.org.au and click donate.

Project details are: No 31-2014-15 (please specify D9800 Regional Container and include your Club Name)



Moonee Valley Council partnership

Further to the wildlife habitation and pollination corridor project with Rotary Flemington Kensington last year, a very strong relationship has been developed with council and local environment groups.

Utilising the Greening the West funding, a number of tree planting days are planned for the next 3 months. The Rotary Clubs of Keilor East and Flemington Kensington will work with a number of these groups including Moonee Valley Sustainability, the various Friends of rivers and creeks and Urban Bushland Initiative.

The dates and details will be advised as decided and all Rotarians and their families will be welcome to join in this wonderful environment and public image activity.



The Rotary Club of Eltham joined with Victoria's Big Build Road Projects to plant over 6000 trees last November as part of the Fitzsimmons Lane upgrade.

Primary school students and their families played a central role in the "Make your Mark—Plant a Tree" program sowing the locally grown and indigenous seedlings at home and in the community.

Rotary distributed 5750 seedlings in compostable bags with 'how to plant' guides to 14 primary schools and students for them to plant at home.

Eltham primary school students assisted Rotary and several community groups in the planting of a further 1 000 trees. 300 of these were planted earlier in the year along the Diamond Creek Trail at Wattle Glen, to mark National Tree Day on 1 August. The community planting events for the remaining 700 seedlings were then adapted to suit restrictions, and saw individuals from a range of community groups collect and plant seedlings in their own locations.

Seedlings were sourced from Edendale Community Environment Farm and donated as a part of the Fitzsimons Lane Upgrade.



—FROM TINY SEEDS, MIGHTY TREES CAN GROW—

Tree Growing at Balwyn Rotary

Again, this year, the Club's Tree Growing Sub committee plan that, with the help of our volunteer-members, the Club will grow a small forest of young native trees.

Two destinations are in mind for these trees. One in fire-ravaged East Gippsland (Lakes Entrance and surrounds), the other in "Trust for Nature" farm zones around Port Campbell (Princetown). Seeds are being sourced from each of these areas now.

Seed-planting is planned for Spring (September-October), and the project is currently being organised. There are a number of members already committed and it is a great opportunity to involve family members, friends and children.

For growers to see these little critters emerge from the soil and take the shape of a young tree or shrub is actually a lot of fun. They will be using the same method as in the successful growing event in 2021, which resulted in delivery of 985 young trees to Mallacoota in June. This time the team are aiming higher—for 2,000 seedlings.

All you need is a small area in your yard, veranda or balcony - as little as 1 square metre, to hold 2 or 3 trays of seedling tubes. Some sunshine is important – about 2-3 hours a day (when it shines!).

Everything will be supplied:

- * Seeds, Growing Tubes and Trays,
- * Potting Mix,
- * Native fertiliser,
- * some instructions
- * training and support
- * tree-minding service if you want to go away and are unable to water your trays during a hot period

There's also the possibility of helping to deliver some young trees to their destinations in Autumn next year, and even planting some!

For more information or to be involved contact Murray Wilkinson on Mob: 0425 713 007



www.trustfornature.org.au

Posters and promotional materials:

ESRAG Oceania members have produced a number of posters about different aspects of environment and sustainability. These are available as pdf's for clubs to use in their promotional posts, meetings, events and conferences.

Posters have been created for Bees, Citizen Science, Circular economy—education, medical, hospital, mobility aids, playgrounds as well as solar, tree planting, environment general, clothing, mangroves.

If you would like any of these please contact Lesley.



- up to 100 threatened land-based species and birds
- Nearly half a billion animals have died in recent Australian bushfires



NEEDS:

- Promote ecological restoration
- Sustain wildlife and vegetation diversity
- Focus on pollination-friendly vegetation
- Increase seed bank capacity
- Reduce waste and landfill
- Eliminate plastic
- Clean Oceans and Rivers

Rotary ESRAG Oceania

How can we support Bees and other Pollinators ?

Photo provided by Peter Belmont

We need pollinators for much of our food. Bees are one of the most important food pollinators. And they are in danger. There are lots of things we can all do. We can:-

- Plant Bee friendly and Bee attracting vegetation
- Use organic based weed killer or hot water
- Become a Citizen Scientist to observe our insects
- Provide Trees for Bees
- Have bee baths/water saucers/bee hotels in your garden
- Support local beekeepers

To join ESRAG : Find us on www.esragoceania.org

Rotary ESRAG Oceania

We can help to save lives and improve patient care

Photo courtesy DRK

Equipping hospital is one of the most effective ways to improve health care in developing countries. There are lots of things we can all do. We can:-

- Work with your local hospitals and encourage them to donate their surplus reusable equipment and consumables.
- Help to get the donations to the Store
- Help to sort and pack the goods
- Adopt a hospital and sponsor the shipping cost.

Donations in Kind, the better alternative to landfill.

To join ESRAG : Find us on www.esragoceania.org

Rotary ESRAG Oceania

Protecting the Planet

Rotary International is committed to Environmental Sustainability, these are some of our projects.

Solar for Remote Island Schools Fiji
Many island schools struggle with no electricity supply, or rely on dirty diesel generators. They can barely afford to run a couple of hours per day. This project provides clean, free energy for lighting and computers.
Multi Rotary Club Australian Project

Light Up Timor Through Enterprise
The Light Up Timor Through Enterprise Project is empowering a local social enterprise in Timor-Leste to pilot 300 Pay-As-You-Go (PAYGO) solar energy household installations in the remote, rural communities.
Rotary Club of Doncaster, 9850

Recycled School Furniture for Timor Leste
Many schools in developing countries have no furniture. If shipping funds were available Rotary could place all of the surplus reusable educational equipment Australia produces. Diverting the funds used to destroy needed reusable equipment and turn it into landfill, to subsidise shipping costs is a much better sustainable alternative.
Rotary Club of Kallor Project

Rotary Overseas Recycled Playgrounds
Many Victorian Councils are choosing to have Rotary collect their surplus reusable playground and donate the landfill fees. Using free volunteer labour, the donation covers the shipping.
Supported by many Victorian Rotary Clubs

A new playground in Timor Leste Primary School

Ask for more information or www.esraganzpi.org

Rotary ESRAG Oceania

Choose wisely ... Our clothing choices impact our Environment

We produce way more clothes than we need, and many are discarded after a couple of wears - most to landfill, even though we could easily reuse or recycle them. Synthetic clothing releases microfibres when washed or worn and these significantly contribute to plastic pollution in our oceans. There are lots of things we can all do. We can:-

- Choose clothing for Rotary apparel and ourselves made from organic, natural fabrics or recycled fibres (including labels).
- Purchase from ethical, sustainable companies
- Refuse plastic packaging on our purchases whenever we can
- Avoid fast fashion and apparel that has limited use
- Reuse, repair, donate or recycle clothing we no longer wear.

Textile recycling saves thousands of tonnes of waste going to landfill.

To join ESRAG : Find us on www.esragoceania.org

Rotary ESRAG Oceania

Equip schools and provide students with a better future

Equipping schools is one of the most effective ways to improve education in developing countries. There are lots of things we can all do. We can:-

- Work with your local schools and encourage them to donate their surplus reusable equipment and consumables.
- Encourage the school to contribute to the shipping costs
- Help to get the donations to the Store
- Adopt a school and sponsor the shipping cost.

Donations in Kind, the better alternative to landfill.

To join ESRAG : Find us on www.esragoceania.org

Rotary ESRAG Oceania

Citizen Science Opportunities

What's Offering

Photo provided by Peter Belmont

There are many Citizen Science opportunities for you and your Club. Take part in:-

- Great Backyard Bird Count
- Water Watch, Earth Watch
- Big Bushfire Biodiversity
- Collecting Weather data and Landscape Changes
- Frog and Toad Population Counts
- Observe Coral Bleaching
- Local Plant and Pollinator counts
- Monitor your own tree planting or Rotary Park

To join ESRAG : Find us on www.esragoceania.org

LET'S HEAR IT FOR THE

BEEES



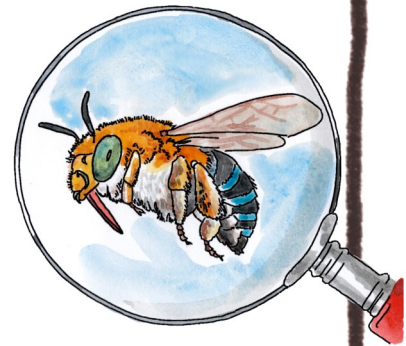
Queen bees can lay over
2,500 eggs a day



It takes 21 days for an egg to
develop into an adult bee



There are more
than 20,000
bee species



Bees have
five eyes
and six
legs



Rotary



ESRAG
ENVIRONMENTAL
SUSTAINABILITY
ROTARY ACTION GROUP

Oceania
AUSTRALIA
NEW ZEALAND
PACIFIC ISLANDS



Rotarians
for BEEES
An Initiative of the Rotary Club of Canterbury

@brenna.quinlan

Thanks to Ian Dempsey at Rotary Mitchell South for this poster.