



ROTARY GRANTS

ROTARY GRANTS

- Global grants
- District grants



GLOBAL GRANTS

- Large, long-term projects
- Sustainable, measurable outcomes
- Alignment with areas of focus
- International partnership
- \$30,000 minimum budget
- World Fund match



AREAS OF FOCUS

- Peace and conflict prevention/resolution
- Disease prevention and treatment
- Water and sanitation
- Maternal and child health
- Basic education and literacy
- Economic and community development



SUSTAINABILITY

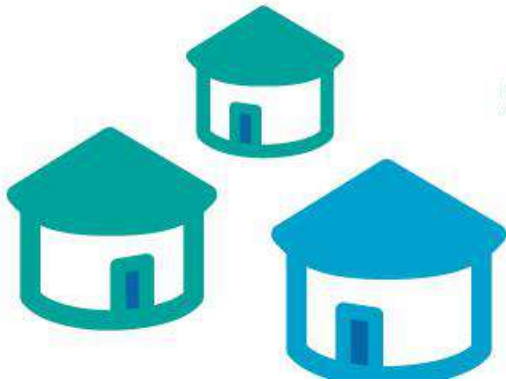
Sustainability means different things to different organizations.

For Rotary, sustainability means providing long-term solutions to community needs that the beneficiaries can maintain after grant funding ends.



Start with the community

Identify a need and develop a solution that builds on community strengths and aligns with local values and culture.



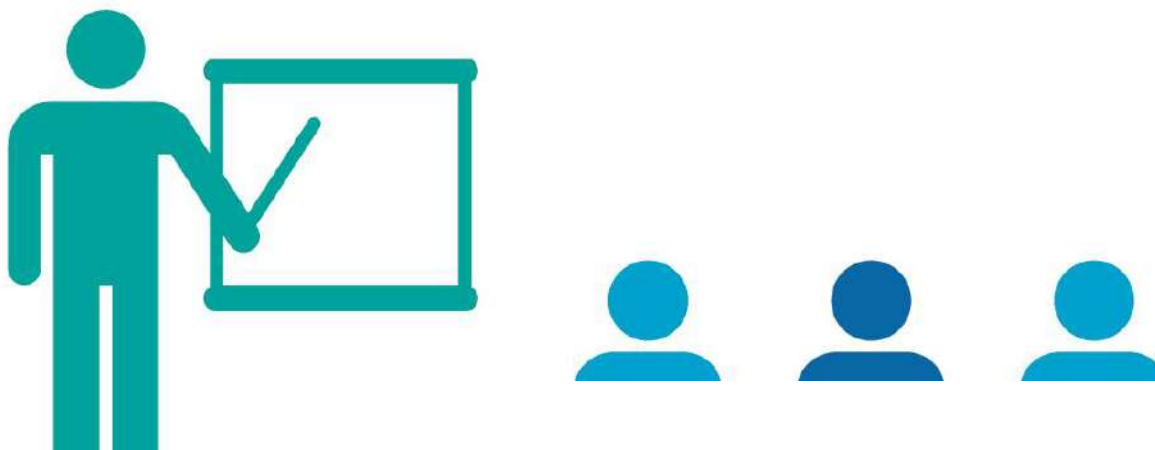
Encourage local ownership

Identify key community members who can help pioneer lasting improvements.



Provide training

A project's success depends on people.



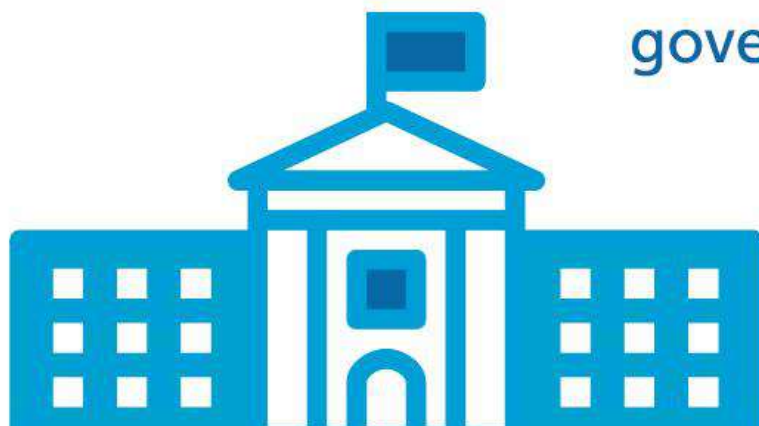
Buy local

Purchase equipment and technology from local sources.



Find local funding

Get local funding through governments, hospitals, companies, and other organizations.



Measure your success

Develop clear and measurable project outcomes and determine how you will collect your data.





**Humanitarian
Projects**

Scholarships





Vocational Training Teams

DISTRICT GRANTS

- Small-scale, short-term
- Local or international activities
- Aligned with the Foundation's mission
- Single grant awarded annually





Community Assessments

WHAT IS A COMMUNITY ASSESSMENT?

- Examines strengths, weaknesses, needs, assets
- Helps to identify relevant opportunities for projects

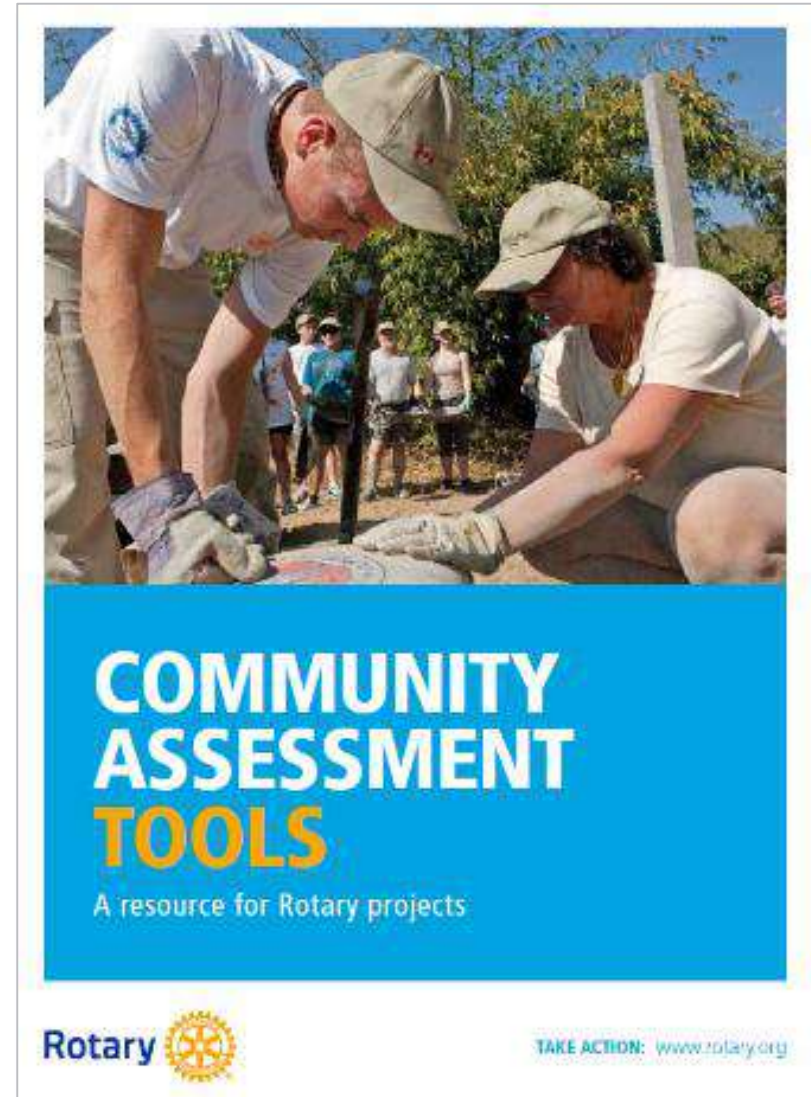


BENEFITS

- Increased understanding of community dynamics
- Helps you make decisions about service priorities
- Builds valuable relationships
- Encourages community member participation
- Helps to build trust, community ownership and sustainability

ASSESSMENT TOOLS

- Community meeting
- Survey
- Interview
- Focus group
- Asset inventory
- Community mapping



TIPS

- Remain open minded
- Choose participants carefully
- Include overlooked or marginalized groups
- Consider yourself an outsider
- Don't promise a project before you make a decision

Updates

UPDATES

- Reminder: community assessments now required for global grants.
- Clubs are encouraged to cooperate with Rotaract clubs as partner organizations for global grants.
- Trustees increased the amount of DDF available to districts for their 2019-20 and 2020-21 district grants.

Resources

RESOURCES



Rotary

Course Catalogs

Learning Center Welcome >

Getting Started With the Learning Center

English ★★★★★

ENROLLED

Rotary Courses - All Languages >

社務の基本知識

ENROLLED

Áreas de Enfoque de Rotary

Portuguese... ★★★★★

ENROLLED

Áreas de Interés de Rotary

Spanish ★★★★★

ENROLLED

Area d'intervento del Rotary

Italian ★★★★★

ENROLL

Axes stratégiques du Rotary

French

ENROLLED

Basiswissen Foundation

German

ENROLL

Rotary **My Rotary** [Rotary.org](#) [Club Finder](#) [JOIN](#) [GIVE](#)

[Exchange Ideas](#) [Take Action](#) [Learning & Reference](#) [Manage](#) [The Rotary Foundation](#) [News & Media](#) [Member Center](#)

[Home](#) | [The Rotary Foundation](#) | [Apply for Grants](#) | [Global grants](#)

Global grants

Global grants support large international activities with sustainable, measurable outcomes in Rotary's areas of focus. By working together to respond to real community needs, clubs and districts strengthen their global partnerships.

Read A Guide to Global Grants for detailed information on planning your project, applying for a grant to fund it, carrying it out, and reporting on your progress and outcome.

What global grants support

Global grants can fund:

- Humanitarian projects
- Scholarships for graduate-level academic studies
- Vocational training teams, which are groups of professionals who travel abroad either to teach local professionals about their field or to learn more about it themselves

How they're funded

The minimum budget for a global grant project is \$30,000. The Foundation's World Fund provides a minimum of \$15,000 and maximum of \$200,000. Clubs and districts contribute District Designated Funds (DDF) and/or cash contributions that the World Fund matches. DDF is matched 100 percent and cash is matched at 50 percent.

What do you want to do?

I want to...

[f](#) [t](#) [in](#) [e](#) [r](#)

Featured Story

A wave of compassion

Kerstin Jeska-Thonwart came to Sri Lanka for a peaceful vacation. She left with a purpose.

[More >](#)

Rotary Courses - All Languages >

社務の基本知識

ENROLLED

Áreas de Enfoque de Rotary

Portuguese... ★★★★★

ENROLLED

Áreas de Interés de Rotary

Spanish ★★★★★

ENROLLED

Area d'intervento del Rotary

Italian ★★★★★

ENROLL

Axes stratégiques du Rotary

French

ENROLLED

Basiswissen Foundation

German

ENROLL

RESOURCES FOR FINDING PARTNERS

- Rotary Ideas
- Rotary discussion groups
- Rotarian Action Groups
- Intercountry committees
- Project Fairs
- Rotary Fellowships





Questions?