



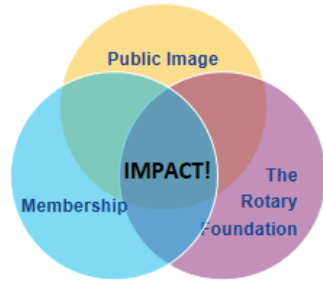
# THE ROTARY FOUNDATION

Rotary  
District 9510





M + PI + TRF = IMPACT!



POLIO

Rotary  
District 9510



CREDIBILITY



PEACE BUILDING

Rotary  
District 9510



HOW YOU CAN CONTRIBUTE

Rotary  
District 9510



GRANTS

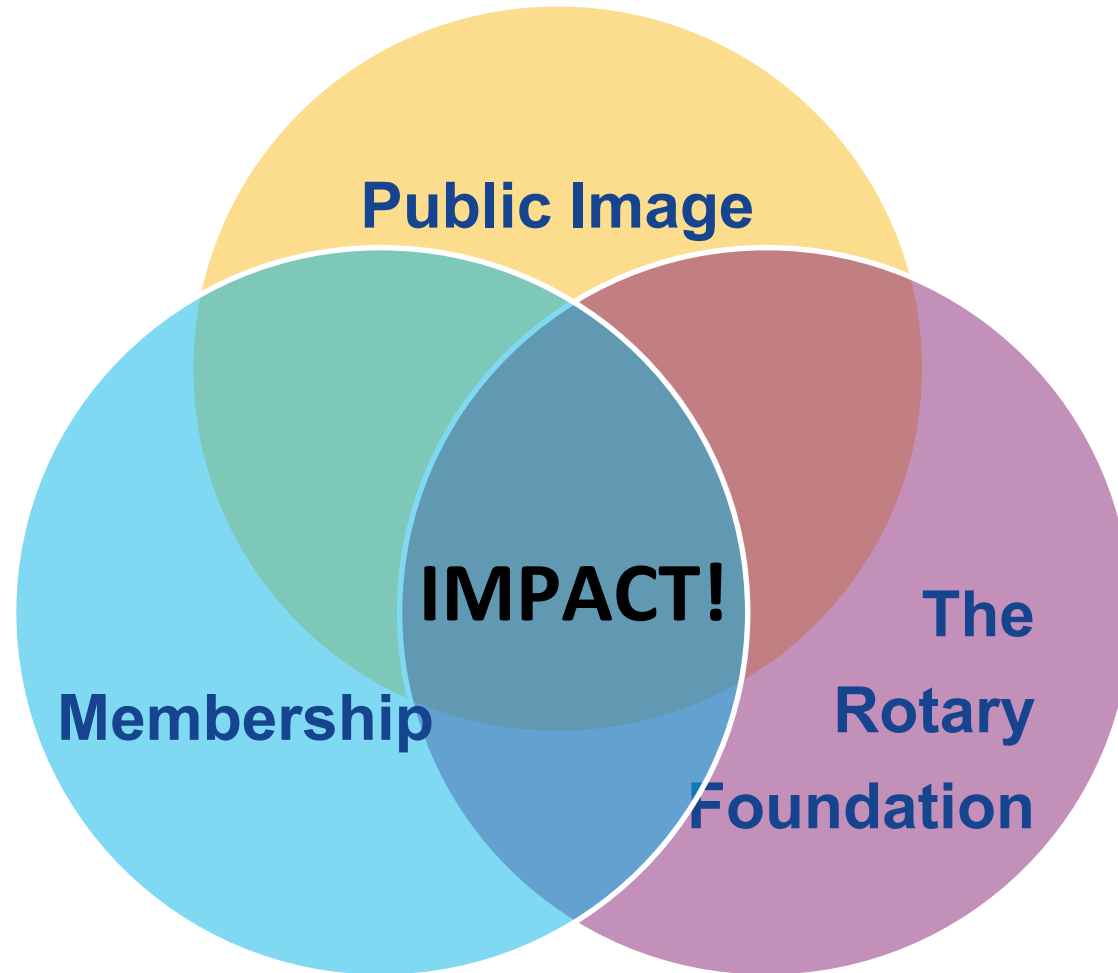
Rotary  
District 9510



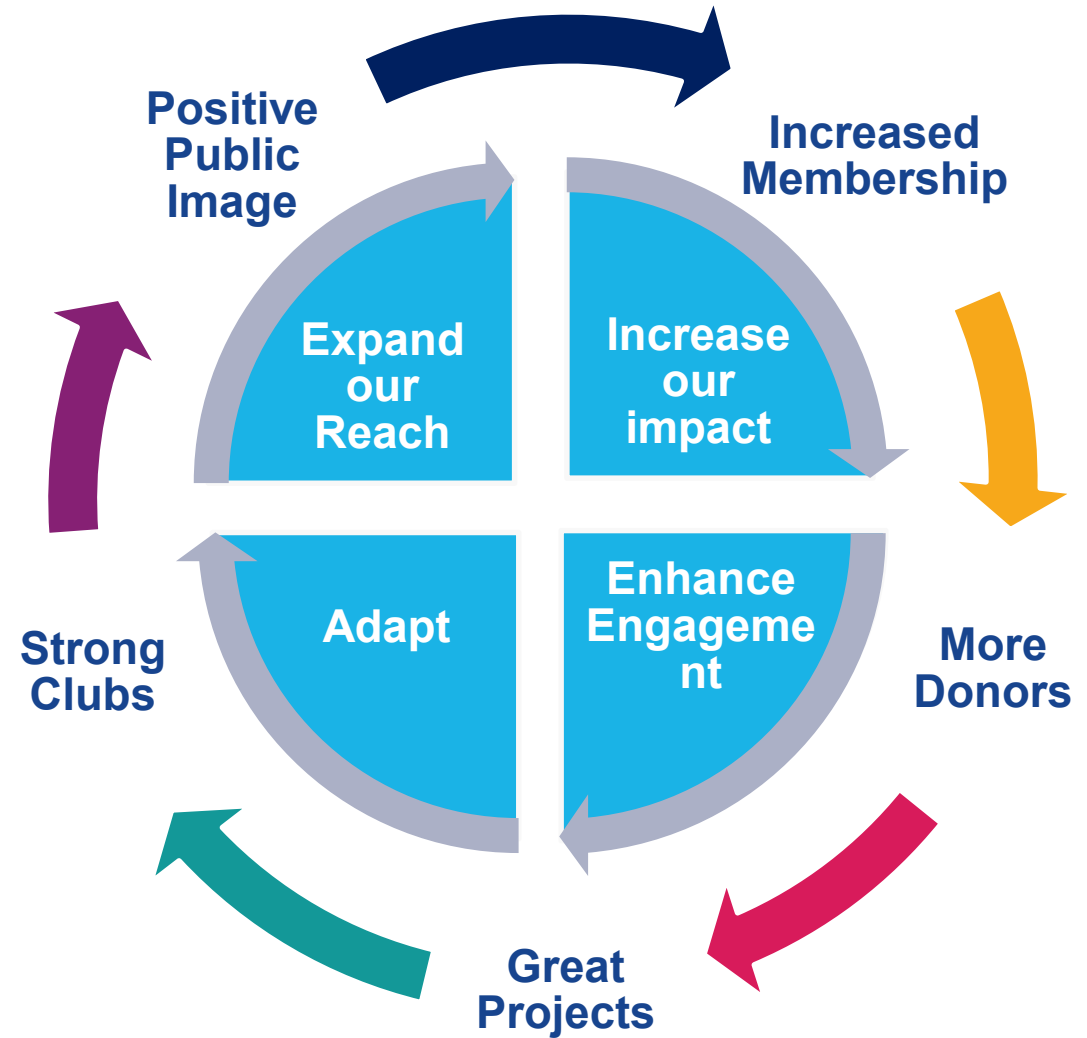




# M + PI + TRF = IMPACT!



# Membership, Public Image, & The Rotary Foundation support Rotary's Action Plan Priorities



To help Rotary members to advance world understanding, goodwill, and peace by improving health, providing quality education, improving the environment, and alleviating poverty









TOGETHER, WE

# END POLIO

Rotary  PEOPLE OF ACTION

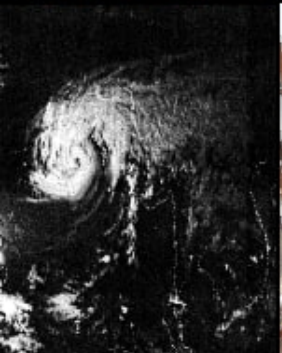
# POLIO

Rotary   
District 9510



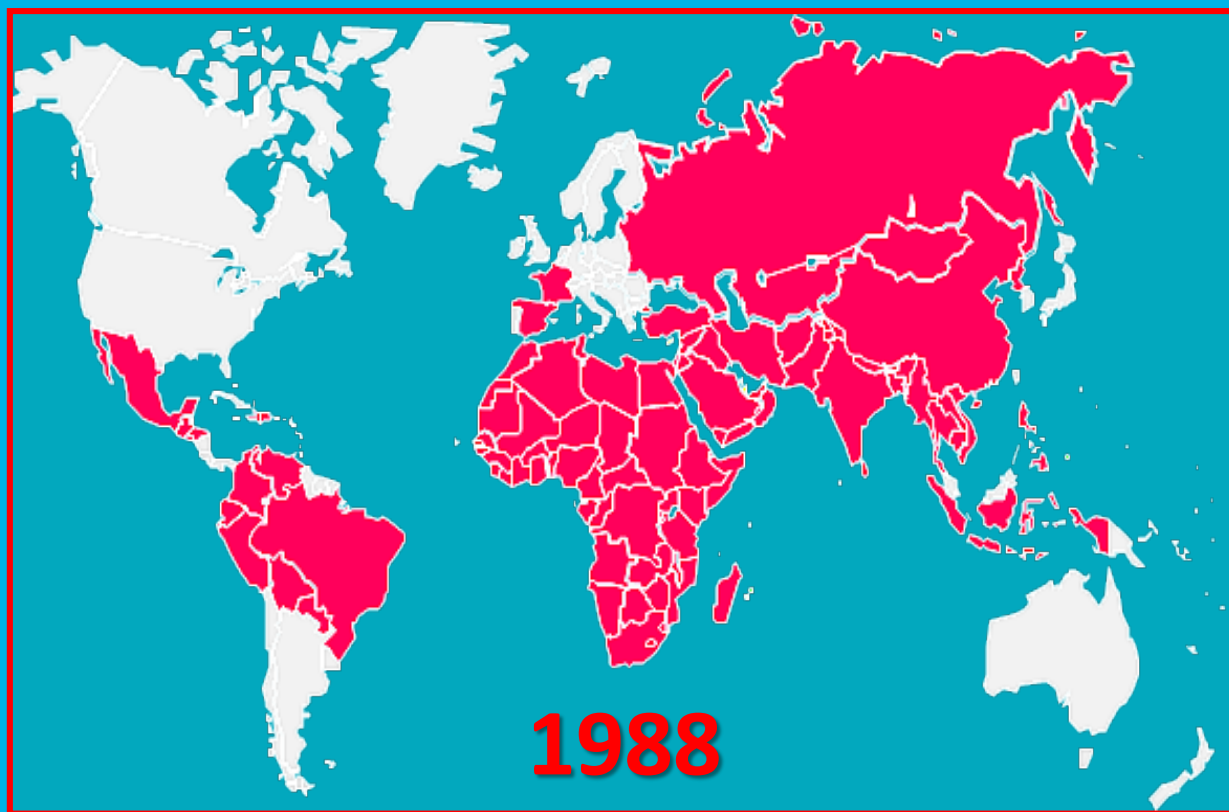


1979

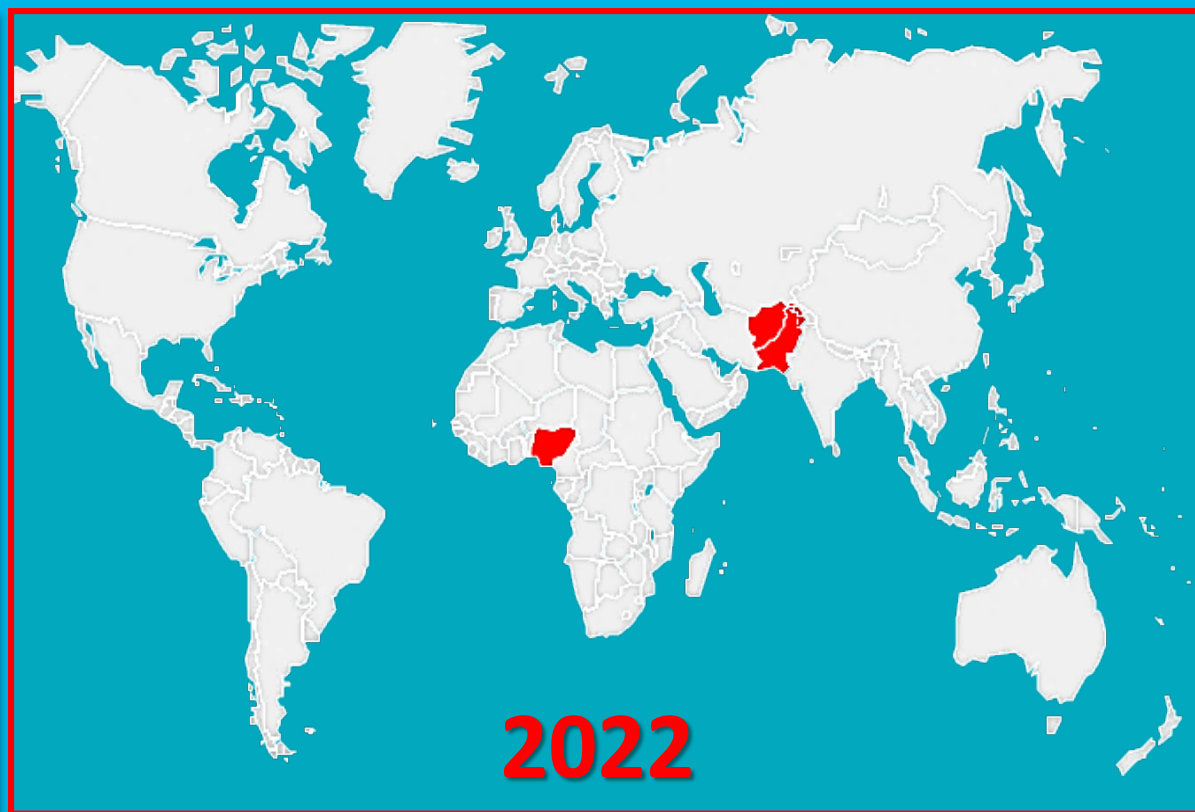




# COMPARISON 1988 VS 2022

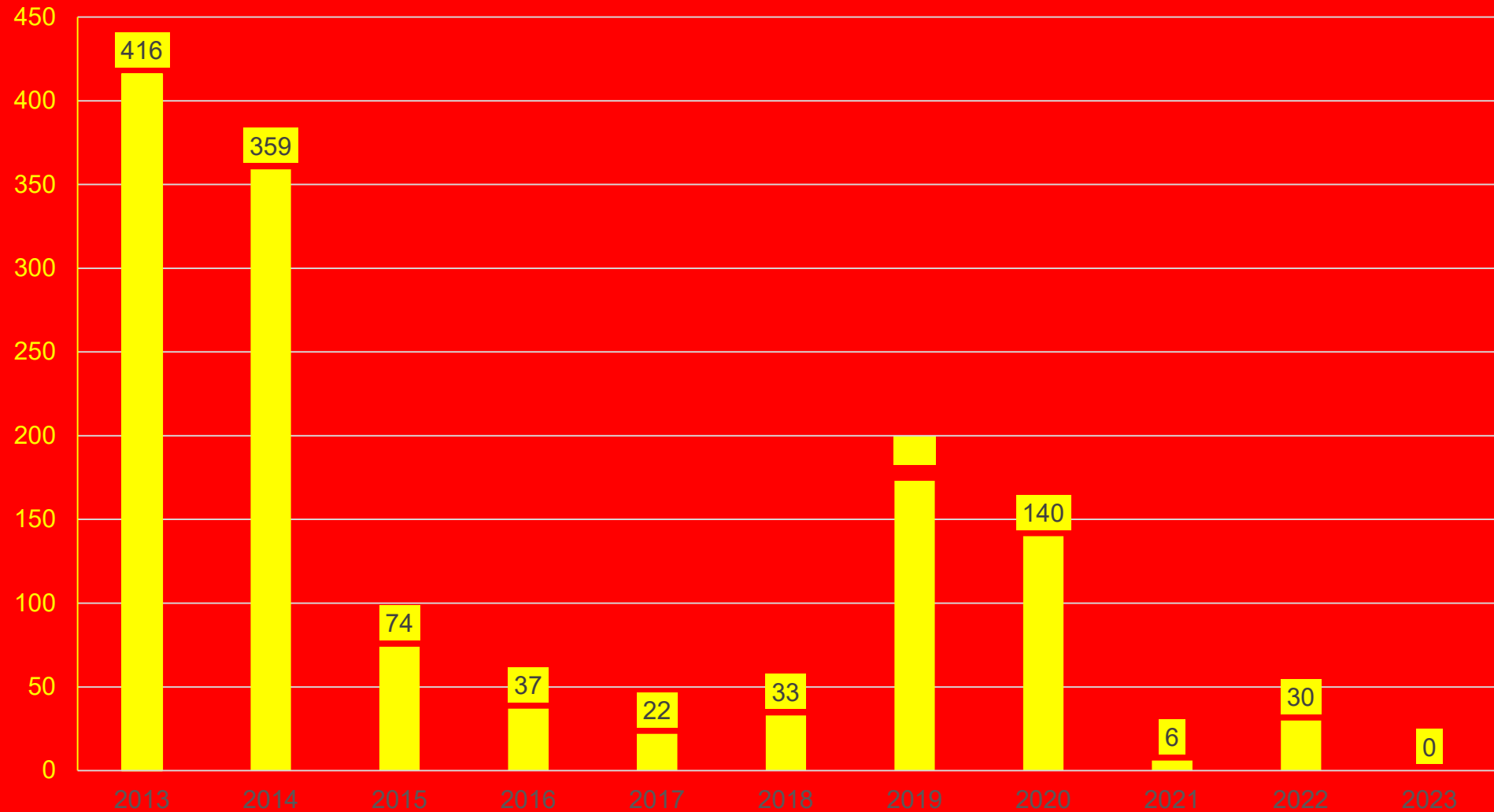


**350,000 WPV cases**



**30 WPV cases**

# POLIO CASES 2013-2023





# Circulating Vaccine Derived Polio Virus

Polio subtype	2023	2022	2022	2021	2020	2019	2018
Type 1	Madagascar x 5	DR Congo 117, Mozambique 21, Madagascar 14, Malawi 4,	157	16	35	12	27
Type 2	Indonesia x 3 Chad x 2 Israel x 1 Nigeria x 1 Benin x 1 Somalia x 1	Yemen 162, DR Congo 321, Nigeria 48, Chad 44, Niger 15, Benin 11, Mozambique 4, Somalia 5, Central African Republic 5, Ghana 3, Algeria 3, Togo 2, Cameroon 3, Eritrea 1, Ethiopia 1, United States 1, Indonesia 1, Sudan 1.	634	682	1082	366	71
Type 3	0	Israel 1	1	0	0	0	7
<b>TOTAL</b>			<b>716</b>	<b>698</b>	<b>1117</b>	<b>384</b>	<b>105</b>







**CREDIBILITY**



# CHARITY NAVIGATOR

---

Scored 100% making it a 4 star charity

## Accountability and Finance

- Liability to Assets ratio – 10.80% - 10/10 points
- Working Capital Ratio – 2.16 years – 10/10 points
- Fundraising Efficiency - \$0.06 – 10/10 points
- Administrative Expense Ratio – 4.39% - 10/10 points
- Fundraising Expense Ratio – 5.80% - 10/10 points
- Program Expense Ratio – 89.70% - 10/10 points







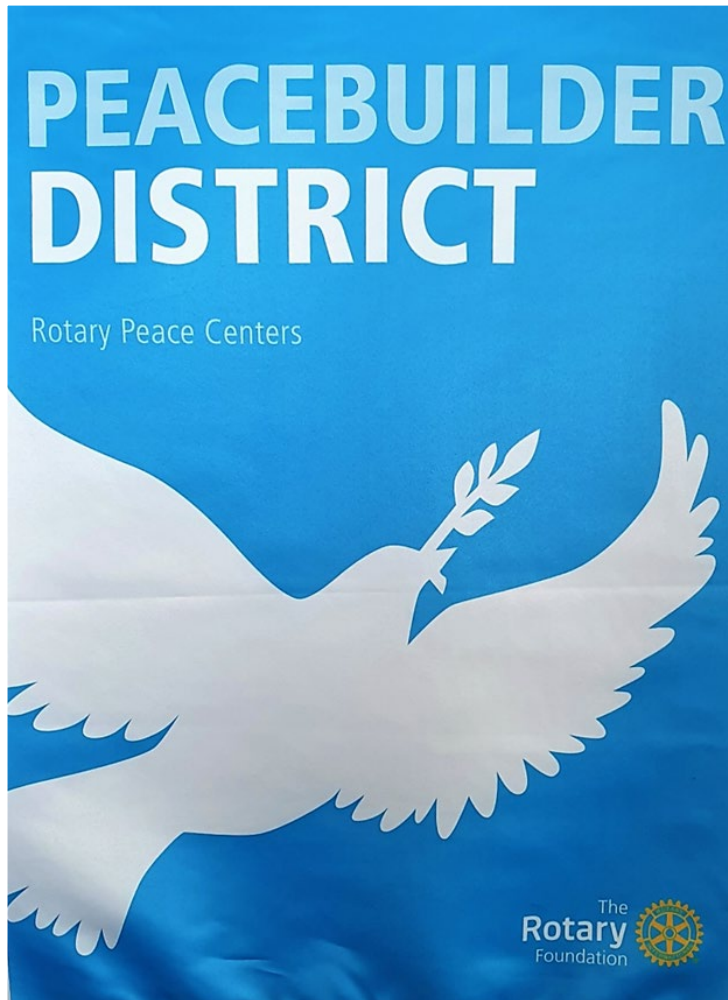
# PEACE BUILDING

Rotary  
District 9510



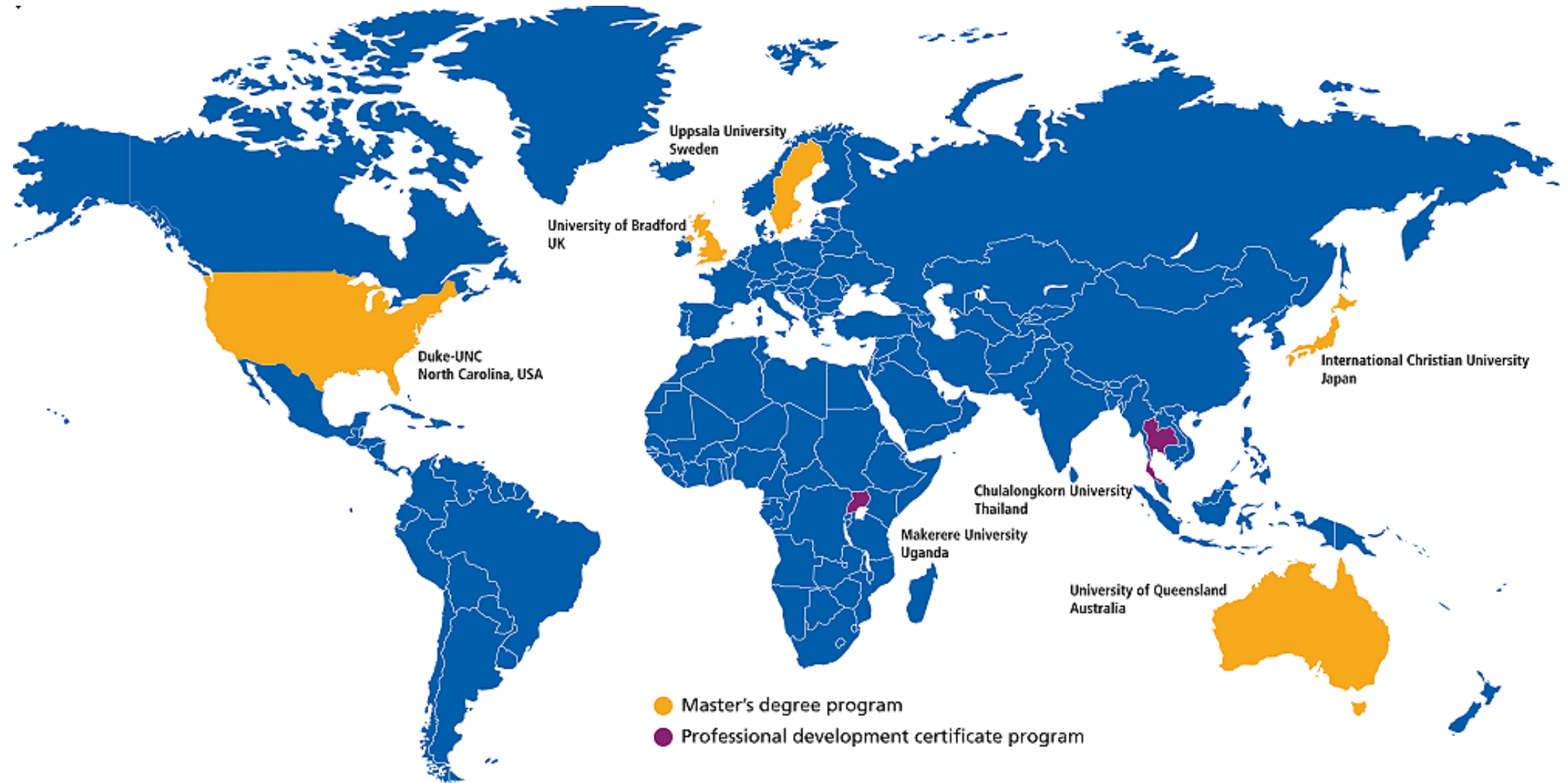


# The value of the Peace Fellow Program



- Peacebuilding is part of Rotary's DNA
- The Rotary Peace Centers program is Rotary's most formidable weapon against war, violence, and intolerance.
- Peace Fellows acquire skills in:
  - Research & conflict analysis
  - Conflict resolution
  - Communication & presentation skills
  - Project planning
  - Leadership
- 93% of Fellows have a job connected to peace and development. Key beneficiaries:
  - Refugee & displaced persons
  - Young people
  - Conflict affected areas
  - Women & children
  - Impoverished communities.

# Rotary Peace Centres





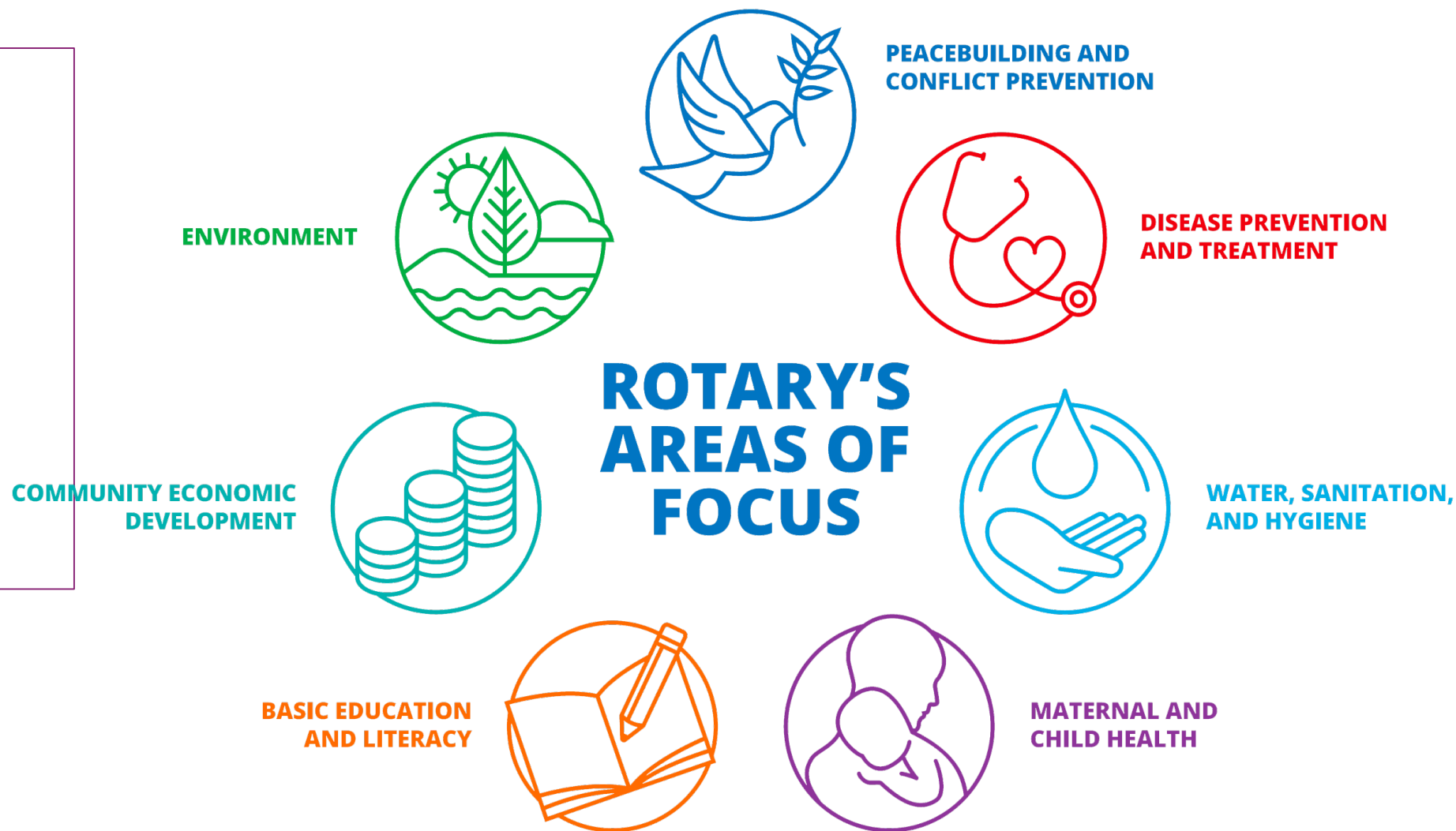




# HOW YOU CAN CONTRIBUTE

# What causes can donors support

- **SHARE**
- **World Fund**
- **Area of Focus**
- **Rotary Peace Centers**
- **Disaster**



# Impact



## Annual Fund

Funding the projects and scholarships of The Rotary Foundation.

Global Goal US\$150m



## Endowment Fund

Funding the World Fund to support the DDF for Global and District Grants as well as projects at the Trustees discretion

Global Goal \$60m cash & \$80m in new bequests



## PolioPlus Fund

Directly funds our highest priority project

Global Goal \$50m



## Disaster Response Fund

Enabling grants of US\$25,000 for rapid disaster recovery



## CSR Grants\*

New Grant with a base value of \$21,000. rigour of a Global Grant, flexibility of a District Grant



# Personal Giving

- Centurion
- Paul Harris Fellow
- Paul Harris Society
- Major Donor
- Tax deductibility



# Club Giving

## **FOUNDATION SUGGESTION**

25% to the Annual Fund

15% to PolioPlus

10% to the Endowment Fund

50% Local Community Projects

I would be happy if every club contributed half the recommended amount above to the Foundation.



**CLUBS WHICH  
CONTRIBUTED TO  
THE ANNUAL FUND  
IN 2021-22**

---



**86%**







TOGETHER, WE

SAVE LIVES

Rotary  PEOPLE OF ACTION

GRANTS

Rotary   
District 9510

## District Grants

- Smaller amounts
- Distributed once per year
- Club has to have completed Foundation training
- You can use district grants to fund a variety of activities, including:
  - Humanitarian projects, including service travel and disaster recovery efforts
  - Scholarships for any level, length of time, location, or area of study
  - Vocational training of any team size or timespan.
- It is generally matched on a 1:1 basis.

## Global Grants

- Be an international partnership between a Rotary club or district in the country where the activity takes place and a Rotary club or district outside of that country
- Be sustainable and include plans for long-term success after the global grant funds have been spent
- Include measurable goals that are demonstrated through progress reports
- Align with one of our six areas of focus
- Respond to real community needs
- Include active participation from both Rotarians and community members
- Have a minimum budget of US\$30,000
- Matching is available through District Designated Funds and the World Fund.

**CLUBS WHICH  
RECEIVED A  
DISTRICT GRANT**

---

**17%**







How does Rotary work? Some can do a little and others can do a lot.

When everyone does something, great things happen.

Robyn T. Braley



# COMMITTEE MEMBERS

---

- Chair – Damian Leach –  
RC Morialta
- Grants Chair – Jeanette Rich –  
RC Encounter Bay
- Peace Scholarships Chair – PDG Jerry Casburn –  
RC Unley
- Fundraising Chair – PDG Wendy Gaborit –  
RC St Peters
- Stewardship Chair – Kate Davies –  
RC Holdfast Bay
- PolioPlus Chair – Andrew DeGaris –  
RC West Lakes