

Our Regionalisation Pilot



Regionalisation
Pilot

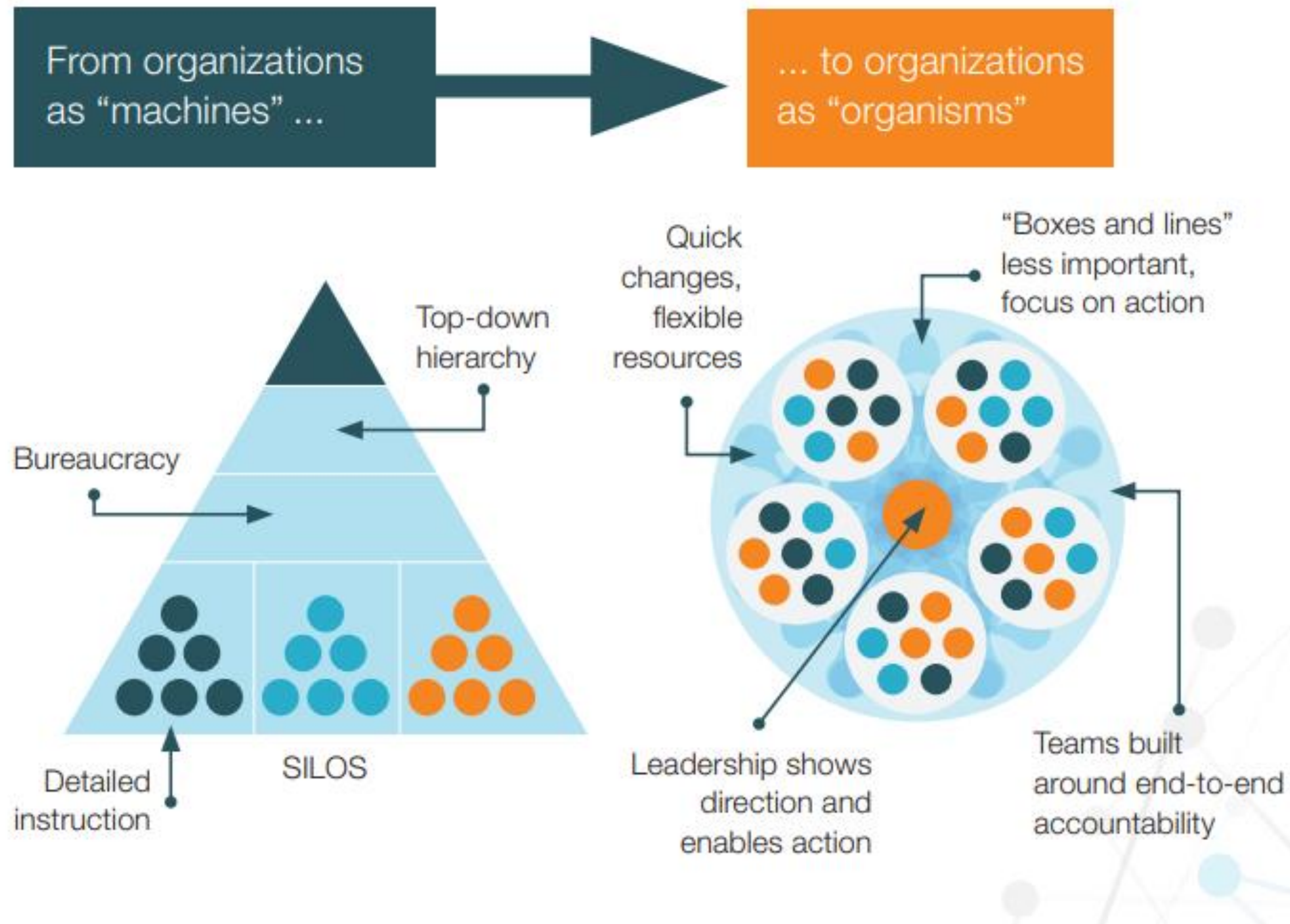
Jyoti, Rotarian since 2016.

Agile Organisation

Exhibit 1

The agile organization is dawning as the new dominant organizational paradigm.

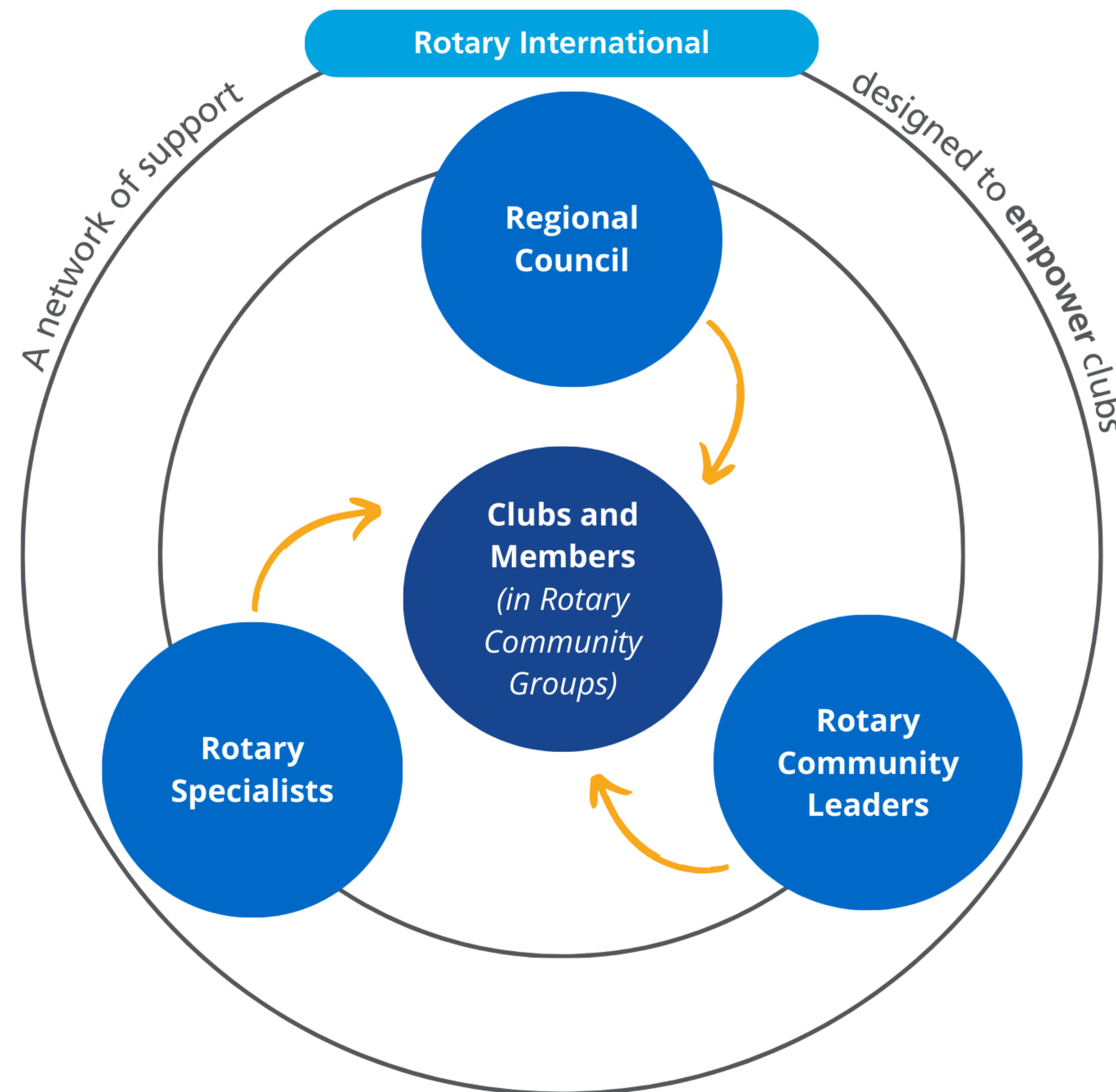
Rather than organization as machine, the agile organization is a living organism.



Pilot operating model - To transform Rotary and Rotaract

From this:

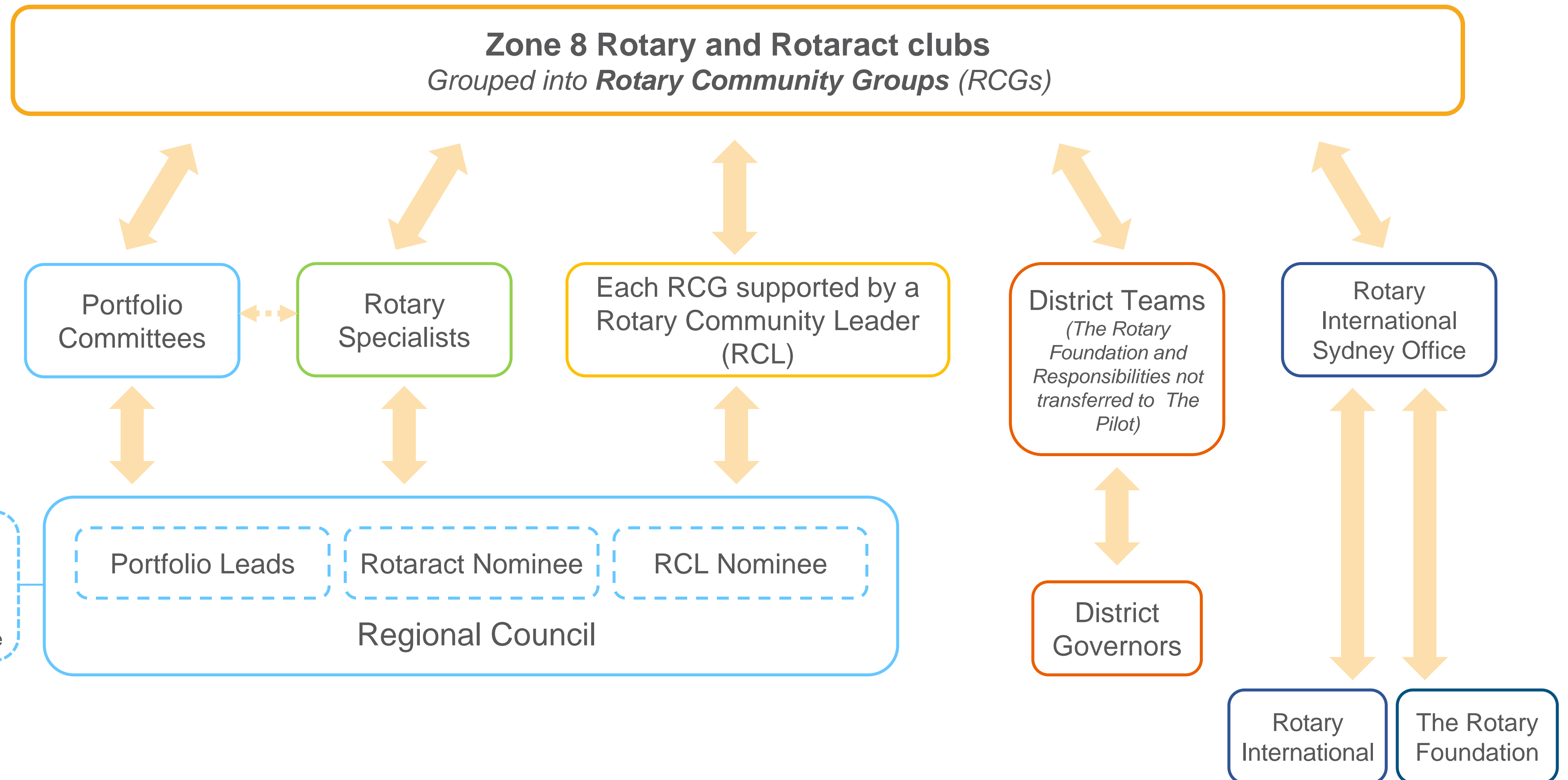
Governing
Supervising
Top Down
Appointed Leaders
Competitive
Rigid Structure
Hierarchical
Cumbersome



To this:

Collaborative
Community
Transparency
Supportive
Leading
Inspiring
Opportunities
Diversity
Efficient
Flexible

Club support network



Key New Roles

Rotary Community Leader



Facilitator, connector, coach.

Facilitates Rotary Community Group to 'upscale' Rotary and develop their clubs to thrive and grow.

Rotary Specialist



Subject matter expert

Works directly with clubs across the Zone to provide guidance in their specific area of expertise.

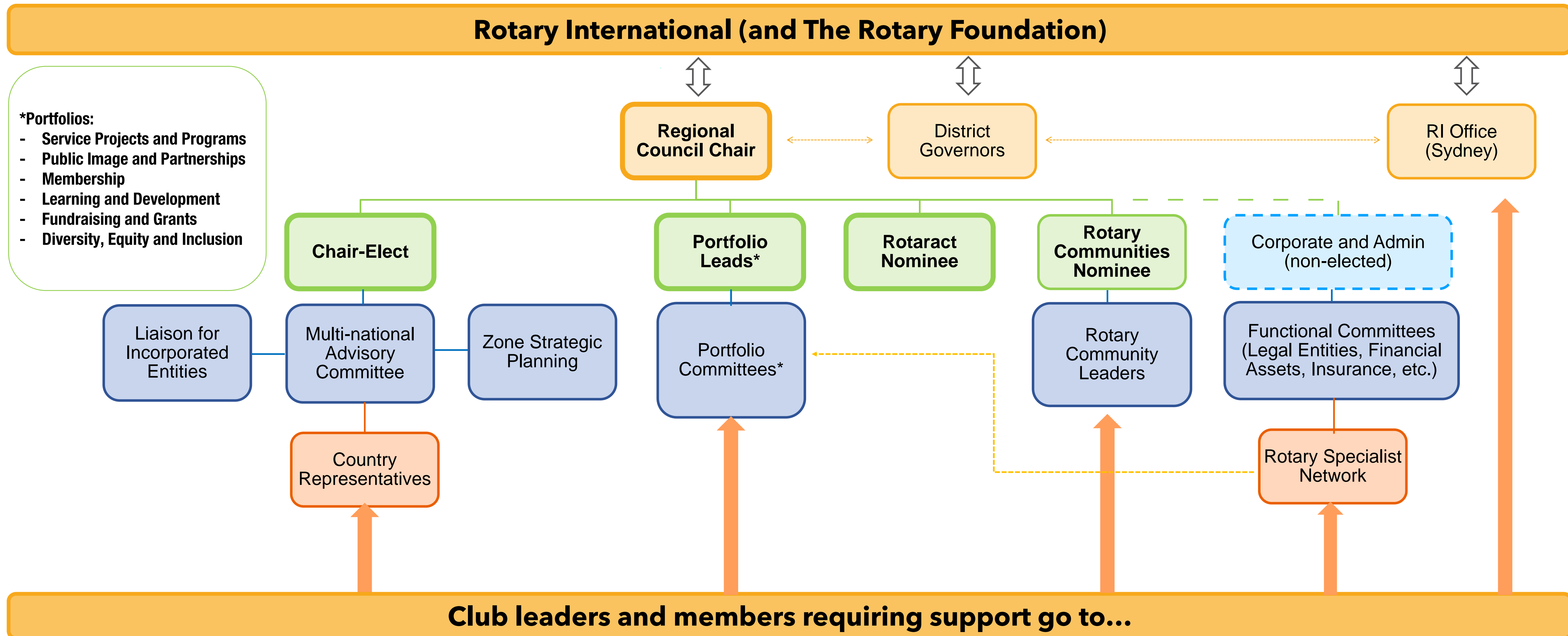
Portfolio Committees



Big picture

Develop **Zone-wide** strategies, working with local teams in many cases. Do not generally assist day-to-day club operations.

Regional Council – Rotary International Zone 8 Regional Council Ltd (ACN 673 493 635)



Regional Council – Rotary International Zone 8 Regional Council Ltd (ACN 673 493 635)



Chair: Dallas Booth

RC of Turramurra, NSW, Australia (D9685)



Chair-Elect: Tony Heyward

RC of Tawa, New Zealand (D9940)

Regional Council – Rotary International Zone 8 Regional Council Ltd (ACN 673 493 635)



Portfolio Lead: Learning and
Development: PDG Euan Miller

RC of Norwood, SA, Australia (D9510)



Rotaract Nominee: Eeshwar
Rajagopalan

Rotaract Club of Subiaco/RC of Elizabeth Quay, WA, Australia
(D9423)



Portfolio Lead: Major Fundraising and
Grants: Dr Peter Rogers AM

RC of Melbourne, VIC, Australia (D9800)

Regional Council – Rotary International Zone 8 Regional Council Ltd (ACN 673 493 635)



Portfolio Lead: Membership: PDG Andy Rajapakse

RC of Burleigh Heads, QLD, Australia (D9640)



Portfolio Lead: Public Image and Partnerships: Neil McWhannell

RC of Wahroonga, NSW, Australia (D9685)



Portfolio Lead: Diversity, Equity and Inclusion: Edith Chaney

Rotary Club of Manukau City Sunrise (D9920)

Regional Council – Rotary International Zone 8 Regional Council Ltd (ACN 673 493 635)



Portfolio Lead: Service Projects and
Programs: Madhumita Bishnu

E-Club of Melbourne, VIC, Australia (D9800)



**Rotary Communities Leader
Nominee**



Corporate and Administration Lead:
Alan Eyes

RC of Pukekohe, New Zealand (D9920)

Rotary Community Group 1

Adelaide

Adelaide Central

Adelaide Light

Adelaide Parks

Prospect

Regency Park

Kent Town

Port Adelaide

Mawson Lakes

West Torrens

Walkerville

Lightsview

Adelaide City Rotaract

Adelaide University Rotaract

Thebarton Senior College Rotaract

Rotary Community Group 2

Alice Springs

Alice Springs-Mbantua

Clare

Maitland

Northern Yorke Peninsula

Peterborough

Port Augusta

Port Lincoln

Port Pirie

Roxby District

Stuart-Alice Springs

Whyalla

Whyalla Norrie

Rotary Community Group 3

Blackwood

Burnside

Campbelltown

Eastwood

Edwardstown

Hyde Park

Magill Sunrise

Mitcham South Australia

Morialta

Norwood

St Peters

Unley

Coromandel Valley

Rotary Community Group 4

Largs Bay

Charles Sturt Grange

Elizabeth

Henley Beach

Kidman Park

Modbury Golden Grove

Playford

Salisbury (SA)

Tea Tree Gully

West Lakes

Salisbury City Rotaract

Rotary Community Group 5

Glenelg

Holdfast Bay

Somerton Park

Goolwa

Flagstaff Hill

McLaren Vale

Morphett Vale

Seaford

Encounter Bay

Victor Harbor

Yankalilla

Rotary Community Group 6

Berri

Broken Hill

Irymple

Loxton

Mildura - Merbein

Mildura Deakin

Red Cliffs

Renmark

Robinvale, Vic - Euston, NSW

Waikerie

Wentworth

Rotary Community Group 7

Strathalbyn

Onkaparinga

Stirling

Barossa District

Barossa Valley

Tailem Bend

Gawler


Gawler Light

Blakiston Nairne

Mount Barker (South Australia)

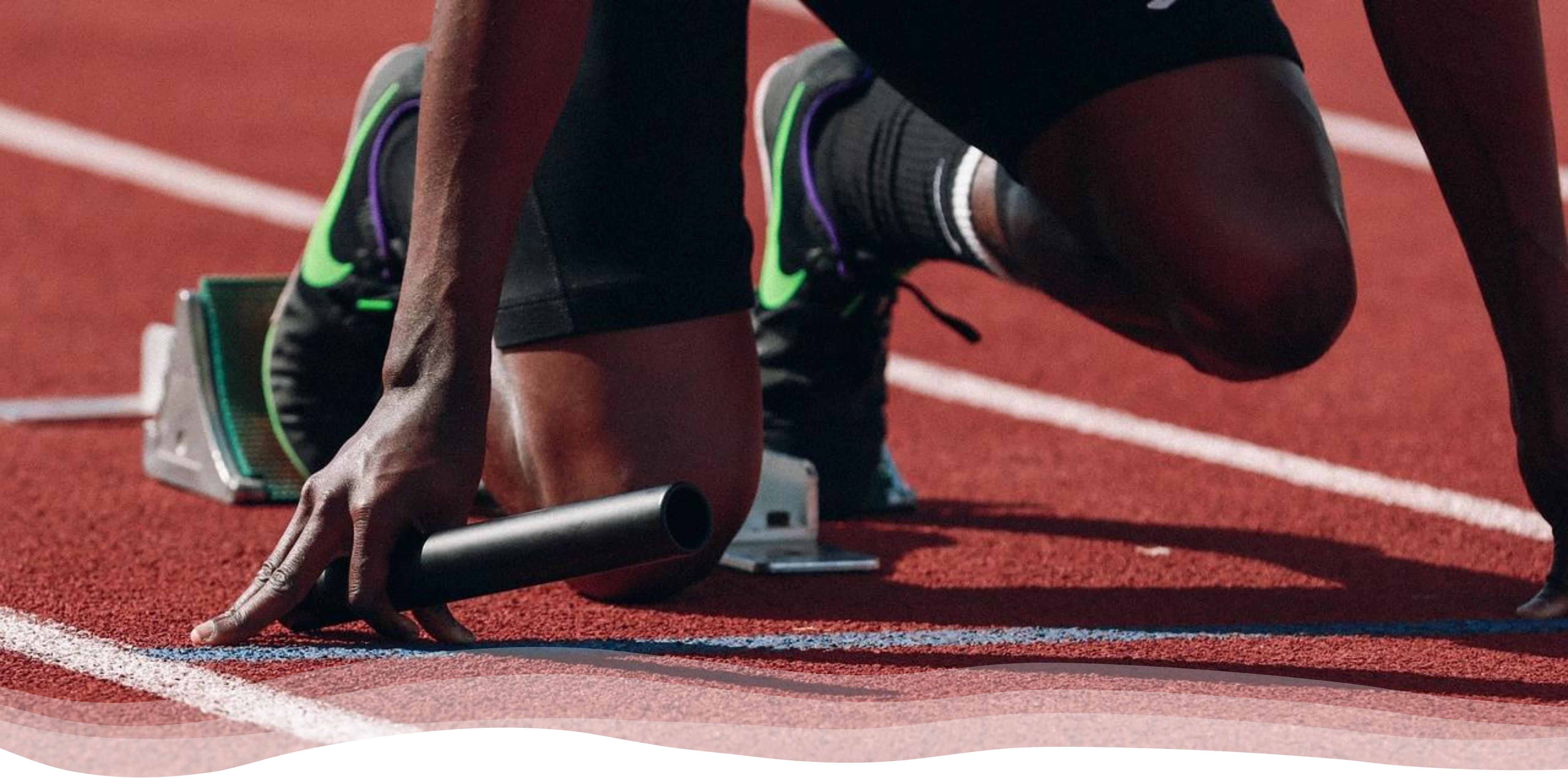
Mobilong

Murray Bridge



**District 9510 Online
Club**

**Rotary Community
Group with other
Online Clubs**



Core
proposition

**Only clubs and members
can make a difference to
the outcomes that Rotary
cares about**

Theory of Change

- The approach to RCG and club development is based in Asset Based Community Development
“build on what’s strong, not what’s wrong”

Cormack Russell

How will RCGs work?

- The RCG and its clubs will pull strategies, tools, resources and support towards them if and when they see something for themselves
- The model doesn't push strategies, tools, resources and support to clubs – we know that doesn't work
- It doesn't try and make clubs change or even persuade them
- The model believes in clubs and members

How will
RCGs work?



The RCG and the clubs in the
group will have a lot of support

What is the role of the Rotary Community Leader (RCL)?

- Facilitator and partner in growth
- Connector for support they need
- Coach

What is the role of the Rotary Community Leader (RCL)?

- They will facilitate the leadership group of the RCG
- Club leaders will be their closest relationships – **building their capacity to lead and build relationships in their own clubs**
- Other, purpose-driven, engagements may be arranged – eg with members of a sub-group of clubs working on a development issue etc
- RCLs won't schedule quarterly club visits

What is the role of the Rotary Community Leader (RCL)?

- RCLs won't report to, or be directed by, District Governors – although this is a key relationship (RCLs and G-Trains will agree protocols for their relationship)
- RCLs won't assess clubs, determine what they need or should do, or chase them up on compliance matters
- Clubs will determine their own growth needs through the RCG process
- Other support needs met as required
- Nothing in this process undermines the autonomy of clubs

Yes, but
how?

- The RCG's first meeting with their RCL will be ideally face-to-face (July-Aug 2024)
- The RCL L&D program will prepare them for this meeting
- The first RCG meeting will be a half day/day workshop
 - **structured agenda and templates**
 - **strategies, tools and resources**
 - **have fun and get to know each other**

Growth Plan methodology, tools and resources

- Each workshop will follow the same simple process...
- ...but will produce a unique Growth Plan

Six-step process to develop a RCG Growth Plan:



