

YOUTH PROGRAMS

Youth – A long-standing Rotary Focus

In 1949, the Rotary International Board adopted the slogan “Every Rotarian an Example to Youth” as an expression of commitment to children and youth in each community in which Rotary Clubs exist.

Serving young people has long been an important part of the Rotary program.

MOTOR CARS FOR BOYS

11.Jan 1928

Fine Response by Rotary Club

Efforts by the Rotary Club of Adelaide have resulted in arrangements being made by the Young Australia League for the transportation of 112 boys of the 335 arriving here on Thursday. They will be taken to the Adelaide hills on Monday by motor car, leaving the Jubilee Oval at 2 o'clock in the afternoon.

ROTARY REVIEW

For some time now Rotary clubs from the metropolitan areas of Adelaide have maintained contact with various people in South East Asia by providing assistance to students in those areas to enable them to continue their studies to the secondary education level.

11.Nov 1964

COMBAT VANDALISM

Rotary Club at Adelaide

ADELAIDE, Sunday.

To combat the vandalism which seems to be increasing in Adelaide, the Rotary Club plans an extensive drive, with the object of convincing irresponsible youths and adults of the futility of wilful damage. The club will ask University students to set an example to the younger generation.

11.May 1931

Youth – Opportunities for District 9510 clubs

- **Cooperation with “Young Rotary Clubs”: Rotaract / Interact**
- Sponsorship of Programs for young people
 - Rotary Youth Sailing Challenge
 - National Youth Science Forum
 - RYLA & RYPEN
 - Health of the River Forum
 - Rotary Youth Exchange
- Club Projects
 - Dream cricket



PLEASE BRING YOUR DONATIONS
(ENSURING IT IS UNWRAPPED) TO
CLUB MEETING AT TWELVE25
YOUTH CENTRE ON

18
DEC
2024
6:30 PM

SEEKING DONATIONS SANTA NEEDS HELP

WE ARE SEEKING DONATIONS OF NEW PRESENTS (OR CASH DONATIONS) TO BE DONATED TO LOCAL ORGANISATIONS, E.G. NORTHERN DOMESTIC VIOLENCE SERVICE AND BACKPACKS FOR KIDS SA . AIDING KIDS GOING THROUGH HARD TIMES THIS CHRISTMAS, BY SPREADING A LITTLE BIT OF JOY.
IF YOU CANNOT MAKE THE ABOVE TIME, PLEASE CONTACT SYLVIA ON 0403 436 764 TO ARRANGE AN ALTERNATIVE TIME.



Rotaract
District 9510



Youth – Opportunities for Rotary clubs

- Cooperation with “Young Rotary Clubs”: Rotaract / Interact
- **Sponsorship of Programs for young people**
 - Rotary Youth Sailing Challenge
 - National Youth Science Forum
 - RYLA & RYPEN
 - Health of the River Forum
 - Rotary Youth Exchange
- Club Projects
 - Dream cricket

Rotary Youth Sailing



Rotary Youth Sailing

- One & All sailing tall ship
 - Voyages from Port Adelaide
 - 5-day voyages
 - April & October
 - Young people 15-18
-
- Trainees become part of the crew, joining one of the three watches tasked with keeping the ship operational 24 hours a day.



Rotary Youth Sailing

- The most common and preferable option is for a club to fully sponsor a student at the subsidized club price of ~\$1200.
- It is possible to combine sponsorships with other Rotary clubs. The Rotary Youth Sailing Committee is willing to assist coordination.
- Clubs can select their own participants (aged 15-18). The Committee is able to help with the sourcing and selection of participants.





National Youth
Science Forum

- 9-Day Science Program
- Year 12 students
- Program costs ~3000\$
- Club involvement through sponsoring attendance



Youth – Opportunities for District 9510 clubs

- Cooperation with “Young Rotary Clubs”: Rotaract / Interact
- Sponsorship of Programs for young people
 - Rotary Youth Sailing Challenge
 - National Youth Science Forum
 - **RYLA & RYPEN**
 - Health of the River Forum
 - Rotary Youth Exchange
- Club Projects
 - Dream cricket



RYLA and RYPEN

With Helen Marshall
Chair, RYLA/RYPEN Committee (9510)

District Assembly 2025

Rotary Youth Leadership Awards

A transformative seven-day residential program that equips young adults (19-26) with leadership, teamwork, and communication skills through dynamic workshops and hands-on experiences.

When: 20th - 26th of September 2025

Where: Nunyara Conference Centre, Belair SA

Application Deadline: 15th of August 2025

Cost: \$1150 per participant



Rotary Youth Program of ENrichment



A three-day residential program designed for young people aged 14 to 17, focusing on personal development, leadership, and communication through interactive workshops and team-building activities.

When: 29th – 31st of August 2025

Where: Nunyara Conference Centre, Belair SA

Application Deadline: 18th of July 2025

Cost: \$425 per participant



Questions?

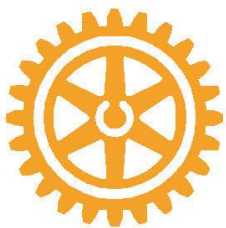
Please feel free to contact me
with any questions.

The email for both programs is:
ryla@rotary9510.org



Rotary

District 9510



Rotary Youth
Leadership
Award

Rotary

District 9510



Rotary Youth
Program of
Enrichment

Youth – Opportunities for District 9510 clubs

- Cooperation with “Young Rotary Clubs”: Rotaract / Interact
- Sponsorship of Programs for young people
 - Rotary Youth Sailing Challenge
 - National Youth Science Forum
 - RYLA & RYPEN
 - **Health of the River Forum**
 - Rotary Youth Exchange
- Club Projects
 - Dream cricket



HEALTH OF THE RIVER YOUTH PROGRAM

September 2025

HEALTH OF THE RIVER



Health Of
The River



***CURIOUS ABOUT THE NATURAL WORLD ?
INTERESTED IN ECOLOGY AND THE ENVIRONMENT?
WANT TO HELP PROTECT THE ENVIRONMENT?***

- ***THIS 5 DAY FORUM FOR STUDENTS PROVIDES HANDS ON LEARNING AND MENTORING FROM SPECIALIST ECOLOGISTS AND RESEARCHERS ON A WORKING CONSERVATION AND RESEARCH PROPERTY, WITH AN EMPHASIS ON "RIVER HEALTH"***
- ***ACTIVITIES WILL INCLUDE A FOCUS ON SUSTAINABLE WATER MANAGEMENT AND IRRIGATION PRACTICES, SALINITY ISSUES AND ENVIRONMENTAL FLOWS, CONSERVATION, LAND DEGRADATION AND REHABILITATION AND MORE.***
- ***FORUM ATTENDEES ARE SUPPORTED BY ROTARY CLUBS. THE FORUM PROVIDES TRANSPORT, ACCOMMODATION, MEALS AND EXCEPTIONAL LEARNING EXPERIENCES.***

HEALTH OF THE RIVER



Health Of
The River



MONDAY 15TH – FRIDAY 19TH SEPTEMBER, 2025

CALPERUM STATION, RENMARK

OPEN TO YEAR 9 AND 10 STUDENTS



[HTTPS://ROTARY9510.ORG/SITEPAGE/YOUTH/HEALTH-OF-THE-RIVER-FORUM](https://rotary9510.org/sitepage/youth/health-of-the-river-forum)

ROTARY CLUBS ARE OFFERED THE OPPORTUNITY TO SPONSOR STUDENTS

SPONSORSHIP COSTS ~\$700 (EXACT AMOUNT TBD)

ENQUIRIES: REGISTRAR CATHY CAMERON

PH: 0408 951 958 E: HEALTHOFTHERIVER@ROTARY9510.ORG

Youth – Opportunities for District 9510 clubs

- Cooperation with “Young Rotary Clubs”: Rotaract / Interact
- Sponsorship of Programs for young people
 - Rotary Youth Sailing Challenge
 - National Youth Science Forum
 - RYLA & RYPEN
 - Health of the River Forum
 - **Rotary Youth Exchange**
- Club Projects
 - Dream cricket

Youth Exchange



About Youth Exchange

The first seeds for Rotary International's Youth Exchange Program were sown by the Rotary Club of Copenhagen, with a small-scale European program started in 1929.

Exchanges between California and Latin American countries started in 1939. • Activities spread to the Eastern United States in 1958.

It was only in 1972, Rotary International (RI) endorsed the program to clubs worldwide as a “worthwhile international activity”.



Rotary sends out approximately 8,000 students each year.

How has it evolved

Boom days of 70's & 80's sending and hosting up to 40 students a year.....most clubs were involved.



But times have certainly changed with

- Easier **access to overseas** travel
- Students doing other travel – **gap year & school exchanges**
- **Social Media** – world is a smaller place



It is now **strictly** a secondary student exchange so the idea of using the exchange as a **gap year** after **Year 12** is no longer possible.

Some Clubs of the wrong belief they are too old so cannot find host families.



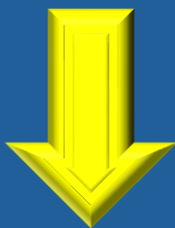
Types of Exchange

Long Term
(12 Months)

Short Term
(3-6 Months)

New
Generations
Service
Exchange
(Vocational)

~~RAISE
(Australia –
New Zealand)~~



FOCUS



Rotary Youth Program Authorities

- **Rotary International** - Only districts who obtain certification with RI may participate in the Rotary Youth Exchange program.
- **NCCISSE** (National Coordinating Committee for International Secondary Student Exchange) mandated guidelines. The NCCISSE guidelines were first established in November 1989.
- **State Regulatory Authority**- Each State and Territory in Australia has a body and legislation for Secondary Exchange Organisations (SEO) and Rotary D9510 needs to be **certified in each state it operates** based on NCCISSE.
- **Rotary's Liability Insurer** AON has certain requirements

NATIONAL GUIDELINES



Northern Territory
Government



Government of Western Australia
Department of Training
and Workforce Development



NSW
GOVERNMENT | Education



Queensland
Government



Government of South Australia
Department for Education and
Child Development



ACT
Government



OFFICE OF TASMANIAN
ASSESSMENT, STANDARDS
& CERTIFICATION



Victorian Registration &
Qualifications Authority

- Rotary D9510 certified every 5 years in SA. Exp 26/6/27

Rotary International

Statement of Conduct for Working With Youth RI 2006

Rotary International strives to create and maintain a safe environment for all youth who participate in Rotary activities.

*To the best of their ability, Rotarians, Rotarians' spouses and partners, and other volunteers must safeguard the children and young people they come in to contact with and protect them from **physical**, **sexual** and **emotional** abuse.*

Volunteer Information and Declaration Form

3 Referees - one referee may be a Rotarian, and none may be family members

Screening Process

Each State and Territory in Australia has a body and legislation that oversees Child Protection and Working with Children's Checks (WWCC) **SA Dept Human Services**

- District YE Committee Members
 - Club Counsellors
- Host Family members >18 :

1. A Working with Children's Check (WWCC) - GOVT
2. A Volunteer Information and Declaration Form - RI

All YE Committee members must also complete:

Responding to Risk of Harm Abuse and Neglect Training -GOVT

BRIEFING REQUIREMENTS

Responsibility of District Youth Exchange Committee to provide adequate training.

- Providing appropriate and detailed manuals
 - Home Family Briefings
 - Outbound Student Briefings
 - Inbound Student Briefings
-
- ☐ **Rules and Responsibilities**
 - ☐ **What to expect**
 - ☐ **Educating Students, Host Families, and Counsellors of our Abuse and Harassment Reporting Guidelines and procedures and processes to keep students safe.**

Rules and Regulations

- 5D Rules :
 - **Drive** motor vehicles,
 - **Drink** alcohol outside Host Family
 - Take **Drugs**.
 - No serious **Dating** relationships.
 - **Decoration** -no Tattoos or Piercings



Breaches of these rules may result in the early termination of a student's exchange.



Any costs due to the student's early return home or any unusual costs incurred by or on behalf of the student are the responsibility of the student's parents.

OUTBOUND STUDENTS

Outbound 2025



Rori Logan -
RC Strathalbyn
Japan



Bella Stacey -
RC Gawler Light
France



Louis Anderson -
RC Glenelg
Japan



Thomas Palmer -
RC Salisbury
Sweden

Who Can Apply ?

1. Should be in **Years 9, 10 or 11** in the year they make application.
2. Students must be **enrolled in secondary education**.
3. **No** student who has completed **Year 12** shall be eligible for this program. Need a Secondary School Student Visa
4. Must be **aged 15 and not have turned 18** at the time of departure.

For planning purposes, this should be taken as **1 January** in the year of departure. Actual departure is mid-January.

Personal Attributes

1. Sound **academic** progress at school and preferably be in the top one third of their year group academically.
2. **Interest** in people and places.
3. Good **general knowledge** of Australia, its history, political system, socio-economic policies, and its involvement in international affairs.
4. Display high standards of **personal conduct** and attitudes which reflect and are widely accepted in the community.
5. **Outgoing personality** and be interested in cultural and/or outdoor pursuits.
6. In most cases, be prepared to learn **another language**.

Rotary Ambassador

Family

Sponsor
Community

Rotary &
District 9510

Successful ambassadors understand what *diplomacy* means:

“the profession, activity, or skill of managing international relations, typically by a country's representatives abroad”

A diplomat is a person who is

- tactful
- skillful in managing sensitive situations
- models and values empathetic understanding of many different perspectives
- **Stop-Listen-Evaluate**

Program Costs - Student

The Student Fee will be approx. **\$8,500 to \$9,000** (subject to Airfare fluctuations) and includes:

- Administration expenses
- Initial Briefing & Training -September
- 2nd Briefing/Training - December
- Return airfares, as arranged by Rotary, to the country of exchange
- Travel Advice
- Visa Fees
- Personal/Travel Insurance through AON = \$1,250
- Manuals including printed & electronic
- Debrief on Return
- Rotary Apparel – Blazer, Polo, Hoodie
- Business Cards



OUTBOUND STUDENT - Cost to Club

- Meals for Student and Family
- Banners - approx 6
- Blazer (optional).
- Other (optional)



Club Obligations - Prior to Departure

Conduct interview - Student Panel and Parent Panel

If successful –

1. Advise the District Youth Exchange Committee who are responsible for making the final selection during interview.
2. **Appoint a Club Counsellor** for the Outbound student.
3. Host the student and his/her parents at **several Rotary meetings**.
4. Provide an opportunity for the outbound student to make a prepared **presentation** to the Club prior to their departure.
5. Ensure the student has a quantity of **Club banners** for presentation in the host country.
6. Provide a level of assistance to and accompany the student to **Briefings** and other weekends prior to departure.
7. Appropriately **farewell** the student upon their departure

Club Obligations - During & After

1. Communicate on a regular basis with the outbound student and their parents whilst on exchange.
2. Provide an opportunity for the student to address the Club upon their return.
3. Provide a level of assistance to and accompany the student to a **compulsory Debrief session**.



Reciprocity

Exchange is accepted instead of payment of tuition fees. Reciprocity within each state/territory is calculated across the entire program run by an SEO over a **two-year period**.

That means the number of Outbound students we send out must be matched by the number of Inbound students over a **two-year period**.

So, the success of the program does depend largely on **how many clubs are willing to host an Inbound Student**.



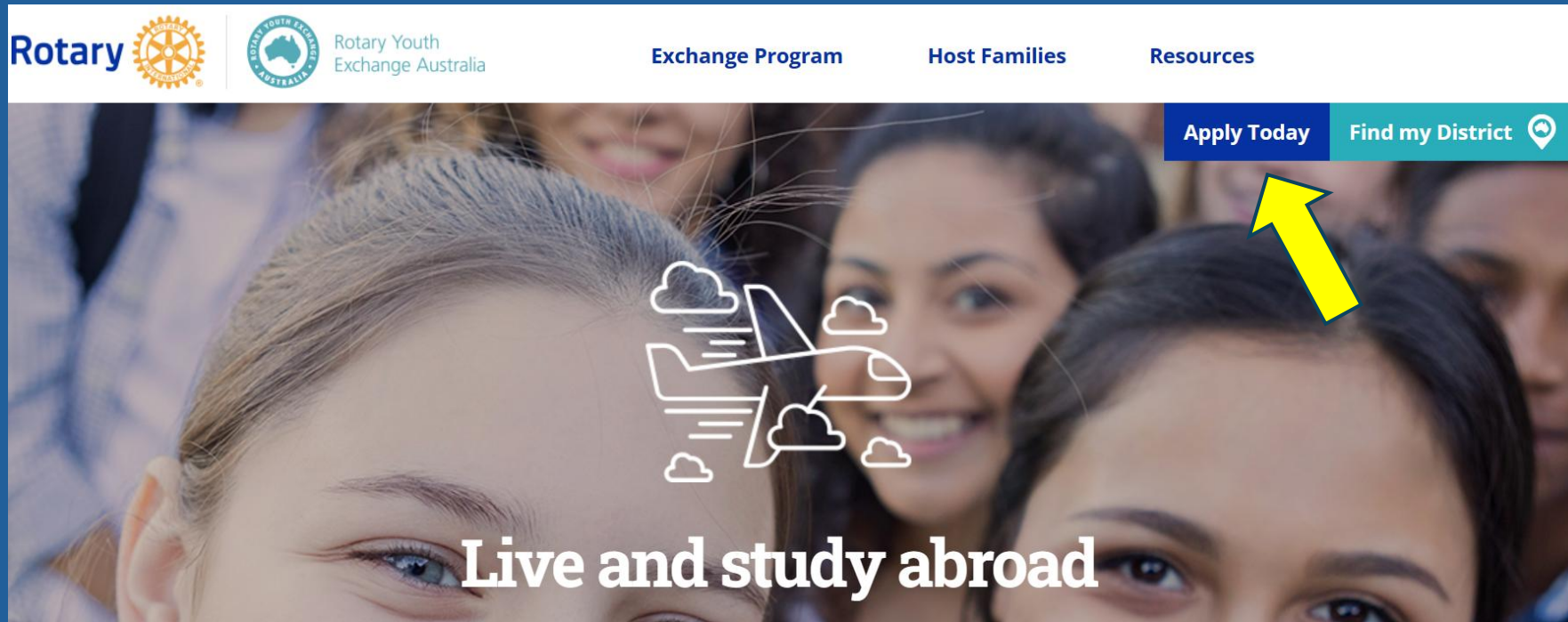
OUTBOUND TIMETABLE

For the 2025 Outbound intake, the timeline is

- **30th April** - Applications close.
- **May** - Find club to interview and sponsor applicant.
- **July** – District Selection process.
- **September** – Compulsory First Briefing and country allocation.
- **December** – Compulsory Final Briefing.
- **January** – Depart.



Applications - RYEA Website



- Over 50 Expressions of Interest since 1st July

9 Applications = 9 Outbound Club Sponsors

INBOUND STUDENTS

Club Responsibilities

- **Youth Exchange Officer** - in charge of all the Youth Exchange activities for your club. The YEO is the person in charge of the club's exchange program and the student's year-long stay here.
- **Counsellor** – The Counsellor is the primary contact between the Rotary Club, Student and Host Families.

Club member is appointed for the duration of the exchange, up to **18 months**. Cannot host and must be of the same sex or alternatively their partner will assist. Or a suitable assistant Club member of the same sex as the student has been appointed.

- **Arrange schooling** at an appropriate secondary school **free** of charge to the student. The Club may have to budget for such things as excursions, uniforms, and books.
- Arrange **travel** to and from school. EG Bus Fares
- Arrange/provide **accommodation** for the student in **Host Families** at no cost to the student.

INBOUND REQUIREMENTS

Overseas students need a **Student 500 visa** issued through Aust Home Affairs Department.

Requirements:

- Evidence of **Overseas Student Health Cover** (OSHC) coverage based on the Australian Medicare system. Purchase online BUPA etc
- **AASES Form** be issued by the Education Standards Board. (Acceptance Advice of Secondary Exchange Student)

In order that an **AASES Form** to be issued I need to submit to them:

- Written **confirmation** that a **School** is prepared to accept the Inbound Student
- **Full Names, Addresses** and **WWCC SRN Number** of every adult in the First **Hosting Family** with dates of hosting.

Cost to Club

- Monthly allowance of at least **AUD\$150** (recommended figure to be paid to the student at the first club meeting each month).
- Cost of hosting Student at meetings
- Basic schooling costs such as uniform, hire of school laptop, books, and travel to/from school



Cost to Student / Parents

- Excursions, Safaris
- Fees for extra subjects and activities
- Additional spending money

SAFARI

2024





Calperum Weekend - October
Inbounds and Future Outbounds


CALPERUM CONNECT
ecology . education . engagement

AUSTRALIAN
LANDSCAPE
TRUST



Schooling Requirements

"It is not a vacation. It is is a year of learning!"

Visa Requirement

Encourage them to:

- Attend regularly, do their schoolwork, participate in school activities.
- Initiate contacts --- join sports teams, clubs, activitiesthat enable them to interact meaningfully with others.
- Speak, speak, speak ... new language

HOST FAMILIES

By far the biggest concern clubs have when they are asked to Host an Inbound Student



- Families **do not** need to be affiliated with Rotary to host.
- Could be or sons, daughters or friends of Rotarians.
- Families in the school community can be **recruited**.
- Parents of Outbound Students are encouraged at to host.
- Some Districts/clubs advise the outbound applicant needs to come up with **two** host families which could include own parents, friends, school family if they want to be considered.



These families should be then be interviewed for suitability – *Would you allow your own son or daughter to live with this family*

Must satisfy all legislative requirements of working with children legislation, personal referees according to Rotary International policy

HOST FAMILIES

What type of families are typical hosts for exchange students?

The answer to this question is **all types**.



How the family is constructed is less important than their motivation to host

Retired couples - more time to spend with their student than younger parents

Families with high school age children are ideal because host brothers and sisters can quickly get the student involved in school and community activities.

Families with small children young children get the experience of having a big brother or sister and the exchange students often enjoy the relaxed atmosphere of practicing their language skills with a younger child.

Personnel Required

Youth Exchange Officer



Student Counsellor



Committed Rotarians



3 to 4 Host Families



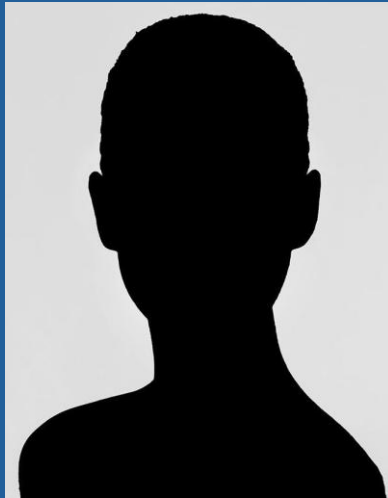
The District 9510 RYE Team

- District Chair: **PDG Paul Thomas AM**
- Treasurer: **PDG David Jones**
- Outbound Coordinator: **Alison Rogers**
- Inbound Coordinator: **Mary-Anne Hannay**
- Support Committee
 - Gary Klippel**
 - Peter Jarvis**
 - Meredith Westbrook**
 - Kathryn Thomas**

Can you make it happen ?

"My youth exchange year was one of incredible change and growth for me. In addition to seeing so much of the rest of the world and making such wonderful friends, I changed in ways I never knew was possible. Thank you Rotary for the best year of my life."

rotary
youth
exchange



Rotary

District 9510



**rotary
youth
exchange**

Youth – Opportunities for District 9510 clubs

- Cooperation with “Young Rotary Clubs”: Rotaract / Interact
- Sponsorship of Programs for young people
 - Rotary Youth Sailing Challenge
 - National Youth Science Forum
 - Rotary Youth Exchange
 - Health of the River Forum
 - RYLA & RYPEN
- Club Projects
 - Dream cricket

DreamCricket

- Cricket program for Special needs children
- Initiated in SA by Rotary Club of Edwardstown
- Passed on to Rotary Club of Adelaide



Thank You !