

February 2024

CONTENTS:

February 2024

Peacebuilding and Conflict Prevention Month

URGENT—HELP NEEDED—[page 2](#)

14 February—Salisbury City Rotaract—Pizza & Learning—[page 3](#)

18 February—Murray Bridge Swap Meet—[page 4](#)

2024 Conference Update—[page 5-6](#)

Wanted—RAWCS Regional Secretary—[page 7](#)

Rotary Youth Program Dates—[page 8](#)

Rotarians Against Malaria (RAM) - [page 9](#)

Wanted—RYLA Committee Chair—[pages 10-11](#)

Foundation Moment—[page 12](#)

Youth Exchange Update—[pages 13](#)

RAWCS Flood Appeal—[page 14](#)



March 2024

Water, Sanitation, and Hygiene Month

3 March—Campbelltown Classics on the Park—[page 15](#)

6 March—International Womens Day-Women in Rotary—[page 16](#)

23 March—Coromandel Valley GIANT Plant Sale—[page 17](#)

Coming Up

Rotary Action Group—Addiction Prevention—[pages 18-19](#)

Protection Informaton—[page 20](#)

Wanted—Steel Chairs—[page 20](#)

Rotarians Against Malaria—RAM—[Page 21](#)

Shelter Bag Info—[page 22-23](#)

Grants Available From Sanderson Trust—[page 24](#)

18 April—Murray Bridge Ambrose Golf Tournament—[page 25-26](#)

14-19 April—AGFR— Busselton— [page 27](#)

20-24 April—Youth Sailing Challenge—[page 28](#)

20 April—19 May—Murray Bridge Rotary Art Show—[page 29](#)

Send your classified to secretary23-24@rotary9510.org by 7th of the Month



Urgent need for Volunteers – visitors from India

Rotary Friendship Exchange (RFE) from Tamil Nadu – India to South Australia 8 – 18 March 2024

As a reciprocal invitation, District 9510 has invited a group of **8 persons from District 3000 (Tamil Nadu – South East India) to visit South Australia from 8 March to 18 March 2024**. The visitors from India will be attending our D9510 Conference in Loxton 15-17 March.

To manage this visit we are seeking **interested Rotarians** to act as **Host families** for part of this visit.

If you have a spare bedroom (or two) please consider Hosting one or two visitors from India during this visit.

During each day the Visitors will be sightseeing and visiting club meetings in Adelaide.

This will be managed by the Organising Committee and a team of Transport Guides.

We are also in desperate need of more **Volunteer Transport Guides**. A daily roster is being prepared.

If you or your club would like to be involved, as a **Host family** or a **Volunteer Transport Guide** we would be very pleased to hear from you.

Please contact us: RFE India inbound Group Leader Ashok Manaharan (RC Mawson Lakes)

ashok_mano@hotmail.com Mobile 0415 491 504 Or Tim Mee (RC Morialta) timm@bizgroup.net.au Mobile 0418 814 856

Tim Mee

International Service Chair

District 9510

Rotary Club of Morialta

Email: timm@bizgroup.net.au

Mob: +61 0418 814 856



PLEASE HELP!

The Rotary Club of Murray Bridge wishes to hear from any Club which had been involved in a Literacy or Numeracy program involving Primary School aged children.

Please contact Lyn Sickerdick
lynsickerdick@gmail.com

Salisbury City
Rotaract



PIZZA + LEARNING

A FREE community evening presented by Salisbury City Rotaract Club aimed at upskilling and providing information to young people and the wider community about topics that impact the vulnerable and disadvantaged, empowering individual and collective action.

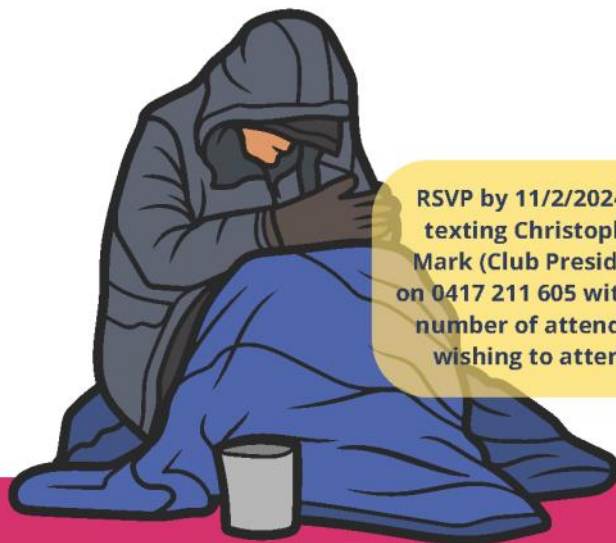
UNDERSTANDING HOMELESSNESS IN OUR COMMUNITY

WHEN: 14 February 2024, 6:30 for 6:45pm
WHERE: Twelve25 Youth Centre

All are welcome to attend, for a FREE informative session and a light pizza dinner.

Please bring an item or two of non-perishable food items for donations to St. Vincent De Paul.

Facebook Event: <https://fb.me/e/3X813xDEE>



RSVP by 11/2/2024 by texting Christopher Mark (Club President) on 0417 211 605 with the number of attendees wishing to attend.

PRESENTER

DR CHRIS HORSELL



Dr Chris Horsell currently works at the School of Psychology, Social Work and Social Policy, University of South Australia. Dr. Horsell does research in Social Theory, Quantitative Social Research and Qualitative Social Research. Their most recent publication is 'A politics of compassion: Informing a new social policy for homelessness?'. Prior to this, Dr. Horsell worked for many years within the homelessness sector.

FIND US    

We Need YOUR Help

Rotary District 9510 needs your Club's help to post in YOUR Social Media to promote our Rotary Says NO to Domestic Violence Walk for Respect.

We are hoping that the graphic attached (and below) and the suggested wording (below) will help make it very easy for you to put the post up, to encourage not only your own members to walk, but the wider public following your Club.

Rotary
District 9510

says **NO** to
DOMESTIC VIOLENCE

Saturday 25 Nov
1.2km from Victoria Square to
Pioneer Women's Memorial Garden
(opposite the Festival Theatre)

register now
to be a
part of our
Walk for Respect

9am meet
10am walk

www.StopCoerciveControl.au

Find out more about the Walk here : <https://stopcoercivecontrol.au/>

SWAP MEET

ROTARY CLUB OF MURRAY BRIDGE

18th February
Murray Bridge Showgrounds
Old Princes Hwy
Murray Bridge East

Gates open 6am

Adults \$7
School Children Free

Enquiries to John
0428132889

Murray Bridge
Rotary Club

2024 DISTRICT CONFERENCE LOXTON

Rotary
District 9510

CREATE HOPE
in the WORLD

February 2024

Where are we now? - 33 days until the start of the 2024 Rotary District 9510 Conference!! There is still time to Register for this event.

Whilst bookings for the Gala Dinner and Welcome Cocktail Party are closed, there are still some great opportunities available. The Foundation Breakfast at the Loxton Hotel has seats available. - Guest Speaker is Rotary Foundation Scholar - Ms Annika Theodoulou. In addition, there are also a number of places still available for the "Gourmet Burgers" Lunch at the Loxton Club.

Sunrise Breakfast on Sunday 17th will be relocated due to unforeseen and unavoidable circumstances. This new venue will be overlooking the magnificent Murray River, below the main street in town. The new venue is a truly beautiful venue, with spectacular views. "*Sunrise Breakfast beside the River*". Whilst the programme for the morning will not be changed, the new location enables us to increase the numbers. *If you would like to enjoy a sunrise experience in a beautiful setting – join us & book!*

Registration rates:

The "late payment" rate is \$250.00 pp.

There will not be a 1day payment option.

[Click To Register](#)

Rotary Showcase: What a wonderful response we have had to the Showcase bookings, so many interesting stands will be on show. There are still a number of powered and non-powered display places are still available, so get you applications in. All clubs are encouraged to take this opportunity to showcase their special projects/programs.

No new registrations will be received after 10th March.

Registration for Showcase can be done on line via the link <https://2024loxtan.au/> Neil Schlein is the Showcase coordinator and can be contacted on **0428 841 331**. **Displays:** Each Club to ensure they have representation on their stands to answer questions provide information as required. **Clubs are asked to bring along your own pins and Blu tack.** **Setup:** Clubs are asked to have their displays **set up by Friday evening at 6.00pm**. If a later time is required this can be negotiated by contacting Neil. **NO SETTING UP** on Saturday. **All Electrical equipment to display current "Test and Tag"**

RDU Merchandise: – Members of the Rotary Club of Renmark will be overseeing this display. It will be located in the Showcase area. Merchandise can be purchased on site.

Flags & Banners: Please could Clubs to bring along at least one Flag(s)/Banner(s) for display in the Venue. These can be "pull up" or free standing. They will be displayed inside the venue on either side of the stage. It is a great opportunity to highlight the Clubs in the District, and will make a great display at the front of the Venue.

RIVERLAND
GOOD TIMES FLOW

Inspire Hope
&
Celebrate
100
YEARS

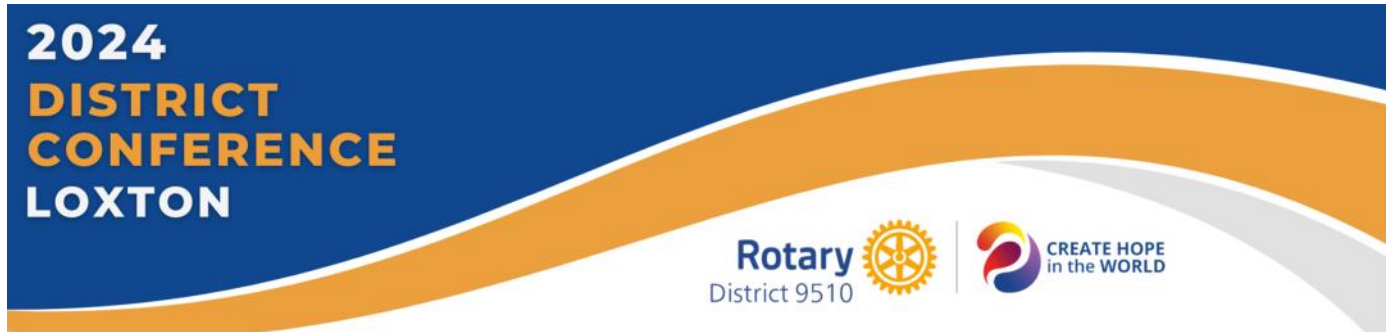
0438 850 536
loxtan@rotaryclub.org.au
PO Box 135, Loxton, 5333 SA

Rotary
District 9510

CREATE HOPE
in the WORLD



PRESS TO RETURN
TO FRONT PAGE



Continued From Previous Page

In Memoriam: This is an important aspect of the Conference. It is a time for honoring and reflection, for the Rotarians who have been called to higher Service during the 2022-23 Rotary year. Presidents are asked to liaise with Robin Le Gallez with regard to the information required. **Robin will need the information by the middle of February 2024.**

Audio/Visual requirements: For those requiring A/V support for their presentations. There are very specific criteria required. The Presentations must be in Microsoft PowerPoint; no external links accepted; and any associated video or audio must be embedded. Please contact Robin to clarify detail. He requires the information no later than 14 days prior to the Event (no later than 1 March 2024) Email robinlegallez@gmail.com

Speaker Aides: If anyone is interesting in assisting with this simple role, please contact me as soon as possible

Major Raffle: There will be a major raffle during the Conference- valued at \$1750.00 with a variety of prizes. Please support this. Funds raised will be evenly shared between the Rotary Foundation; ShelterBox and Kiki's Legacy Project.

Regards

Jenny Mills: Chair 2024 Rotary District Conference.





RAWCS Central Region Secretary

RAWCS Central Region is seeking expressions of interest from Rotarians who would be interested in filling this role.

The committee meets by Zoom bimonthly.

Duties include

- Preparation of and distribution of agenda.

- Recording and preparing minute.

- Collation and distribution of Reports.

- Handling Correspondence.

- Assisting central region Coordinator.

Occasional interstate travel may be required.

Further information may be obtained from
Central Region Coordinator PDG Tim Klar

Coord.central@rawcs.org.au

M 0418840301





ROTARY YOUTH PROGRAM DATES 2024

YOUTH SAILING CHALLENGE

APRIL SAILING DATES

Sat 20th April to Wed 24th April

STUDENT & CLUB APPLICATIONS:

by Wed 20th March:

CLUB EXPRESSIONS OF INTEREST:

by Tues 20th Feb

FULL COST: \$1200 (parents may make a contribution)

SEPTEMBER SAIL DATES: Sun 29th Sept to Thursday 3rd Oct

RYLA -Rotary Youth Leadership Award

PROGRAM DATES: Sat 21st Sept - Fri 27th Sept

APPLICATIONS CLOSE: Sat 31st August

COST TO CLUBS: \$1150 (\$1100 for subsequent applicants sponsored by the same club)

VENUE: Nunyara Conference Centre, Belair

RYPEN -Rotary Youth Program of Enrichment

There will be **no** RYPEN Sunraysia

Adelaide Metro RYPEN

PROGRAM DATES Fri 1st - 3rd November

APPLICATIONS CLOSE: Monday 21st Oct

COST TO CLUBS: \$440 (\$415 for subsequent applicants sponsored by the same club)

Applicants complete online application & pay \$30. This is fully refundable if student withdraws application by 21st October

VENUE: Nunyara Conference Centre, Belair

RYPEN Host Club contributes \$1200 (previously \$1,000)

NYSF -Nationa Youth Science Forum

Dates & costs to be advised for Jan 2025





Rotarians Against
Malaria

Call for Expressions of Interest

ROTARIANS AGAINST MALARIA (RAM)

The RAM regional coordinator may appoint a committee of interested Rotarians to support the promotion of RAM in the district. Ideally, each area of the district will have an area coordinator.

The role of the area coordinator will be

- Raising awareness within Rotary, Rotaract and the general public of the benefits gained through the control and elimination of malaria in epidemic countries

- Assist in raising funds and support for RAM national programmes.

- Encouraging Rotary volunteers, travelling abroad, to seek advice on avoiding malaria.

- Contribute to RAM strategic planning and development.

- Identify Rotary projects within the district that could contribute to Ram's objectives and seek RAM endorsement, assistance and coordination for such projects.

- Seek support from the District Governor for RAM initiatives that may involve Rotary Foundation global grants

Activities may include

- Assistance in holding RAM displays at district functions

- Promoting World Malaria Day.

- Organising RAM functions with clubs in the district to raise funds.

- Liaison with the DG and RAM supervisor.

- Attending the annual RAM conference.

- Visit clubs as a guest speaker.

Training and resources will be made available for Rotarians who wish to join the District RAM team.

Details and more information can be obtained from

District RAM chair Ram.central@rawcs.org.au m 0427393602

Or

Central Region Coordinator coord.central@rawcs.org.au m 0418840301





EXPRESSION OF INTEREST

ROTARY YOUTH LEADERSHIP AWARDS (RYLA) COMMITTEE CHAIR 2024-25

We are seeking expressions of interest for a Rotaractor or Rotarian to lead the RYLA committee for the upcoming Rotary year commencing 1 July 2024

The key outcomes of the committee are successful delivery of RYLA programme(s) on behalf of clubs in our District.
A full position description is available.

If you have the passion to lead this important programme, please contact Stephany Martin M: +61 410 153 048 or E: stephanymartinrcc@gmail.com



Rotary Youth Leadership Awards (RYLA) is an intensive leadership experience hosted and organised by Rotary Clubs and districts across Australia, New Zealand and the world.

Expression of Interest Close 1 March 2024

See next page for job description



PRESS TO RETURN
TO FRONT PAGE

From Previous Page

POSITION - CHAIR: RYLA COMMITTEE

Initially reports to Service Programmes and Projects Board Member, but this will likely change during the year as functions move from District to the Regional Council

Function

The Rotary Youth Leadership Award (RYLA) committee is responsible for delivery of RYLA camp(s) on behalf of the clubs in the district.

Role

Lead the RYLA committee to effectively deliver the function described above by undertaking the tasks listed below.

Tasks

Plan RYLA camp(s) – secure venue, plan programme, appoint facilitators and other personnel to deliver the programme

Ensure the continuity of the programs content and standard.

Oversee the required clearances for all committee and program leadership team members.

Plan selection and training days for program leadership team in conjunction with the RYPEN committee

Work with the committee treasurer to formulate a budget to deliver the programme on a cost neutral basis

Oversee program Registrar to Manage course applications, allocation of sponsor clubs and engagement of applicants.

Promote support of RYLA programme to the clubs in the District and locate annual program sponsor club.

Undertake post programme survey of participants and sponsor clubs to ascertain programme satisfaction

Support RYLA Alumni engagement and events

Objectives

Deliver at least one RYLA programme

Cost neutral

Zero 'no shows'

KPIs (measurements of success)

Less than 10% no show

Over 90% satisfied or better responses from participants and sponsor clubs

At least cost neutral



FOUNDATION MOMENTS

Quick insights into *your* charity — The Rotary Foundation



WHAT IS SHARE?

The SHARE system is how The Rotary Foundation distributes funds to districts. When you contribute to Annual Fund-SHARE, the first 5% is deducted for operational costs. The remainder of the contribution is divided between the World Fund and District Designated Funds (DDF). The Trustees of the Rotary Foundation allocate money from the World Fund, and your district allocates DDF to the programs that people in your area want to support.

The name defines what the system does because contributions are shared throughout the world.



You can help our district and support meaningful projects by giving to the Annual Fund-SHARE!

< Visit my.rotary.org/donate



Rotary D9510 Youth Exchange Update

On January 18th and 20th we farewelled these 8 successful Youth Exchange applicants as they departed our shores to spend the next 12 months overseas in a foreign country learning a foreign language.

They are only able to have this experience through the support of Rotary clubs within our District assisting the students prepare for their experience and with overseas host clubs, prepared to host our students for 12 months.



Maia
Mildura Deakin
Brazil



Abby
West Lakes
Italy



Annabelle
Port Augusta
Germany



Bayley
Port Pirie
Denmark



Charlotte
Morialta
Taiwan



Sari
Adelaide
Sweden



Ettain
Alice Springs Mbantua
Japan



Jazmin
Glenelg
Spain

Applications are now open for a January 2025 departure

Students interested in Youth Exchange departing January 2025 can lodge an Expression of Interest through the RYEA website [Home - Rotary Youth Exchange Australia \(ryea.org.au\)](http://ryea.org.au) Full applications will close **30th April 2024**.

Applicants should be in Years 9, 10 or 11 in the year they make application. Students must be enrolled in secondary education. No student who has completed year 12 shall be eligible for this program.

Students must also be aged 15y 6m and not have turned 18 at the time of departure. For planning purposes, this should be taken as 1 January in the year of departure. Actual departure is mid-January.

If you have any questions please email YouthExchange@Rotary9510.org or contact David Jones 0427 026 887

My youth exchange year was one of incredible change and growth for me. In addition to seeing so much of the rest of the world, and making such wonderful friends, I changed in ways I never knew were possible. Thank you Rotary for the best year of my life! Jenny 16

Can you or your club host an inbound student in 2024-25?

The enthusiastic support of clubs has allowed District 9510 to currently host 7 Inbound Students but 6 will be returning to their home country in July. We are currently being approached by overseas Rotary Districts to host one of their students from **July 2024**.



Can your club assist by hosting an Inbound student. Alternatively, can you personally host an Inbound Student for 3 months to assist another club?



If **Yes**, email YouthExchange@Rotary9510.org or contact David Jones 0427 026 887

For more information on the role and responsibilities of hosting a student click [here](#)



Dear Rotarians

Our country has once again been impacted by extreme flooding and the effect for the residents has been traumatic. To empower Rotary to be on the front foot to combat the relief required, Rotary Australia World Community Service (RAWCS) has established a **Flood Disaster Appeal Fund** to receive donated funds to disperse through the appropriate Rotary Districts and Rotary Clubs in supporting those severely impacted by the floods.

Please see details below: Flood Disaster Appeal Fund - Australia (RARF)

RAWCS has registered a national flood appeal.

Description: To raise funds to support humanitarian relief projects for those impacted by flood disasters within Australia.

The direct link to this RAWCS Project – <https://directory.rawcs.com.au/33-2023-24>

The online donation link is- <https://donations.rawcs.com.au/33-2023-24>



ABC NEWS Posted Sat 7 Jan 2023

Evacuation orders in recent weeks advised people to flee from rural towns across Queensland, New South Wales, Victoria. The Northern Territory, Western Australia and South Australia are yet to determine the full impacts of flooding, which is still posing an ongoing threat to safety.

Australians in the past week have lost access to food and water and access to their towns, and some have even lost their animals and homes.

Heavy rain over some parts of the country has fallen on **already saturated catchments**, "The year was characterised by wetter-than-average conditions across much of eastern Australia," a summary from the Bureau of Meteorology (BOM) said on Friday.

Photograph courtesy of Melody Beutel

Project Name: Flood Disaster Appeal Fund - Australia (RARF)

Project number: 33 2023-24

Description: To raise funds to support humanitarian relief projects for those impacted by flood disasters within Australia.

Tax Deductibility: Rotary Australia Relief Fund (Managed by RAWCS) has Deductible Gift Recipient (DGR) registration and has been listed as a Charitable Fund so we can accept tax deductible donations from individuals or organisations.

Further inquiries:

Merv Williams – National Manager Projects & Volunteers – M. 0439 534 791 /

national.projects@rawcs.org.au

Brad Quilliam - National Projects Supervisor - M. 0488 998 338 / projects.supervisor@rawcs.org.au





CLASSICS on the park



Sunday 3 March 2024
10.00am – 2.00pm

Thorndon Park Reserve, Hamilton Tce, Paradise.
(Food and drinks available for purchase)

CAR ENTRY: All Classic Cars must be registered in advance at \$10 per Car vide TRYBOOKING to enter the Show.

PUBLIC ADMISSION: Gold Coin Donation.

Proceeds to benefit CFS Athelstone, Montacute, Norton Summit/Ashton.



TO BOOK & PURCHASE CAR REGISTRATION TICKETS
VISIT TRYBOOKING.COM OR SCAN QR CODE.



CHECK OUT LAST YEAR'S VIDEO.

Major Sponsor



For more information: E: classicsonthepark@gmail.com P: Sam 0415 695 888 or Jeff 0418 807 040



PRESS TO RETURN
TO FRONT PAGE



**Celebrating
International Women's
Day**

International Women's Day is a global day celebrating the social, economic, cultural and political achievements of women. The 2024 theme is *Inspire Inclusion*.



Women in Rotary
SA Chapter

**Wednesday 6th March 2024
7.00am – 9.00am, Top Room at the Arkaba Hotel**

Jennifer Charles

Adelaide based Couturier - Lover of high fashion, travel and adventure.



Hello! My name is Jennifer Charles, and I am an Adelaide based, utterly obsessed couture seamstress. My work has taken me across the globe. My career and training began in Adelaide, before travelling overseas and swiftly landing a dream job at an Haute Couture fashion house in London. I have since returned to Adelaide and run my own business creating evening and bridal gowns. A couple of career highlights were undoubtedly working on a gown that was worn by Angelina Jolie, as well as the indescribable buzz of travelling to Paris Fashion Week on several occasions. One day I hope to work at Dior in the Paris atelier. I look forward to sharing my story with you all.

Tickets are \$45.00 per person (Plus booking fee) with maximum table groups of 10.

Bookings now open - <https://www.trybooking.com/CLMKD>

Please bring your business cards for a door prize. There will be raffle tickets available for purchase at \$5 per ticket.

The 2024 breakfast is supporting **Treasure Boxes**. Treasure Boxes is a South Australian based not-for-profit children's charity. We provide new and good quality pre-loved items for newborns to 18 year olds, pregnancy essentials, and some items for parents and caregivers.

Raffle prizes donated by:



BJ Designs



Raffle prizes donated by:



**PRESS TO RETURN
TO FRONT PAGE**

Rotary Club of Coromandel Valley

WE ARE BACK

FOR OUR GIANT PLANT SALE

AT THE WAITE STREET RESERVE

BLACKWOOD

SATURDAY 23RD MARCH 8.30 – 1.30



Come and see how to make a Terrarium with Ronda & Jenny



Ample street parking

If you miss this one, don't despair we will see you on the 27th April



AUSTRALIA
RAG AP
Rotary Action Group
for Addiction Prevention



What does RAG AP do?

Forges partnerships between Rotary Clubs and their local communities to:

- tackle the problems of addiction at a local level
- bring expertise together for study & exchange
- shares good practice across the globe

www.rag-ap.org
info@rag-ap.org



Rotary Action Group for Addiction Prevention

Substance abuse and addiction are a global problem.
Structural and continued actions are necessary.

Give our kids the future they deserve!

Communities **working together** are more effective!

- ▶ Local Councils
- ▶ Youth & Sporting Clubs
- ▶ Schools
- ▶ Law Enforcement Practitioners
- ▶ Health Agencies
- ▶ Businesses

RAG-AP is highly **supported by:**

- ▶ Drug Free Australia
- ▶ University of Cambridge
- ▶ UN Office of Drug Control
- ▶ World Federation Against Drugs



Office on Drugs and Crime

The Rotarian Action Group for Addiction Prevention operates in accordance with Rotary International policy, but is not an agency, nor controlled, by Rotary International

IVZW BE0663.669.347



PRESS TO RETURN
TO FRONT PAGE

Cooperation with Countries

RAG AP can help countries translate their national vision and policies into concrete actions by prospecting the support of Rotary clubs and districts in the country concerned.

Cooperation with NGO's

RAG AP cooperates with NGOs whereby the local branches of the NGO are helped to roll out their evidence-based prevention programmes with the support of the local Rotary clubs.

Cooperation with Rotary Clubs and districts

RAG AP informs, motivates and supports Rotary clubs and districts to implement evidence-based prevention programmes in their local communities in cooperation with professional NGOs.

Australian Resources

- ▶ Speakers (including those with lived experiences) telling their stories.
- ▶ Informative books strategically placed in schools and community libraries.
- ▶ saveyourbrain.com.au - a website promoting healthy brains. Plus mentoring for teachers, school counsellors, parents & caregivers, to guide young people in their use of the website.

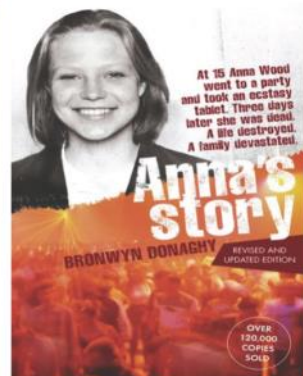


SYB is backed by 'One Choice' research from the Institute of Behavior & Science and its latest findings of the impact drugs and alcohol on the developing brain.

Save Your Brain (SYB) drug prevention education has been inspired by the relentless dedication to saving young lives through school programs, after the death of Anna Wood from taking just ONE ecstasy pill.

We gratefully thank MTAS, Victoria for their generous donation and ongoing support for this important cause.

DRUG FREE



Join us and make a difference!

Contact Rotary Reps: Jo Baxter & Herschel Baker

rag-ap.org admin@drugfree.org.au

The Rotarian Action Group for Addiction Prevention operates in accordance with Rotary International policy, but is not an agency, nor controlled, by Rotary International
IVZW BE0663.669.347



From your District Protection Officer

A Rotarian recently raised the matter of the NDIS Police Check, more correctly the NDIS worker screening check. An NDIS worker screening check takes into account more information about an individual than just their criminal record and permits holders to work with children and with aged and vulnerable. For those who have an NDIS worker check, there is no further need to obtain the WWC check. However, a person can't apply for an NDIS worker check in SA unless they work, or intend to work, in NDIS in South Australia. So then, if you are a Rotarian who has an NDIS workers screening check, you do not need to apply for a WWC check to work with youth in Rotary programs or a Rotary context.

For the technicalities of who needs an NDIS worker's check see <https://www.sa.gov.au/topics/rights-and-law/rights-and-responsibilities/screening-checks/screening-ndis/who-needs-an-ndis-worker-check>. This

If you have any questions or queries about protection policy or matters in our District, please contact Mark Thomas, District Protection Officer, at either mthomas1947@bigpond.com or on 0401671850

Wanted – Steel Mesh Chairs

The Rotary Club of St Peters needs 24 Stackable Steel Mesh Chairs similar to the ones in the photo.



The chairs will be used in the Club Café and resprayed so the only requirement is that the mesh has to be serviceable (no deep rust and no sharp edges). The Club is willing to pay \$10 each.

Contact David on 0434 053 976 or djheilb@outlook.com



ROTARY AUSTRALIA
WORLD COMMUNITY
SERVICEROTARIANS
AGAINST MALARIA

March Against Malaria (MAM) was devised by Rotarian Dai Mason of Rotarians Against Malaria. The march/walk/run/crawl can be conducted at any time this year although March is preferred. Some Clubs might like to conduct the event on April 25th, World Malaria Day or April 30th, Malaria Awareness Day.

The web link is below.

<https://finish-the-fight.org/march-against-malaria-event/>

What is MAM?

March Against Malaria is an opportunity to assist Rotarians Against Malaria (RAM-RAWCS Australia) raise funds for the elimination of Malaria in the South West Pacific. People can walk or run or do a virtual activity. Anyone can take part.

Why do MAM?

Malaria is a serious illness spread by certain anopheles mosquitoes. There were approximately 49 million cases and 608,000 deaths world wide from Malaria in 2022 according to the World Health Organization 2023 Report on Malaria. The number of cases in 2022 increased by five million from the previous year (WHO, 2023). Most deaths occur in disadvantaged young children and pregnant women

Malaria is a serious impediment to social and economic development in the South West Pacific.

How can Rotary Clubs/Community members participate?

People can register with the nearest Club conducting the event. A map of Australia will be populated with details of participating groups. Registration is available at the link below. Clubs wishing to conduct MAM can also register at the link and obtain the Guide plus publicity resources. Donations are accepted through the link as well.

If you have any questions, please contact me.

Kind regards

Kerre,

Kerre Ann Willsher, PhD,

Coordinator,

RAM-RAWCS Australia,

Email- kerre.willsher1@bigpond.com

Phone-0427393602





SHELTERBAGS FOR THE HOMELESS SLEEPING ROUGH



Why Shelterbags?

- Increasing numbers of people, young and old, homeless and sleeping rough
- Winter is obviously worst time of year – bedding becomes wet and unusable
- Waste of donated resources – blankets, sleeping bags
- Growing awareness in community of the homeless and their needs - CEO Sleepout / Sunday Mail Annual Blanket Appeal / Red Shield
- Need for an **immediate solution** that offers shelter from the elements when sleeping rough

What are Shelterbags?



- A lightweight, waterproof, vented swag
- Includes mattress and padded hood
- Easy to carry when rolled up (backpack size and weight)
- Add sleeping bag or other bedding to suit seasonal conditions
- Keeps bedding dry, provides warmth, and some dignity

What is the cost?

- Currently \$85 per bag (includes shipping)
- Import them by the container load – 900 bags – through RC Terrigal

How are they distributed?

- MOU with RC Terrigal in place to supply bags to RC Gawler Light for further distribution to other RCs and organisations as needed
- Next container to be ordered by October 2023 ready for 2024 winter
- RC Gawler Light and partner clubs to purchase around 300 bags for distribution in District 9510



Continued on the next page

Continued from previous page

- RAWCS DGR Account has been established for tax deductible donations – see below for details

Project name: Shelterbags for the Homeless Sleeping Rough in South Australia

Project number: 80-2022-23

Link to Donation page <https://donations.rawcs.com.au/80-2022-23>

(Please note: To trace donations back to local RC, Non Rotary donors to identify local Rotary Club using Request field in donation page)



Scan to open RAWCS donation page

- Rotary Clubs work together with outreach agencies and other community stakeholders in their own Local Government Area to assess individuals' needs, monitor and control distribution
- RC Gawler Light to supply other District 9510 clubs with required bags and either invoice clubs direct or access funds donated via RAWCS DGR account.
- Shelterbags are provided to outreach agencies at no cost.

HOW YOU CAN HELP



Determine need in your area – talk to community outreach organisations such as Salvos, Anglicare, local police etc.



Establish distribution – in partnership with community organisation



Fundraise – through club activities, grants, business donations



Organise with RC Gawler Light for supply of required numbers of shelterbags

Contact person: Richard Tucker 0429 339 879

Email: secretary@gawlerlightrotary.org



Sanderson Educational Trust

This project is managed by Rotary Australia World Community Service Central region.

Rotary clubs are encouraged to apply for funding for projects as per the following guidelines

- 1 The programme goal is to provide funding for educational purposes and associated supplies in developing countries as listed by the Department of Foreign Affairs and Trade
- 2 Funding will be used to facilitate Rotary Australia Overseas Aid Fund projects to assist in educational training
- 3 A maximum grant of \$5000 will be made available from the trust. Clubs are expected to contribute consistent with their size and ability to afford a contribution. A budget must be submitted for consideration that identifies the club's contribution.
- 4 The application must have a RAWCS project number and a partner club or district in the developing country. An MOU with an NGO in the target area where appropriate should be included. Multi-district or multi-country projects will be considered.
- 5 Applicants are encouraged to seek partners in other districts.
- 6 Applicants must demonstrate that the funding will contribute to the sustainability of the project.
- 7 All applications must be a project that fits with one of Rotary International's seven areas of focus.

For further information Contact PDG Tim Klar

Coord.central@rawcs.org.au m 0418840301



Rotary  presents

Club of Murray Bridge

2024 - 2 PERSON AMBROSE COMPETITION



MURRAY BRIDGE GOLF CLUB
THURSDAY, 18th APRIL 2024

PRIZES FOR MEN'S "A", "B" & "C" GRADE & LADIES TEAMS

SHOT GUN START : 8.45 am

PRIZES INCLUDE DRAKES "HOLE IN ONE" COMPETITION TO THE VALUE OF \$500



**PROCEEDS TO
"LIFT THE LID"
ON MENTAL ILLNESS**



ENTRY FEE : \$ 50.00 (non M.B.G.C. members) \$35.00 (M.B.G.C. members)

(BARBEQUE LUNCH PROVIDED BY THE ROTARY CLUB OF MURRAY BRIDGE INCLUDED IN THE ENTRY FEE)

(COMPLIMENTARY TEA/COFFEE BEFORE HIT OFF - EGG & BACON ROLL BREAKFAST - \$5.00)



Proud Sponsors
www.drakes.com.au



The Rural City of
**MURRAY
BRIDGE**



Bridge to Opportunity



REFER TO ENTRY FORM (PRO- SHOP) FOR DETAILS OR PHONE JENNY (0407 239 845) or ROB (0429 678 579) or VISIT <https://www.murraybridgerotary.org.au>



Rotary



Club of Murray Bridge

2024 ANNUAL 2 PERSON AMBROSE COMPETITION

AT THE MURRAY BRIDGE GOLF CLUB

THURSDAY, 18 th. APRIL 2024

SHOT GUN START : 8.45 AM

COMPETITION RULES & CONDITIONS OF PLAY

- 1) Teams to consist of 2 players. Playing groups of 4 will be selected by the Committee. If you share a cart, it must be with your playing partner. **NOTE: Players without a G.A. H/Cp. will be placed in a separate group with a first & second prize.**
- 2) Your team will be allocated a combined handicap (combin. Daily h/cp / 4) & then put into either A, B or C grade. Ladies will have a combined single group. This should give all pairs a fair chance of winning a prize.
- 3) Registration on the day shall be completed by 8.30 am when you will be assigned the hole to start from.
Entry form to be submitted & paid for by 13 th APRIL, 2024. No payments will be accepted on the day of the competition.
- 4) The hole in one prize (11th hole) is available to all golfers who are successful in holing out with their tee shot. If more than one player gets a hole in one, the prize will be equally divided.
- 5) Players may bring their own motorised cart if they wish. (No cart fee will be charged)
- 6) Players G.A. & Daily M.B. Handicap to be finalised on the 15th April 2024 by the Committee.

TEAR OFF HERE

ENTRY FORM

EITHER:

GO ONLINE TO www.murraybridgerotary.org.au - TAB "GOLF TOURNAMENT" - COMPLETE FORM & PAYMENT

OR

POST THIS FORM TO " GOLF TOURNAMENT - ROTARY CLUB of MURRAY BRIDGE, P.O. Box 515, MURRAY BRIDGE, 5253 (together with a CHEQUE, unless paying by EFT.)

ENSURE ALL ENTRIES REACH THE ROTARY CLUB BY 13th April 2024

PLAYER No.1 MOBILE No. GOLF LINK No.
 HOME GOLF CLUB

PLAYER No.2 MOBILE No. GOLF LINK No.
 HOME GOLF CLUB

(NOTE: SINGLE PERSON ENTRIES WILL BE PAIRED WITH ANOTHER PLAYER BY THE COMMITTEE)

	NUMBER	TOTAL COST
FEES: \$ 50.00 (non M.B.G.C. members) (includes lunch)		\$
\$ 35.00 (M.B.G.C. members) (includes lunch)		\$
GOLF CART REQ'D - \$ 40.00 (single) YES <input type="checkbox"/> NO <input type="checkbox"/>		\$
\$ 20.00 each (share) YES <input type="checkbox"/> NO <input type="checkbox"/>		\$
EGG & BACON ROLL BREAKFAST @ \$5.00 EACH		\$
LUNCH FOR NON PLAYING FRIENDS OR PARTNERS @ \$10.00 EACH		\$
CHEQUE <input type="checkbox"/> OR EFT <input type="checkbox"/> (PLEASE TICK OPTION)	GRAND TOTAL	\$

EFT PAYMENT - ROTARY CLUB OF MURRAY BRIDGE INC. - BSB 065 505 - Acct. No. 10065572 - (INCLUDE YOUR SURNAME)

(PLEASE MAKE CHEQUES OUT TO THE ROTARY CLUB of MURRAY BRIDGE) **QUERIES:** PHONE JENNY (0407 239 845) or ROB (0429 678 579)





WELCOME TO BUSSELTON

The Australian Golfing Fellowship of Rotarians (AGFR) in association with **Ascot Satellite Rotary Club** and **Busseton-Geographe Bay Rotary Clubs** invite you to join Rotarians and Partners from around Australia for the 46th Annual AGFR Golf Tournament at the picturesque Busseton Golf Club

14 - 19 April 2024

The week includes 4 days of golf and lunches, welcome BBQ and closing Dinner. Non-golfers can enjoy their own program visiting the amazing sites and surrounds of the region.

Proceeds will support local Rotary projects and the John Hood Scholarship

The John Hood Scholarship provides financial assistance to young people between 20 and 29 years who have completed an apprenticeship in "Greenkeeping" to undertake studies in the Agricultural and the Horticultural Intern program at the Ohio State University. This combines studies at the University with nine months of paid practical work at some of America's finest golf courses.

For more information visit agfr.org



In order to participate in an Australian Golfing Fellowship of Rotarians Tournament, an entrant shall be a member of an Australian Rotary Club, a financial member of an affiliated Golf Club, have a certified Australian Course Rating Handicap or equivalent and reside in Australia.



Club of Busseton Geographe Bay





Rotary Youth Sailing Challenge



Next Sailing Challenge

20th– 24th April 2024

Cost \$1,200



For more information visit www.youthsailing.com.au

or

Contact: David Binks 0438 221 937 or Don Will 0414 645 402

Check out our video at <https://vimeo.com/828257288>



Visit the website <https://youthsailing.com.au>

Watch the video <https://vimeo.com/828257288>



PRESS TO RETURN
TO FRONT PAGE



Murray Bridge Rotary



Art Show

April 27th - May 19th 2024

Murray Bridge Regional Gallery

Entries Now Open

Three Categories

2D – Painting

3D – Ceramic / Sculpture

Photography

Visit

www.murraybridgeartshow.com.au

or scan this QR code

