



May 2024

CONTENTS:

May 2024

Youth Service Month

- 17 May—Clare Rotary Art Show—[page 2](#)
- 11-18 May—Campbelltown Art Show—[page 3](#)
- 01-19 May—Murray Bridge Art Show—[page 4](#)
- 25 May—Seaford Rotary Quiz Night—[page 5](#)
- 30 May—Murray Bridge Aged & Carers Expo—[page 6](#)

June 2024

Rotary Fellowships Month

- 29 June—Unley Quiz Night—[page 7](#)

Coming Up & For Your Information

- Paradise Mazda Promotional Ute—[page 8](#)
- Mitcham Shiraz Sale—[page 9](#)
- 4 Sep—Adelaide Parks Rotary—40th Anniversary—[page 10](#)
- 14 Sep—Say No to DV Walk—[page 11](#)
- 29 Sep—Youth Sailing Challenge—[page 12](#)
- Rotary Youth Program Dates—[page 13](#)
- Shelterbag Update—[pages 14-15](#)
- RAWCS Flood Appeal—[page 16](#)
- Rotary Action Group—Addiction Prevention—[pages 17-18](#)
- 13 Oct—Lift The Lid Walk—[page 19](#)



Send your classified to secretary23-24@rotary9510.org by 7th of the Month



Rotary  Club of Clare

26th Art Exhibition

Opening Night

Clare Town Hall

6.00pm Friday 17th May

Tickets \$15

Entry includes wine donated by

Clare Valley Wine & Grape Association & finger food

Tickets available at the DOOR



Saturday 18th– Saturday 25th May 2024

Entry \$5.00

MAJOR SPONSORS

 RayWhite

 **DON FARRELL**
Senator for South Australia

SKILLOGALEE
CLARE VALLEY

 **Clare Valley Toyota**
Right Here Right Now

 **Clare Valley Winemakers Inc.**
The Heart of Australian Riesling

 **Friends of Rotary**

 **Clare Valley Wine & Grape Association**

 **Clare Valley Family Dental**

WSB DISTRIBUTORS
AGRICULTURAL & INDUSTRIAL MACHINERY

 **SEVENHILL HOTEL**

 **Johnston Withers Lawyers**

 **S.C. HEINRICH & CO. PTY. LTD.**
CLARE 8842 4200

MacKenzie Homes

 **TAYLORS**
OF CLARE VALLEY

Office National

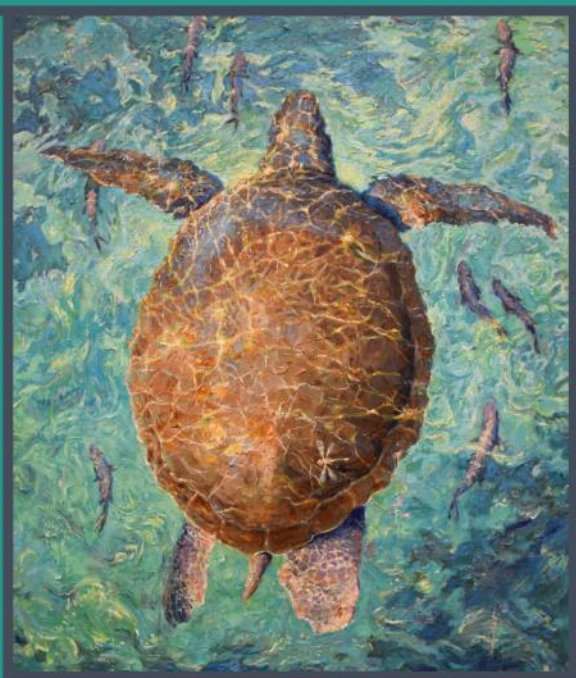
CAMPBELLTOWN

ART SHOW & SALE

Campbelltown Function Centre
172 Montacute Road, Rostrevor

Open 10am – 5.30pm Daily from
Saturday 11 May – Saturday 18 May

11-18
May
2024



Paintings,
Pottery, Porcelain,
Photography, Youth,
Aboriginal and
Islander Peoples' Art.

Demonstrations by
well known artists
throughout the week.

2023 First Prize Winner – **Ascend** by Nic Human

www.campbelltown.sa.gov.au/artshow or 8366 9222



Mobilong
Rotary
Murray Bridge



ART 2024 SHOW

ORIGINAL 2D - 3D & PHOTOGRAPHY
ALL WORKS ARE

FOR SALE

MURRAY BRIDGE REGIONAL GALLERY
SIXTH STREET MURRAY BRIDGE

WWW.MURRAYBRIDGEARTSHOW.COM.AU

APRIL
SAT 27
MAY
SUN 19
10AM - 4PM



Rotary

Club of Seaford



Quiz Night



The proceeds from the Quiz Night will support the purchase and installation of rainwater tanks in a remote mountainous village in Bali. Book a table of 8 or we will find a table for you.

BYO food and drinks.

Saturday 25 May 2024 7:30 PM - 10:30 PM

Moana Pioneers Memorial Hall 54 Nashwauk Crescent, Moana

Tickets: Individual \$15 Table (of 8): \$100

Tickets available at:

<https://seafordrotary.org.au/>





**MEET WITH GOVERNMENT AGENCIES AND LOCAL EXPERTS
IN AGEING AND DISABILITY**

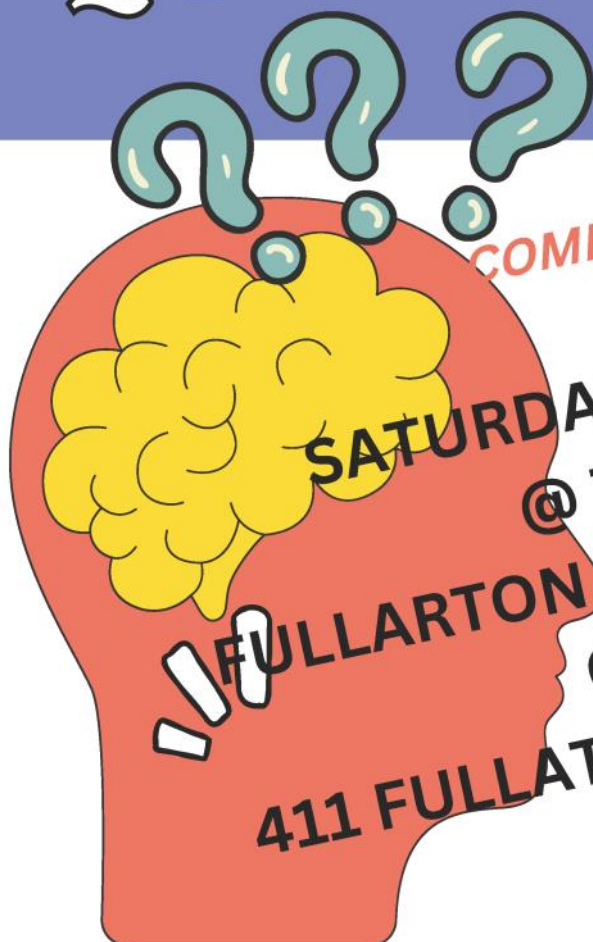
Adult Safeguarding Unit
Aged Care & Health Engagement
Aged Rights Advocacy Services
Care finder program
Carers SA
Catalyst Foundation
Community Care (RCMB)
Community Living Australia
Community Support Inc
Country Health Connect
Country & Outback Health
Dementia Australia
End of Life Direction for Aged Care
Flinders Uni Rural & Remote Health

Independent Living Specialists
iReach
Kalyra Care
Komplete Care
Murray Mallee Aged Care
Palliative Care SA
Resthaven
RSL Care SA
SAPOL
Services Australia
Sky Light
Tailem Bend Community Centre
Tindall Gask Bentley
U3A Exercise

FOR MORE INFORMATION CONTACT JOHN 0428 132 889

QUIZ NIGHT

Rotary
Club of Unley



COME JOIN THE CHALLENGE &
HAVE FUN

SATURDAY 29TH JUNE
@ 7:00PM

FULLARTON PARK COMMUNITY
CENTRE

411 FULLARTON RD, FULLARTON

\$20 A PERSON

\$180 A TABLE OF 10

STUDENTS \$10

WIN GREAT
PRIZES

SUPPORTING

ROTARY YOUTH PROGRAMS

<https://tinyurl.com/Rotary-Quiz-Night>

BYO DRINKS,
GLASSES & NIBBLES OR
BUY FROM THE WINE



WALL

SCAN HERE
FOR TICKETS



Having a Club Event and would like to use the 'Rotary Promotional Ute' ?



Once the dates are planned call David Fenton
email: promoute@rotary9510.org



PARADISE MAZDA

The Mazda People

Generously provided by PDG Jeff Neale



Fundraising

O'Leary Walker 2021 Clare Shiraz

This 2021 shiraz is floral with vibrant dark cherry and blackberry aromas. The palate is complex with flavours and soft tannins.

Alcohol 14%

\$125 per dozen

Dennis Reynolds

E: dennis.r47@bigpond.com

Collect payment from non-club members you
on-sell to and then pay the amount into the

Projects Account: BSB 105-078, 053303140

Ref "surname & wine"



QR code -- Mitcham Rotary Club website



Save
The Date

HELP THE ROTARY CLUB
OF ADELAIDE PARKS
CELEBRATE THEIR 40TH
BIRTHDAY

WEDNESDAY, 4TH OF SEPTEMBER

For further details email
rcadelaideparks@gmail.com





Rotary Says No to Domestic Violence



The walk is on again in 2024

When – **Saturday 14th September 2024**

Where – **We start to gather at 9.00am Victoria Sq and depart at 10.00am.**

Finishing – **Elder Park approximately 10.30am**

Stay for some presentations.

Plus, Coffee/Tea – BBQ – Donuts.

All gone by 12 noon.

Last years walk was fantastic and well attended, and we like to see more this year.

See update photos from last year by visiting our web site -

www.StopCoerciveControl.au

Register on the web site to walk this year and encourage others to join you.

Make a donation to assist our fund raising – online.

Jeff Cluse (Chair) Rotary Club of Regency Park.

Chair of Rotary Says No to Domestic Violence.

chair@stopcoercivecontrol.au 0417573696

Initiative of
Rotary
District 9510



Youth Sailing Challenge

Next Sailing Challenge:
29th Sept– 3rd Oct 2024



Do you, or someone connected to your club know a young person aged 15 to 18 years that would benefit from facing the life-changing challenges experienced from learning to safely sail a tall ship at sea? Would your club sponsor them?

Cost to club : \$1200

For more information visit www.youthsailing.com.au
or contact:

David Binks 0438 221 937 or Don Will 0414 645 402

Check out our video at <https://vimeo.com/828257288>





ROTARY YOUTH PROGRAM DATES 2024

YOUTH SAILING CHALLENGE

APRIL SAILING DATES

Sat 20th April to Wed 24th April

STUDENT & CLUB APPLICATIONS:

by Wed 20th March:

CLUB EXPRESSIONS OF INTEREST:

by Tues 20th Feb

FULL COST: \$1200 (parents may make a contribution)

SEPTEMBER SAIL DATES: Sun 29th Sept to Thursday 3rd Oct

RYLA -Rotary Youth Leadership Award

PROGRAM DATES: Sat 21st Sept - Fri 27th Sept

APPLICATIONS CLOSE: Sat 31st August

COST TO CLUBS: \$1150 (\$1100 for subsequent applicants sponsored by the same club)

VENUE: Nunyara Conference Centre, Belair

RYPEN -Rotary Youth Program of Enrichment

There will be **no** RYPEN Sunraysia

Adelaide Metro RYPEN

PROGRAM DATES Fri 1st - 3rd November

APPLICATIONS CLOSE: Monday 21st Oct

COST TO CLUBS: \$440 (\$415 for subsequent applicants sponsored by the same club)

Applicants complete online application & pay \$30. This is fully refundable if student withdraws application by 21st October

VENUE: Nunyara Conference Centre, Belair

RYPEN Host Club contributes \$1200 (previously \$1,000)

NYSF -National Youth Science Forum

Dates & costs to be advised for Jan 2025

ROTARY CLUB OF GAWLER LIGHT INC

District 9510 - South Australia

ABN 43 143 150 788

**Shelterbags for the Homeless in South Australia Newsletter April 2024**

Dear Partner Rotary Clubs,

Good news! The container of 900 Shelterbags from South Africa has arrived in Melbourne where they are being divided between NSW (RC Terrigal), VIC (RC. Mt. Waverley) and SA (Rotary Club Gawler Light). We expect delivery to DIK/RARE warehouse at Edinburgh any day now and will be in contact with you again very soon to arrange collection.

To date we have 20 partner Rotary clubs from District 9510 who have committed to supporting the Shelterbag Project through the purchase of Shelterbags for local distribution or in general support of the project. The final cost of a Shelterbag has worked out at \$92.77 each. That's a bit more than we expected and up from around \$80 when we first started our pilot project in Gawler with bags imported 2 years ago! The good news for partner clubs is that the extra donations we received will cover the extra cost above the \$90/bag on your invoice.

After a late run of interest from clubs we were able to increase our quota of Shelterbags from 300 to 350 to cover the extra orders and we still have a small number in reserve. It remains to be seen whether we can procure any more bags from interstate during winter but, if so, they will have to be charged at the full price plus any additional transport costs.

We will organise collection days at DIK/RARE in the near future as semi-working bees (with barbeque) for partner clubs to come and roll up their own bags and take them away. Alternative arrangements will be made as necessary.

Shelterbags come flat-packed in shrink wrapped bales of 10 which we will unwrap for checking and stencilling with the District 9510 logo. We recommend that partner clubs add their club's name and an identification number to aid recovery should they be lost or stolen and found. It will also give you a means of reconciliation with your local community organisation or outreach agency and a reference for them to record the date issued and perhaps some other statistics. We wrote our ours discreetly inside the pocket and at the toe with Texta/paint pen.

As we found with our pilot project in Gawler there are many sensitivities and privacy issues which limit the amount of data that can be divulged to third parties but any information such as age range, gender and anecdotal comments may be valuable for future grant funding and promotion of Shelterbags. In three months, we will send you a request for feedback on how your local distribution is going.

I'd like to share with you the attached article from Gawler's local newspaper, the Bunyip, which gives a good account of how Gawler's Red Room Project is benefitting the needs of homeless persons through its collaborative framework. When we first started our Shelterbag Pilot Project the timing was just right for us to fit into this wider alliance of community organisations, which was initiated by Gawler Police and also includes Council and representatives from several government and non-government agencies, who meet regularly to help resolve related issues and facilitate referral pathways.

Finally, I would like to thank all those Rotary clubs and individuals who have supported the Shelterbag Project thus far and for the hospitality you have extended to myself or other members of the Shelterbag team on our visits to your clubs. We wish you all the best in liaising with your local community organisations and the distribution of your Shelterbags.

Richard Tucker

Project Manager - Rotary Club Gawler Light - richard.tucker@iinet.net.au ph. 0429 339 879



"THE BUNYIP" GAWLER, Wednesday, March 27, 2024 Page 5

Compassion key to helping Gawler's rough sleepers

AIDAN CURTIS

GAWLER police and Riverside Salvation Army are encouraging the community to show compassion for people sleeping rough on the back of increased concerns around homeless people in the town.

In recent weeks, Gawler police have seen a number of complaints centred around the number of homeless people in town and concerns their presence will lead to a rise in crime.

However, Gawler officer in charge Senior Sergeant Robert Mowday said that was not the case.

SS Mowday said Gawler was bucking the trend in terms of both the number of rough sleepers and crime related to them through the work of initiatives like the Red Room Project (RRP).

"The Red Room Project ensures police actively seek out and engage with rough sleepers and homeless people around town, around the clock – especially on night shift," he said.

"Police build relationships with them, which not only enhances their personal safety, but provides an avenue for them to report crime.

"Then what we can do is join or unite local services to meet and address their bespoke individual needs in a cohesive sort of way."

In looking at metropolitan Adelaide, SS Mowday highlighted Hutt Street Centre, for example, has seen requests for food and showers up between 50 and 100 per cent – the largest increase since its records began in 1954.

Catherine House, a service to aid women, had reported it was only able to assist one in five women in 2023 due to increased demand.

SS Mowday said through RRP, police and the associated services in Gawler have actually seen a reduction, with six rough sleepers in the area getting into housing and two getting into rehabilitation programs.

"Since we started the Red Room Project in mid-2022, we had over 60 rough sleepers come to the area and it probably spiked at 15 or 16 at one time," he said.

"We've got the numbers down to less than 10 [in Gawler at any one time] – that fluctuates probably between seven and 10, that could be different tomorrow than it is today.

"In the context of over 60, I think that's



Gawler police officers including Senior Constable Randal Murch and Sergeant Debbie Luetkins often engage Gawler's rough sleepers to connect them to services like Riverside Salvation Army.

PHOTO: Aidan Curtis

pretty good."

The engagement with RRP has also led to an 18 per cent reduction in rough sleepers being exposed to or suspected of crime in Gawler.

"Leading into engaging with Red Room, 39 of the rough sleepers had been either a victim of crime or a suspect in the six months leading up to engagement," SS Mowday said.

"Upon engaging the Red Room, in the six months afterwards, that had reduced to 22 of those either being a victim of crime or a suspect."

Riverside Salvation Army has been a part of RRP from the get go, with Riverside church leader Darren Dwyer helping SS Mowday get the project off the ground.

Mr Dwyer said RRP has had a big impact in tailoring individual help for homeless people accessing the various services and support.

"To actually work hand in hand with local authorities and police, to really tailor a plan for each individual as best that we can, has been fantastic," Mr Dwyer said.

"I think to be able to then have all the organisations that somehow have interactions

with homeless people, or potentially homeless people, and then invite them here where they can build that relationship and then move on into accommodation or rehab, has been really helpful.

"Everyone finds this is a safe place to be themselves, and they know that if they do want to engage and move forward, then we will support them."

Both SS Mowday and Mr Dwyer said they believe a community is judged by how it treats its most vulnerable people and called for more compassion going forward.

"It's not illegal to be homeless, it's not illegal to be sleeping rough – it's about us assisting them," SS Mowday said.

"It's also about the community understanding, being aware and showing compassion for the plight of these people who are struggling for different reasons.

"At the end of the Red Room, we don't want anybody homeless or sleeping rough in Gawler. I think it's achievable.

"We're getting there slowly, but need everybody's assistance. We need the entire community to work with us."



Dear Rotarians

Our country has once again been impacted by extreme flooding and the effect for the residents has been traumatic. To empower Rotary to be on the front foot to combat the relief required, Rotary Australia World Community Service (RAWCS) has established a **Flood Disaster Appeal Fund** to receive donated funds to disperse through the appropriate Rotary Districts and Rotary Clubs in supporting those severely impacted by the floods.

Please see details below: Flood Disaster Appeal Fund - Australia (RARF)

RAWCS has registered a national flood appeal.

Description: To raise funds to support humanitarian relief projects for those impacted by flood disasters within Australia.

The direct link to this RAWCS Project – <https://directory.rawcs.com.au/33-2023-24>

The online donation link is- <https://donations.rawcs.com.au/33-2023-24>



ABC NEWS Posted Sat 7 Jan 2023

Evacuation orders in recent weeks advised people to flee from rural towns across Queensland, New South Wales, Victoria. The Northern Territory, Western Australia and South Australia are yet to determine the full impacts of flooding, which is still posing an ongoing threat to safety.

Australians in the past week have lost access to food and water and access to their towns, and some have even lost their animals and homes.

Heavy rain over some parts of the country has fallen on **already saturated catchments**, "The year was characterised by wetter-than-average conditions across much of eastern Australia," a summary from the Bureau of Meteorology (BOM) said on Friday.

Photograph courtesy of Melody Beutel

Project Name: Flood Disaster Appeal Fund - Australia (RARF)

Project number: 33 2023-24

Description: To raise funds to support humanitarian relief projects for those impacted by flood disasters within Australia.

Tax Deductibility: Rotary Australia Relief Fund (Managed by RAWCS) has Deductible Gift Recipient (DGR) registration and has been listed as a Charitable Fund so we can accept tax deductible donations from individuals or organisations.

Further inquiries:

Merv Williams – National Manager Projects & Volunteers – M. 0439 534 791 /

national.projects@rawcs.org.au

Brad Quilliam - National Projects Supervisor - M. 0488 998 338 / projects.supervisor@rawcs.org.au



What does RAG AP do?

Forges partnerships between Rotary Clubs and their local communities to:

- tackle the problems of addiction at a local level
- bring expertise together for study & exchange
- shares good practice across the globe

www.rag-ap.org
info@rag-ap.org



Rotary Action Group for Addiction Prevention

Substance abuse and addiction are a global problem.
Structural and continued actions are necessary.

Give our kids the future they deserve!
Communities **working together** are more effective!

- | | |
|-------------------|---------------------------------|
| ▶ Local Councils | ▶ Youth & Sporting Clubs |
| ▶ Schools | ▶ Law Enforcement Practitioners |
| ▶ Health Agencies | ▶ Businesses |

RAG-AP is highly **supported by:**

- ▶ Drug Free Australia
- ▶ University of Cambridge
- ▶ UN Office of Drug Control
- ▶ World Federation Against Drugs



Office on Drugs and Crime

The Rotarian Action Group for Addiction Prevention operates in accordance with Rotary International policy, but is not an agency, nor controlled, by Rotary International
IVZW BE0663.669.347



Cooperation with Countries

RAG AP can help countries translate their national vision and policies into concrete actions by prospecting the support of Rotary clubs and districts in the country concerned.

Cooperation with NGO's

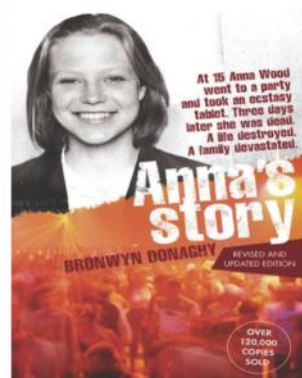
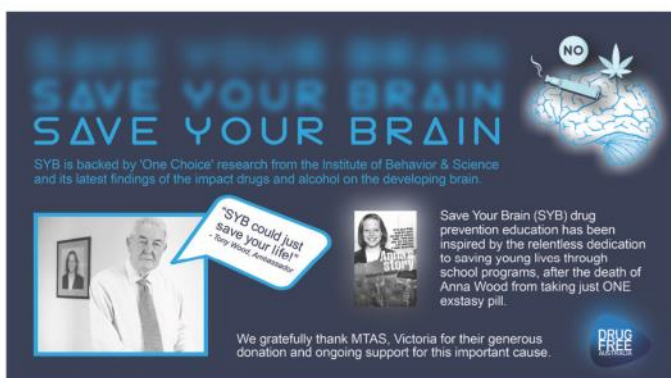
RAG AP cooperates with NGOs whereby the local branches of the NGO are helped to roll out their evidence-based prevention programmes with the support of the local Rotary clubs.

Cooperation with Rotary Clubs and districts

RAG AP informs, motivates and supports Rotary clubs and districts to implement evidence-based prevention programmes in their local communities in cooperation with professional NGOs.

Australian Resources

- ▶ Speakers (including those with lived experiences) telling their stories.
- ▶ Informative books strategically placed in schools and community libraries.
- ▶ saveyourbrain.com.au - a website promoting healthy brains. Plus mentoring for teachers, school counsellors, parents & caregivers, to guide young people in their use of the website.



Join us and make a difference!

Contact Rotary Reps: Jo Baxter & Herschel Baker

 rag-ap.org  admin@drugfree.org.au

The Rotarian Action Group for Addiction Prevention operates in accordance with Rotary International policy, but is not an agency, nor controlled, by Rotary International

IVZW BE0663.669.347



LIFT THE LID WALK

PHYSICAL HEALTH FOR MENTAL HEALTH 2024



Visit the **Kangaroo** sculptures of the **Wet Lands** and then walk the 150 year old elm tree lined **CARRIAGEWAY**, and on to the **HIMEJI JAPANESE GARDENS**.



The 1882 Bluestone **Grand Stand** should not be missed.

What better way to enjoy a Sunday morning on **13th October 2024**