



# PELDS

Presidents-Elect Learning Development Seminar

11-12 April 2026

Day 2



SILVERWATER RESORT  
PHILLIP ISLAND, AUSTRALIA

# Rotary

District 9815



**Actively participate!**  
**Have fun**

In an emergency  
Follow instructions, stay calm



Mobile phones on  
silent

# Housekeeping

Morning Tea at 10.35am



Lunch at 12.30pm



**Rotary**  
District 9815



# **Emergency Management**

***PDG Janne Spiers***



# VICTORIAN BUSHFIRE EMERGENCY PRESENTATION

President Elect Learning and Development weekend

12<sup>th</sup> April, 2026

Janne Speirs

# COMPARISON - 2009 LATROBE VALLEY WITH 2026 WESTERN VICTORIA (Longwood brackets)

## 2009 Latrobe Valley

- ▶ 25,861 hectares
- ▶ 11 deaths
- ▶ 145 houses
- ▶ Wildlife, pine plantations, power infrastructure, stock, outbuildings
- ▶ Arson

## 2026 W Victoria (Longwood)

- ▶ 400,000 (L - 130,000) hectares
- ▶ (L - 1 death)
- ▶ 300 (L - 173) houses
- ▶ Mainly grassland, stock, outbuildings, wildlife
- ▶ Potentially trailer on Hume



The human  
impact is  
devastating

Nothing is left  
standing in  
these  
communities



School children in  
these  
communities have  
nothing





Vital help comes from volunteers - fencing is essential and often the only weatherproof roof over your head is one put there by volunteers!! (In this case - Tasmanian Rotarians in 2009) This practical assistance is invaluable but even more so is the knowledge that someone is interested and cares for the situation survivors find themselves in.

# We can help our fellow Victorians

- \* Financial support
- \* State Schools Relief (RC Sorrento)
- \* Victorian Emergency Relief Network - furniture, whitegoods, etc (a flier went to Clubs about this a couple of months ago)

The  
**Rotary**  
Foundation





Over time, nature is a wonderful healer, but Victorians need our help now - and will continue to do so for some time to come!!

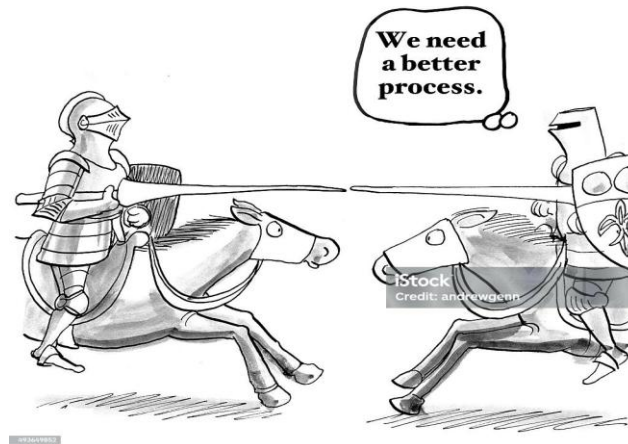


# **Legal Responsibilities**

***Chris Drenen***

# Club Protection

Chris Drenen, D9815 Legal Officer  
Resolution Pathways Registrar - Rotary South Pacific  
Inverloch Rotary



# What is Club Protection?



Neither the RI website (rotary.org) nor the D9815 website refer to “Club Protection”.

What then is Club Protection?

1. Ensuring compliance with legislative requirements.
2. Ensuring compliance with Rotary requirements.
3. Ensuring actions taken by your Club comply with its Constitution and By-Laws.
4. Public image issues – how does the community see your Club? More importantly, what image are you projecting for your Club?
5. Dealing with conflict issues as they arise.

# Compliance issues



Compliance is an ongoing requirement:

1. Holding the AGM and lodging annual return within required timeframes.
2. All members provide confirmation of WWC and provide a completed Form 3.
3. Maintain registers for WWC and Volunteer Declaration forms.
4. Ensuring all actions taken by the Board/Club are within the confines of RI Rules.

# Dealing with Conflict



How do you handle conflict and disagreements among volunteers?

Conflict is a struggle or contest between people with opposing needs, ideas, beliefs, values, or goals.

Rotary International Code of Policies, specifically clause 26.120 headed “Harassment-Free Environment at Meetings, Events, or Activities”:

“Rotary is committed to maintaining an environment that is free of harassment. Harassment is broadly defined as any conduct, verbal or physical, that threatens, denigrates, insults or offends a person or group based on the following characteristics: age, ethnicity, race, color, disability, religion, socioeconomic status, culture, sex, sexual orientations, or gender identity.”

## Dealing with Conflict



It is critical that any harassment, bullying or conflict concerns are reported to the DG promptly and are dealt with appropriately.

If an external complaint is received, contact the DG immediately.

The DG will then liaise with the District's Legal Officer, and if necessary, the District's Insurance Officer.

There are reporting requirements and the DG will make any necessary decisions.

## Dealing with Conflict



Always bear in mind **Rotary's Four Way Test:**

Is it the truth?

Is it fair to all concerned?

Will it build goodwill and better friendships?

Will it be beneficial to all concerned?

The Four Way Test is a personal self-check; not an assessment of others.

# Managing Conflict



Here are some tips to help you manage volunteer conflicts effectively and constructively:

## Identify the issues early

- Pay attention to tensions before they escalate
- Encourage open and honest conversations

## Stay neutral and fair

- Focus on facts, not personalities
- Listen so that you understand the situation (facts and context)
- Remain impartial; do not take sides

# Managing Conflict



## Promote respectful dialogue

- Set ground rules for communication

## Use mediation skills

- Listen actively and acknowledge feelings
- Guide members towards common ground

## Focus on solutions

- Listen actively and acknowledge feelings
- Guide members toward common ground
- Seek a win-win solution

## Managing Conflict



### Strengthen team spirit

- Celebrate successes together
- Reinforce fellowship and respect

If the matter does not resolve, the DG and the District's Legal Officer can assist in arranging mediation, most likely with the appointment of a mediator outside of D9815.

## District Policies



Did you know that the District has policies to assist you if conflict arises?

- Conflict Resolution Policy, to be read in conjunction with
- Bullying and Harassment Policy

## District Policies



The Policies were introduced to ensure that all District Officers, Club Presidents, and Club Members:

- Understand what constitutes sexual harassment and bullying and to act promptly to discourage any such behaviour.
- Make sure all members, partners and participants in Rotary activities are aware of what constitutes sexual harassment and bullying.
- Fully understand the responsibilities in relation to a claim of sexual harassment or bullying by any of the above.
- Know the process and whom to contact regarding any form of harassment or conflict.

## The Conflict Resolution Process



The District's policies will ensure that the Club President, District Governor and members of the District Conflict Resolution Team can:

- a) provide support;
- b) treat the complaint seriously; and
- c) take the appropriate steps to deal with the complaint.

## Role of Club Presidents in conflict resolution



Club Presidents should ensure the following:

1. Awareness.
2. Communication.
3. Preventative action.
4. Act promptly after a complaint is lodged.

# Role of Club Presidents in conflict resolution



When dealing with the Complainant the Club President should:

1. Listen seriously and sympathetically.
2. Establish what outcome the Complainant wants.
3. Make every attempt to resolve the matter informally.
4. Regularly review.
5. Maintain confidentiality at all times.

## Some examples



Some issues that I have dealt with in 2025/26 include:

1. **Inappropriate comment** - an innocuous, but silly comment, made to a parent at a Bunnings BBQ resulted in a complaint to Bunnings head office which was then directed to Parramatta.
2. **Bullying** - white anting and inappropriate comments about Club officers.
3. **Harassment** - complaint received regarding inappropriate actions of a Club member at an external function.

In a different District - a member sought and received a Council grant for a proposed project without informing the Club's Board! The Club commenced the process to terminate membership, but the member resigned.

## Rotary South Pacific initiative



Rotary South Pacific recently set up a group (at this stage just me) to monitor and track disputes throughout the Zone.

My title is Resolution Pathways Registrar - Rotary South Pacific and I am working closely with PDG Ian Scott.

An official release has not yet occurred so D9815 has received this information early!

Any lawyers out there with time availability?!

In closing



Conflict issues are not situations to ...



*"Never, ever, think outside the box."*

**Rotary**  
District 9815



# Foundation

***PDG Alma Reynolds***



***CREATE  
LASTING  
IMPACT***

# The Rotary Foundation President Elect Learning 2026



# Mission

To enable Rotarians to advance world understanding, goodwill, and peace through the improvement of health, the support of education, and the alleviation of poverty.

Endorsed by 2007 Council on Legislation



# Your Easiest Foundation Reference

The best starting point for all things Foundation is the Rotary Foundation Australia website at

[rotaryfoundationaustralia.org.au](http://rotaryfoundationaustralia.org.au)

Click on “My Foundation” for direct access to all the Foundation admin information you need, including:

- Forms
- Recognition programs
- Brochures
- Easy links to RI website sections
- How to
- Resource guides

And much more.

***CREATE  
LASTING  
IMPACT***

# Rotary Foundation Grants

**Rotary**  
District 9815



# Foundation Grants – Money for Your Club Projects

**CREATE  
LASTING  
IMPACT**



# Two Types of Grants

## DISTRICT GRANTS

Small-scale, short term,  
Community-focused projects

## GLOBAL GRANTS

Large international projects  
with sustainable, measurable  
outcomes in one of Rotary's  
areas of focus.

***CREATE  
LASTING  
IMPACT***

***CREATE  
LASTING  
IMPACT***

# Global Grants

**Rotary**  
District 9815



# Global Grants

To apply for a Global Grant

1. A project
2. A project partner in another country
3. US\$10,000

Once you are confident you will have these three things, seek advice from a District team member.

- Global Grants Co-Ordinator – Charlie Speirs
- International Team Leader – Janne Speirs
- Foundation Team Leader – Alma Reynolds

**CREATE  
LASTING  
IMPACT**

# Global Grants

***CREATE  
LASTING  
IMPACT***

More stringent requirements than District Grants

Lots of available expertise.

D9815 currently has nearly US\$1.5 million worth of Global Grants underway.



# CERVICAL CANCER SCREENING-INDONESIA

Purchased, equipped and deployed a mobile cervical screening clinic.

Rotary Clubs of Monash Glen Waverley and Semarang Kunthi



# WASH IN SCHOOLS - INDIA

New or refurbished toilets in 5 schools in South Delhi.

Rotary clubs of Box Hill Central and Delhi Ashoka



***CREATE  
LASTING  
IMPACT***

# District Grants

**Rotary**  
District 9815



# LILYDALE

---

Supplied and installed a new kitchenette for Holy Fools outreach and drop-in centre.





# ROWVILLE LYSTERFIELD

---

Installed solar lighting at Family Care School in Uganda.

Also purchased a maize grinder for use by the school and the village.





# WARRAGUL

---

Furnished and equipped a new counselling space at Warragul RSL. The centre caters to ex service people and former first responders

# BEAUMARIS

---

Upgraded cooking facilities  
at Seba Sabu Girls' Hostel ,  
Sabu Island Indonesia.



***CREATE  
LASTING  
IMPACT***

# District Grant Parameters

- Maximum grant is \$5,500
- Club match \$ for \$
- Multi-club projects - \$1,000 more per extra club
- Up to two grants per year (conditions apply)

***CREATE  
LASTING  
IMPACT***

# Club Requirements

- Be up to date with all current grant reporting requirements
- Be Grant qualified with the District.
- Have appointed a Club Foundation Chair
- Have posted Foundation and Polio Plus goals in Rotary Club Central

# Project Requirements

***CREATE  
LASTING  
IMPACT***

- Must be a PROJECT – not a fundraiser
- Participation of Rotarians
- Promotion of Rotary involvement

# The Process

1. Submit the initial project idea with grant requirements on the District Grant Intention form. Closing date will be announced. Form is online
2. Complete application ASAP after 1 July and before end October and await approval
3. Complete project
4. Submit final report and docs to receive grant

**CREATE  
LASTING  
IMPACT**

# Special District Grants

- Low level education grants – 20 @ \$500
  - Match \$ for \$
  - Simplified process
  - Specific form and reporting requirements
- Community Assessment grants.
  - Required for Global Grant
  - Same conditions as other District Grants

***CREATE  
LASTING  
IMPACT***

# Tell Your Story

- When the project is done:
  - Hold a launch event
  - Add a plaque or sign
  - Involve local media
  - Add a story to your website (this is a must!)
  - Post on social media
  - Involve project partners

***CREATE  
LASTING  
IMPACT***

***CREATE  
LASTING  
IMPACT***

# Corporate Social Responsibility Grants

**Rotary**  
District 9815



***CREATE  
LASTING  
IMPACT***

# Supporting the Foundation

**Rotary**  
District 9815





# Rotary Fundraising

Rotary has FOUR Funds that you can contribute to



1

## Annual Fund

Funding the projects and scholarships of The Rotary Foundation.

## Endowment Fund

Funding the World Fund to support the DDF for Global and District Grants as well as projects at the Trustees discretion

2

3

## Polio Fund

Directly funds our highest priority project

## Disaster Fund

Enabling grants of US\$25,000 for rapid disaster recovery

4

# IMAGINE

---

What IMPACT we could have in

ENDING

POLIO



END  
POLIO  
NOW

## Latest on Polio

At 23 March this year only 1 case of wild polio virus had been confirmed in Pakistan. Zero confirmed cases in Afghanistan.

For the latest Polio news and case numbers go to [endpolio.org](http://endpolio.org)

**CREATE  
LASTING  
IMPACT**

# Multiply Club Polio Giving

District 9815 has set aside \$US10,000 to multiply club giving

Your club donates US\$1,000; D9815 matches it with US\$1,000 of DDF; the Annual Fund provides a further match; Bill & Melinda Gates Foundation matches the full amount 2:1

Total positive input to the Polio Fund  $\approx$  US\$8,400

Only available for the first 10 clubs to donate US\$1,000 to the Polio Fund on or after **4 July 2025**.

**CREATE  
LASTING  
IMPACT**

# Club Giving Recognition



When club giving  $\geq$  US\$100 per member



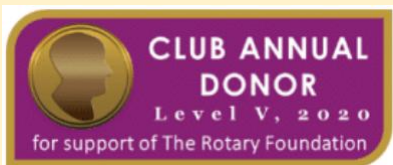
When club giving  $\geq$  US\$250 per member



When club giving  $\geq$  US\$500 per member



When club giving  $\geq$  US\$750 per member



When club giving  $\geq$  US\$1000 per member

# Why Clubs Give to the Foundation

The purposes of this club are to:

- (a) pursue the Object of Rotary;
- (b) carry out successful service projects based on the five Avenues of Service;
- (c) contribute to the advancement of Rotary by strengthening membership;
- (d) support The Rotary Foundation; and
- (e) develop leaders beyond the club level.

**CREATE  
LASTING  
IMPACT**

# Donor Contribution and Recognition Program

## PERSONAL GIVING



### EREY & Centurion

Annual contribution of US or AU\$100



### Paul Harris Fellow

Total contribution of US\$1000



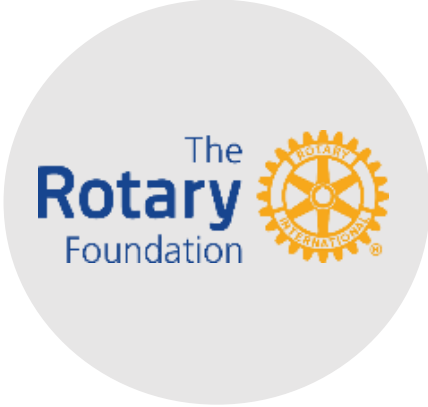
### Paul Harris Society

Annual contribution commitment of US\$1,000



### Major Donor

Personal gift or cumulative contributions of US\$10,000+



## PERSONAL LEAVING



### Benefactor

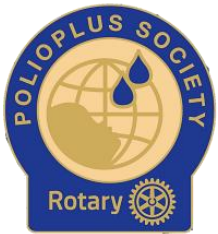
Personal bequest of US\$1,000+



### Bequest Society

Personal bequest of US\$10,000+

## ENDING POLIO

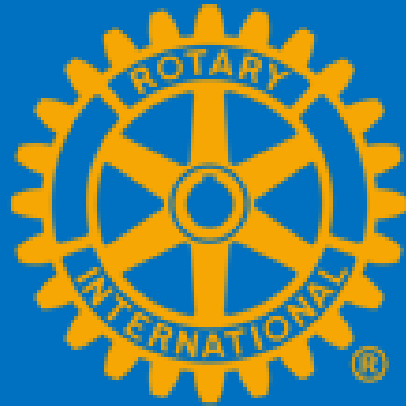


### PolioPlus Society

Personal annual commitment of a minimum of US\$100 to the PolioPlus Fund until polio is eradicated.

# Your Money Stays in Australia

The  
**Rotary**  
Foundation



Rotary  
Foundation  
Australia

***CREATE  
LASTING  
IMPACT***

## Action Steps

- Appoint a club Foundation Chair
- Decide upon and post Foundation and Polio Plus goals
- Encourage regular Polio updates in your club
- Take advantage of DDF Polio Plus match
- Encourage personal giving among your members
- Reference Rotary Foundation Australia

When you give  
to the Rotary  
Foundation, the  
world will thank  
you.



***CREATE  
LASTING  
IMPACT***

**Over to you...**

**Rotary**  
District 9815





**Morning Tea at 10.35am**

**Back by 11.05am**

Rotary message 1

**Rotary**  
District 9815



# **Environment**

***Pat Armstrong***



# Rotary Action for the Environment

---

**PAT ARMSTRONG**

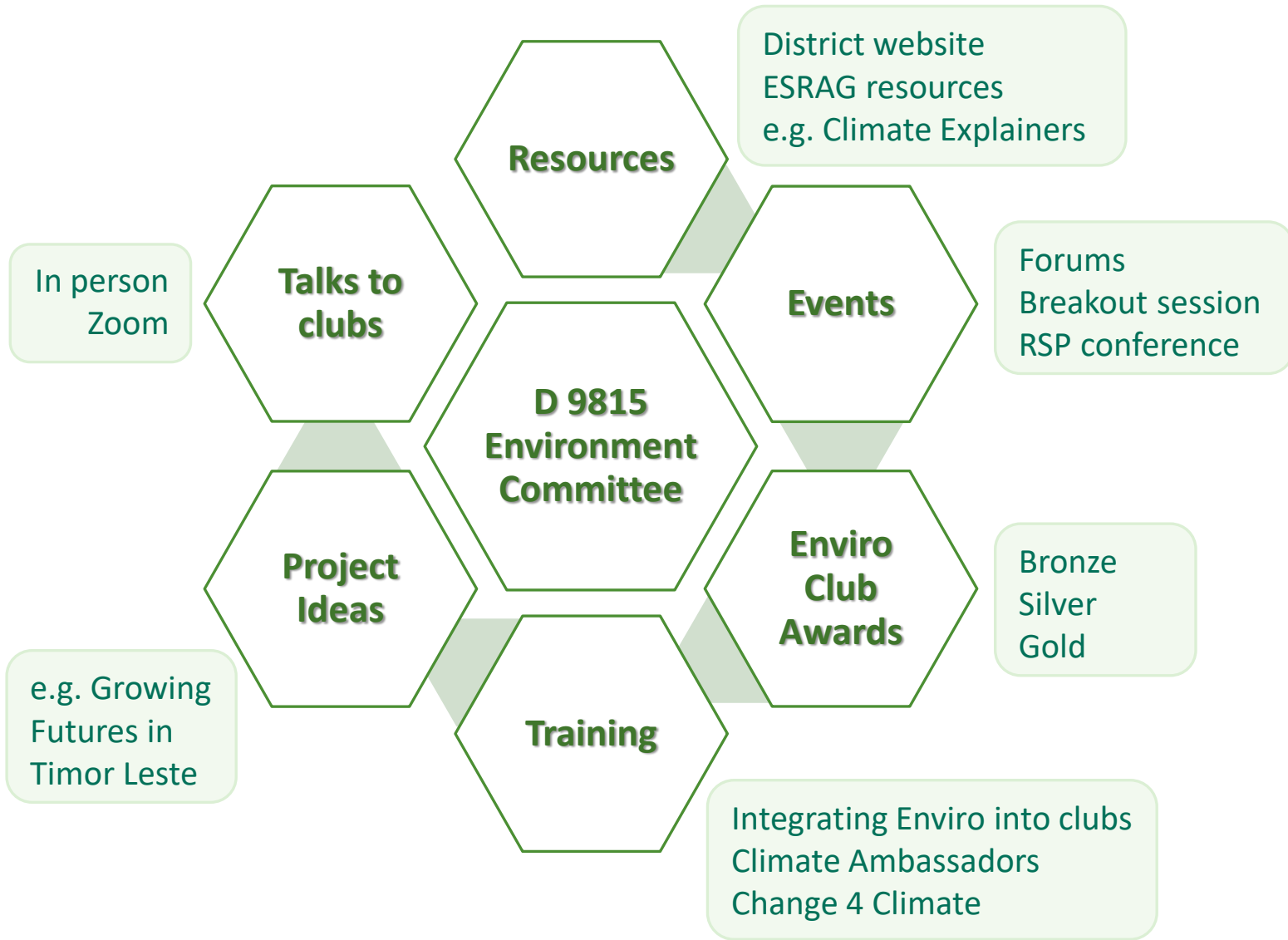
D 9815 CHAIR, ENVIRONMENT  
COMMITTEE

PAST CHAIR ESRAG 2022-2023

[pat.arm@bigpond.net.au](mailto:pat.arm@bigpond.net.au)



# District 9815 Environment Committee



**We are here to help!**



# Rotary South Pacific Conference

D 9815 and ESRAG will provide a series of events at the Rotary South Pacific Forum in Mebourne in October 2026

- A one day ESRAG forum – *Imagine the Future*
- Breakout session: *Change 4 Climate*





---

# ESRAG Change 4 Climate

*- approved by the Rotary South Pacific Council*



# Climate change: Summary

It is **real and is happening now.**

It is having **serious** impacts - people & environment.

It unevenly affects the **most vulnerable people.**

There are **solutions.**

There is **hope.**

It is **urgent**, but time is running out.

# Climate action creates opportunities



**Engage members** through practical projects



**Increase the pride** of members through a sense of purpose



**Attract new members,** especially younger people



**Build partnerships** with clubs, districts, businesses, & environment/community groups



**Attract funds** for climate projects



**Enhance the brand of Rotary clubs** as local climate leaders

# *Change 4 Climate* - an ESRAAG Initiative

## **Purpose:**

To guide Rotary clubs, districts and zones to take positive actions to address the causes & consequences of a changing climate



# Change 4 Climate – model District

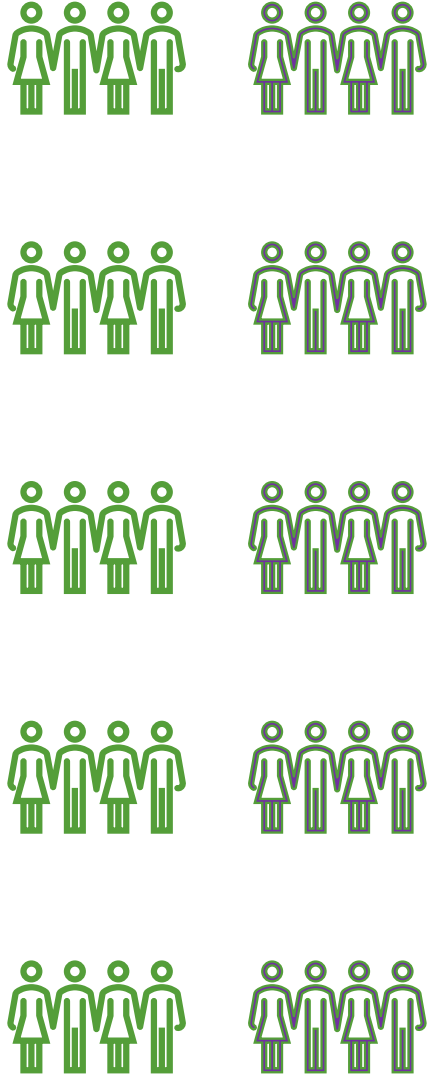
## District Leadership



## District Support Team



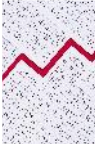
## Clubs – Enviro Teams



## Results



Rich stories



Metrics



Project ideas



Partnerships



Opinions



Events

Policy & L&D

Rotary South Pacific  
C4C Pilot

C4C Committee

Impactful Projects

Proposed Alliance of  
Regional Taskforces

Safe – Secure - Sustainable - Healthy

e.g. Growing Futures  
in Timor Leste

Features

Local regional focus  
District representatives  
Fosters innovation  
Strategic planning

Benefits

New partnerships  
Relevance – meaningful projects  
Membership - sense of purpose  
Positive branding



Features

Scalable  
Replicable  
Measurable outcomes  
Across Areas of Focus & RAGs

Benefits

Quality of life – beneficiaries  
Environmental regeneration  
Community development  
Inspiring stories

RAGs: Disaster Assistance - Economic - Education - Environment - Health - Peace - WASH

# Growing Futures in Timor Leste

## RC Melbourne - Growing Futures Global Grant application

- Plant 60,000 trees
- Support 120+ farmers to maintain trees
- \$90,000 farmer payments over 3 years
- 3 Training events, with new training materials



# EnviroClub Awards (D 9815)

## Resources

- Information pack
- Basic Awards and PLUS Awards
- Online applications
- Templates, certificates
- Sample pledges, policies & plans

## Bronze Award

- ✓ Your club's environment / climate achievements and plans
- ✓ Carbon emissions

## Silver Award

- ✓ Deliver club plan
- ✓ Maintain achievements
- ✓ 1+ new initiative

## Gold Award

- ✓ Deliver club plan
- ✓ Maintain achievements
- ✓ 2+ new initiatives
- ✓ Leadership



# EnviroClub **PLUS** Awards (D 9815)

## Resources

[ESRAG Oceania](#)

[carbon estimator](#)

[ESRAG Europe carbon](#)

[calculator](#)

[ESRAG flight estimator](#)

Michael Koch (2024)

“The 7 steps to a climate

friendly & sustainable

Rotary Club”

**Bronze  
PLUS Award**



**Silver PLUS  
Award**



**Gold PLUS  
Award**

- ✓ Complete all *Bronze Award* requirements
- ✓ Plans
- ✓ Club carbon ↓ plan

- ✓ Complete all *Silver Award* requirements
- ✓ 1+ new climate initiative
- ✓ Maintain Bronze +

- ✓ Complete all *Gold Award* requirements
- ✓ Demonstrate Net Zero
- ✓ Maintain Silver+

**Net Zero = “The net amount of greenhouse gas emissions, less those removed from the atmosphere”**

# Take away messages

## Key points:

- Environment is one of the seven Rotary areas of focus.
- The D 9815 Environment Committee is here to help your club.
- Climate Change is a serious threat to people and the environment.
- The RSP Council has approved a pilot of ***Change 4 Climate*** in Zone 8.

## What your club can do:

- Tell us about your existing enviro / climate projects
- Join the **C4C** pilot – use the resources and training
- Apply for a **Bronze EnviroClub Award**
- Talk to your families and friends about taking action for climate



# Successful Sustainable Projects

*Ray Siegersma*

*RC Boronia Youth Skills Shed*



# Rotary in a Changing Community

Presented by Ann and Nigel Cousins  
Rotary Club of Frankston Peninsula 2.0



# Where are we now? Let's start with your Club!

**Discuss**

## • **Community**

- Who are the key community groups around you?
- Which ones do you actively work with?

## • **Projects**

- What projects do you run?
- Are community members involved?

## • **Club Experience**

- What makes your club enjoyable?
- Would a visitor feel comfortable?



# Rotary in a Changing Community

*“What you’ve just described is your club’s current **vitality.**”*

---

# CLUB VITALITY

Understanding Rotary Club Engagement Levels

---

## GET INVOLVED

Join us to enhance community connections and membership

Transform Your Club Today!



### DECLINING

Clubs **become inward** focused with **limited community engagement** and membership decline.



### TRANSITIONING

Clubs explore new ideas, fostering an **increase in community connections** and revitalizing their membership.



### MAGNETIC

A thriving club shows strong **community engagement**, with visible projects and a welcoming culture.



# Rotary in a Changing Community

👉 *Rotary works with communities, not for them*

👉 *Relevance drives diversity and growth*

👉 *Disengaged members leave.*

*Engaged members stay.*

*Energised members invite their friends.*



## Case Story – South Sudanese Engagement



**Rotary**  
District 9815



# Rotary in a Changing Community

*[Go to photo gallery](#)*



# What does this mean for us!

Discuss

What stood out?

Where is your club working **for** instead of **with** others?

What is one small opportunity to do this differently?



# Rotary in a Changing Community

👉 *Community + Projects + Club Experience = **Magnetic Club***



# Club Vitality Spectrum: Linear Roadmap to a Magnetic Club





# Rotary in a Changing Community

👉 *“This started small — but our Rotary Club became much more **inclusive of community groups.**”*



# Rotary in a Changing Community

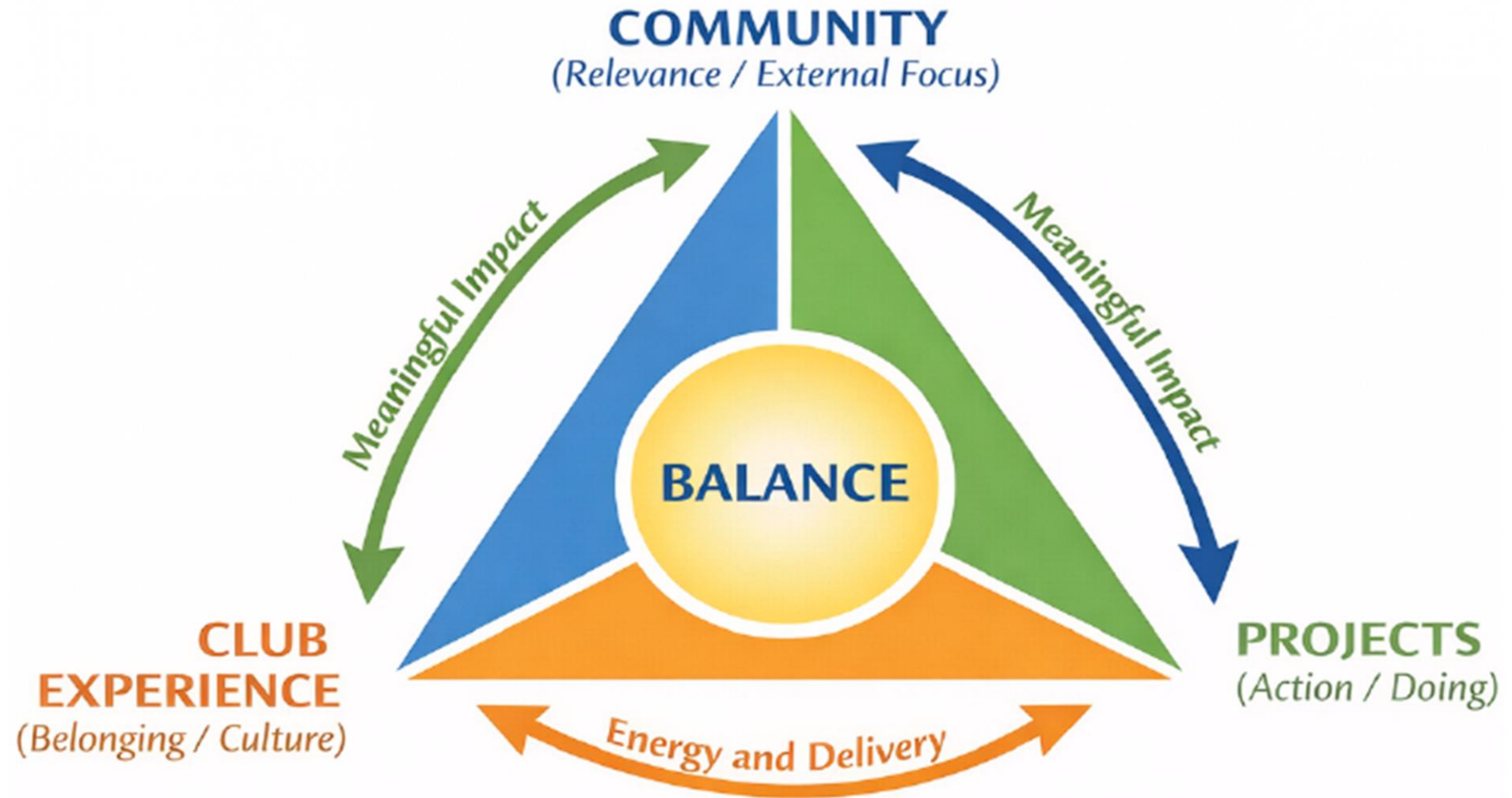
*Rotary works **with** communities, not **for** them*

***Diversity** is an outcome of relevance — **not a target***

***Magnetic clubs** align community, projects, and club experience*



# Mintzberg Club Balance



Strong clubs balance community relevance, meaningful projects, and a great member experience.

**Rotary**  
District 9815



# **Photo Winner**

***David Button***

# PELDS 2026 Photo Competition

By the inventive and creative  
President Elects of District 9815









**CREATE  
LASTING  
IMPACT**

Rotary 

Erwin Clark  
Rotary Club of ...



  
**SILVERWATER RESORT**  
PHILLIP ISLAND, AUSTRALIA

# EMMA'S CLUCKS & DUCKS

- EST -







Club of Monbulk District Inc.

MERRY CHRISTMAS

Murray Nagle  
Hannah Skehan OPTIC

Locally owned  
and trusted services in the  
latest diagnostic technology  
Advances in eye health care  
More than a vision check  
Optical & contact lens services





NO SOMERSAULTS OR  
INVERTED MANOEUVRES  
CAUTION WHEN WET

NO JUMPING  
NEAR

Nutmeg

Cinnamon

Clove

Star Anise

Paprika

Ginger

Rotary's Old Spice Girls









Rotary Peninsula 2

Rotary

HOSE REEL

Rotary District 915  
CREATE LISTING IMPACT







What do members in your club look like?

- 1. Members who are fully engaged with their club
- 2. Members who are not engaged with their club
- 3. Members who are engaged with their club but not with their club
- 4. Members who are engaged with their club but not with their club

What do members in your club look like?

At your next discussion and note

- 1. Members who are fully engaged with their club
- 2. Members who are not engaged with their club
- 3. Members who are engaged with their club but not with their club
- 4. Members who are engaged with their club but not with their club





GLENDA  
BLESSIE  
Surrey

President Elect, Llangennech District, 2017  
Development Services  
C. M. C. M.  
C. M. C. M.  
C. M. C. M.

President Elect, Llangennech District, 2017  
Development Services  
C. M. C. M.  
C. M. C. M.  
C. M. C. M.

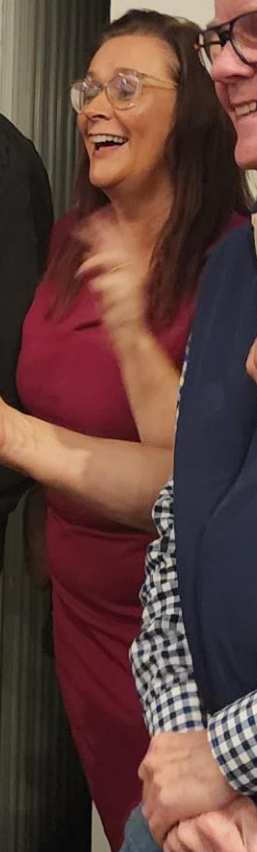




**SERVING THE  
COMMUNITY**

Wf. Sten...  
Robert philip...  
P... C...  
D... B...  
[Diagram]

  
EVERWATER RESORT  
PHILIP ISLAND, AUSTRALIA









# EMMA CLUCK AND THE SPANGLES

## - THE DUCK ROCK & ROLL TOUR



Do we need a light-hearted themed quote?

- **"Emma Cluck: Ruling the Roost in 9815!"** – A fun way to acknowledge her leadership of District 9815.
- **"Something to Crow About!"** – Perfect for celebrating the district's wins and service projects.
- **"No Fowl Play, Just Rotary Service!"** – A lighthearted promise for her term.
- **"Flocking Together for Good!"** – Emphasises the community and social aspect of the club.
- **"Emma Cluck: Not Your Average Chick!"** – Highlights her unique, fun-loving approach to the DG role

Now for the finalists

**SERVING THE  
COMMUNITY**

Wf. Sten...  
Robert philip...  
P... C...  
D... B...  
[Diagram]

# EMMA CLUCK AND THE SPANGLES - THE DUCK ROCK & ROLL TOUR







NO SOMERSAULTS OR  
INVERTED MANOEUVRES  
CAUTION WHILE



Nutmeg

Cinnamon

Clove

Star Anise

Paprika

Ginger

Rotary's Old Spice Girls



Who knew we have so much talent  
in our District.



# **Pulse of the Weekend**

***DGN Murray Wilson***

Rotary  
District 9815



Lunch at 12.30pm