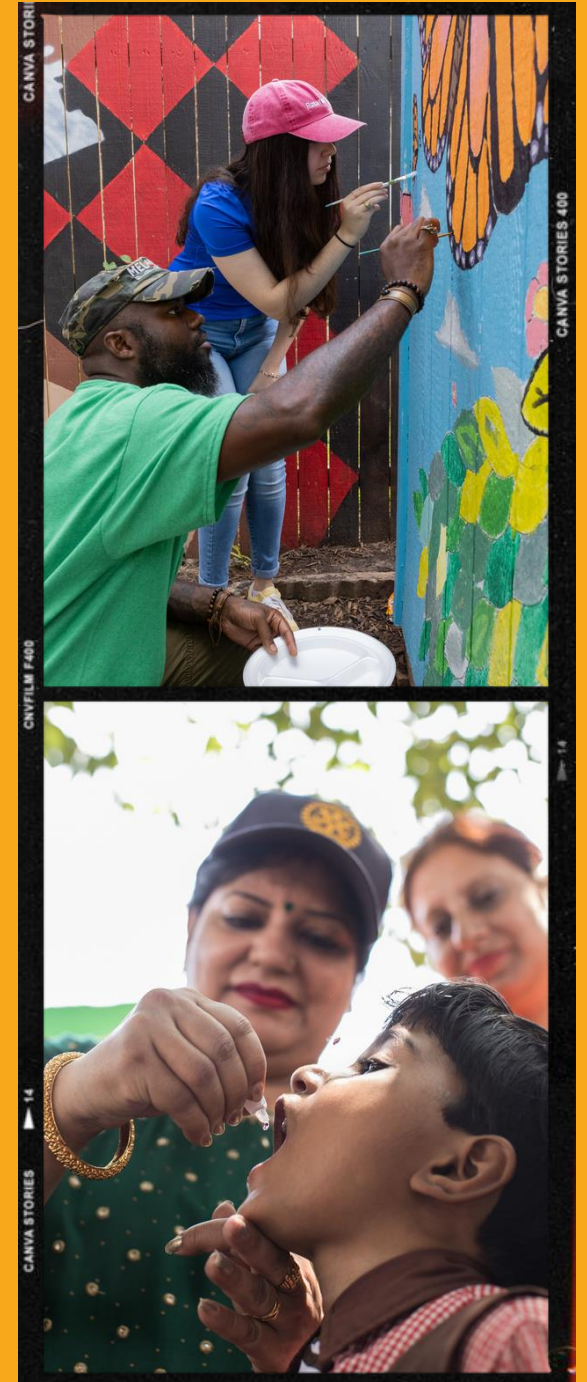




WELCOME TO ROTARY

DISTRICT 5870 - CENTRAL TEXAS



TODAY'S TEAM



Jim Henry

PDG 2019-20, DMC
Northwest Austin



Dian Edwards

PDG 5630 2012-13
Austin North Metro Passport



Todd Smith

DGN
Georgetown, Austin

TODAY'S AGENDA



ROTARY INTERNATIONAL

- What Is Rotary?
- Rotary's Guiding Principles
 - Key Areas of Focus
 - Structure of Rotary
- Membership Enhancements

DISTRICT 5870 CENTRAL TX

- Fitting In to the Bigger Picture
 - Organizational Structure
 - Where Your Support Goes
- Maximizing Your Membership

OUR BEGINNINGS

1905 – Paul Harris organizes first meeting, which then “rotates” among members’ offices

1907 – Rotary Club of Chicago provides a public toilet outside City Hall, Rotary’s first community service project

1917 – The Rotary Foundation (TRF) was established



THE OBJECT OF ROTARY



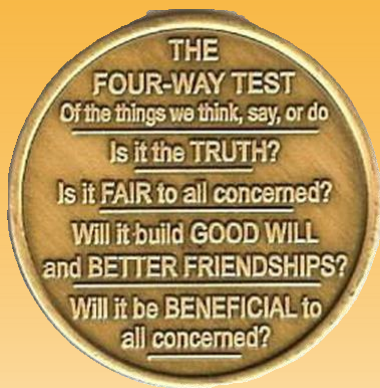
First: Developing friendships
for service

Second: High ethical standards
in business and professions

Third: Applying service in each
Rotarian's life, business and
community

Fourth: Advancing international
understanding, goodwill and
peace

THE FOUR* WAY TEST



Of the things we think, say or do...

First, is it the **TRUTH**?

Second, is it **FAIR** to all
concerned?

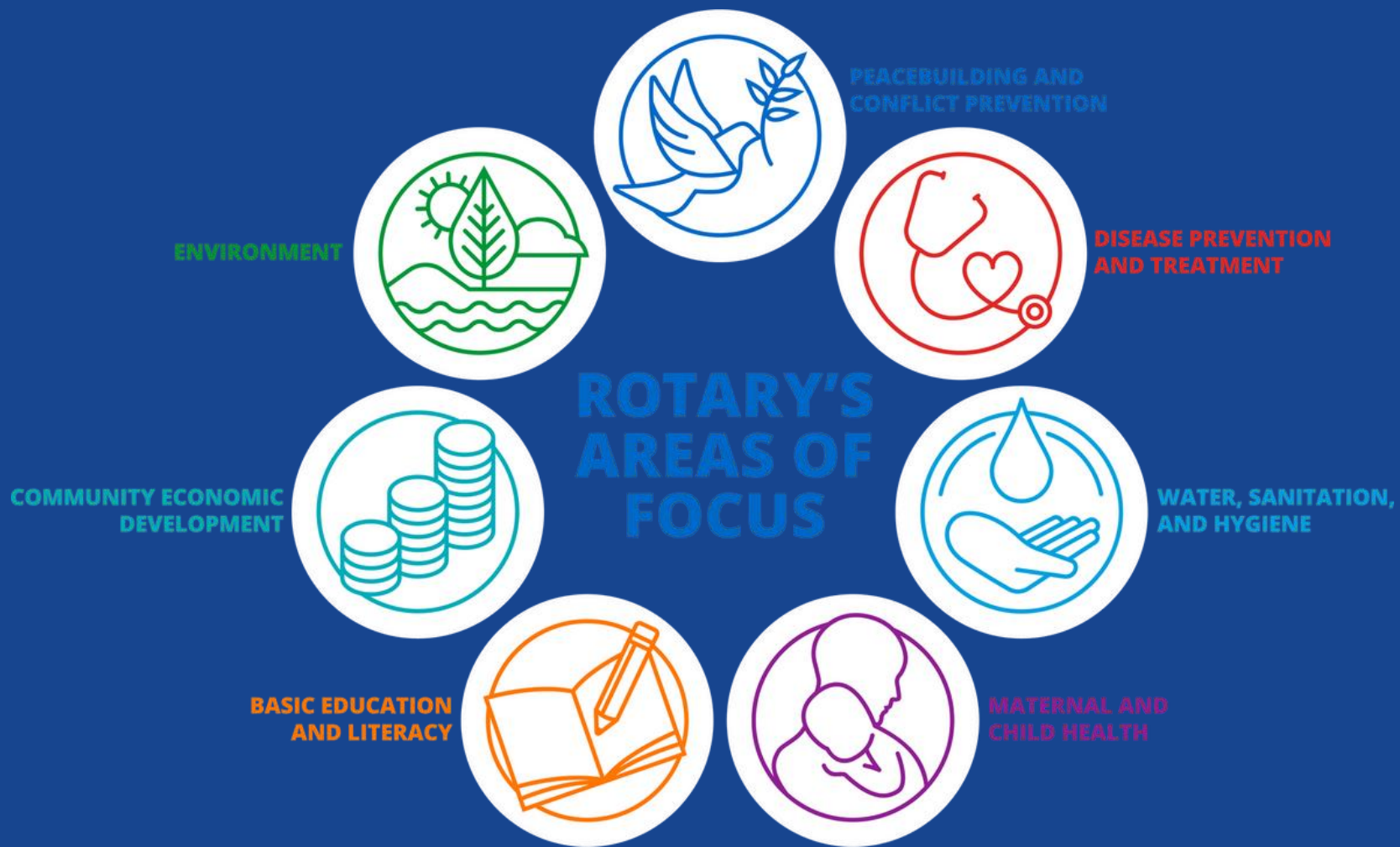
Third, will it build **GOODWILL**
and **BETTER FRIENDSHIPS**

Fourth, will it be **BENEFICIAL** to
all concerned

ROTARY'S VISION STATEMENT



TOGETHER WE SEE
A WORLD WHERE
PEOPLE UNITE AND
TAKE ACTION TO
CREATE LASTING
CHANGE ACROSS
THE GLOBE, IN OUR
COMMUNITIES, AND
IN OURSELVES.



AREAS OF FOCUS

ROTARY'S STRUCTURE

Rotary International is governed by a Board of Directors comprised of the International President, the President-Elect, the General Secretary, and the 17 Zone Directors

Rotary Int'l /
The Rotary Foundation

529 Districts

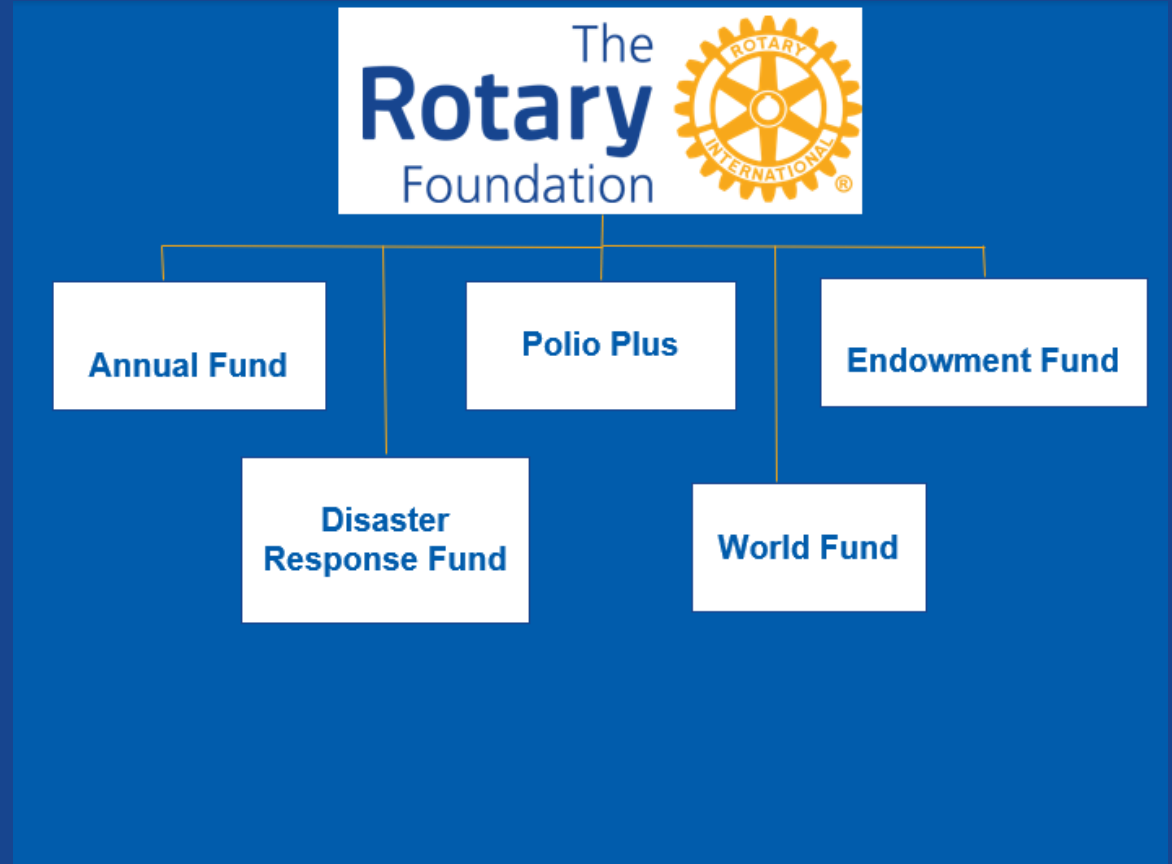
46,000 clubs

1.4 million members

THE ROTARY FOUNDATION

The Rotary Foundation is the philanthropic (501c3) arm of Rotary International.

It is governed by a separate group of Trustees distinct from the Board of Directors who govern Rotary International.



**WITH YOUR
SUPPORT,
THE ROTARY
FOUNDATION
IS “THE FUEL
TO MAKE A
DIFFERENCE”**



The Rotary Foundation transforms your gifts into service projects that change lives both close to home and around the world.

Since it was founded more than 100 years ago, over \$4 billion has been spent on life-changing, sustainable projects.



Interact



High School-aged clubs. In our District we also have EAFK for K-8 grades.

Rotaract



College, Community, or Cause-Based clubs. We also have E-Club virtual club in our District.

Rotary Fellowship Groups

Interest-based groups without geographic constraints to build global friendships.

Rotary Action Groups

Cause-and-Interest based groups that provide expertise in the development of global and district service projects.

OTHER “FLAVORS” OF ROTARY

There's plenty more to Rotary than just what happens in your Club!

Friendship Exchanges

Adult learning and travel opportunities to learn about other cultures, customs, and lifestyles

Youth Exchanges

Youth educational programs to travel abroad and learn about other cultures, customs and lifestyles.

Global and Peace Scholars

Competitive academic scholarship programs to foster future generations aligned with Rotary's Areas of Focus.

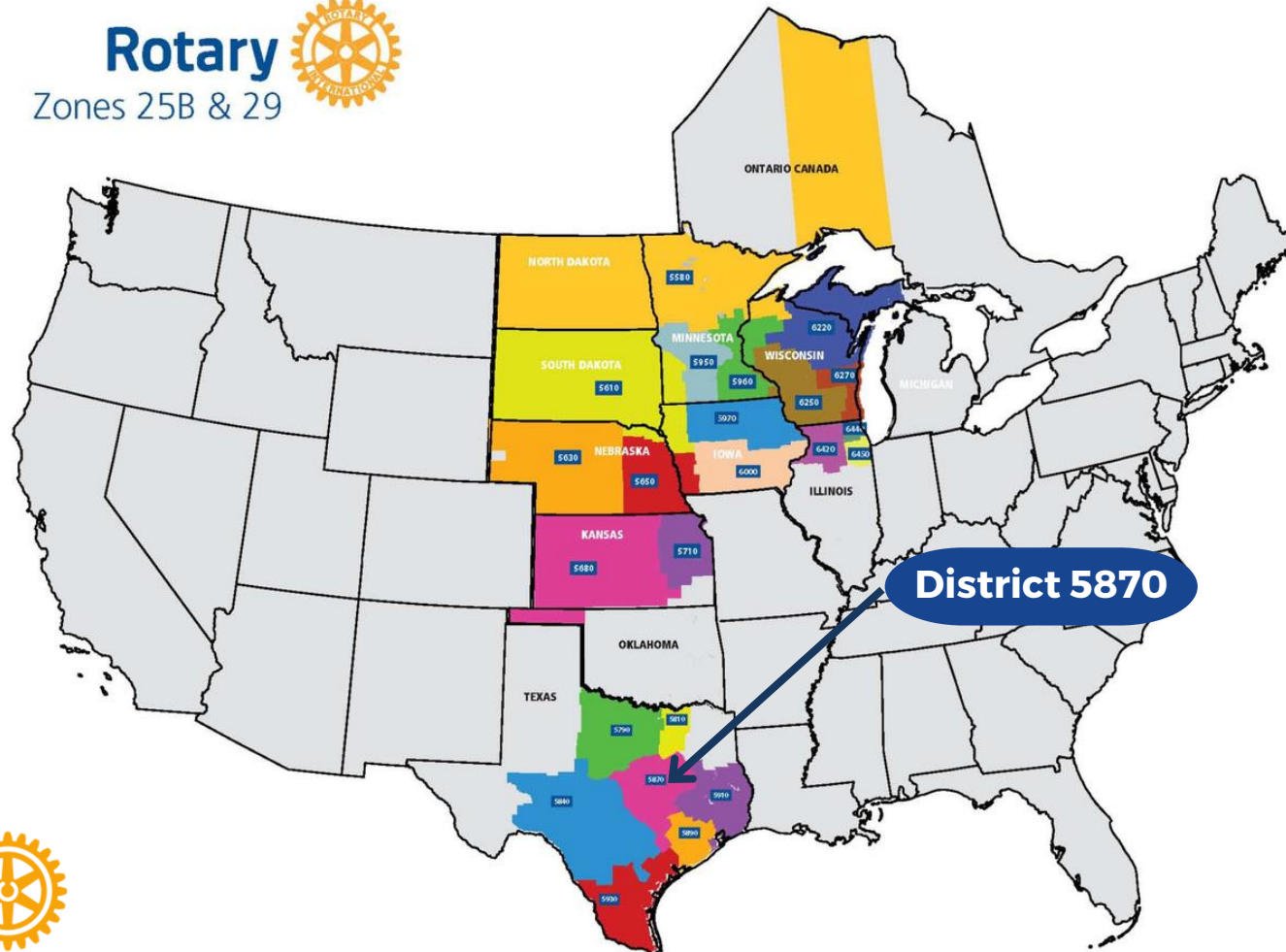
Serve on District Committee(s)

Have greater impact outside your club by serving on one or more of the committees that exist solely to serve our clubs and members.

**GROW
WITH
ROTARY &
EXPAND
YOUR
SPHERE**

DISTRICTS & ZONES

Rotary
Zones 25B & 29



District 5870

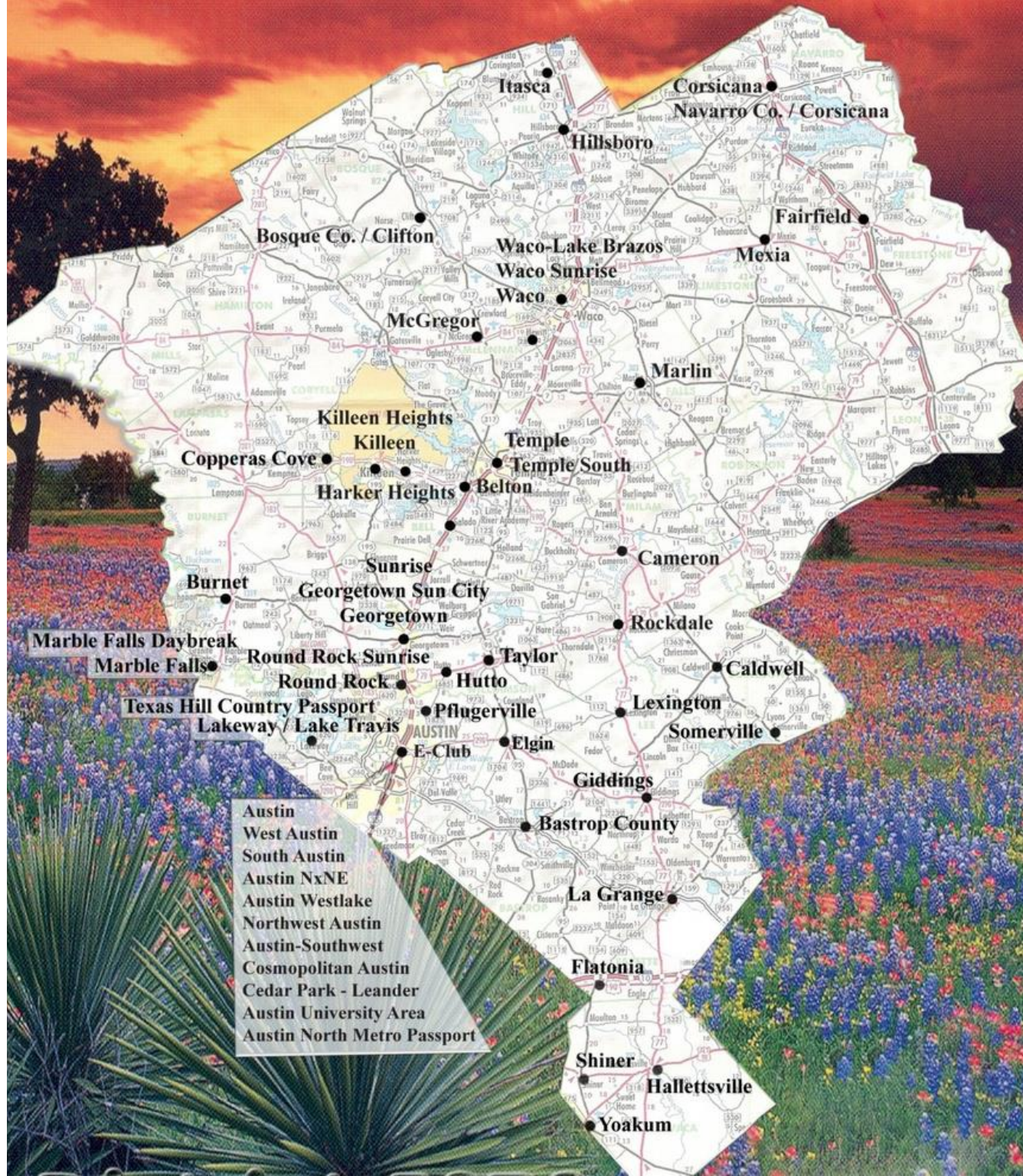
Rotary
District 5870
Central Texas



District 5870 Central Texas is in Zone 25B

ROTARY CLUB LOCATIONS

Rotary 
District 5870
Central Texas

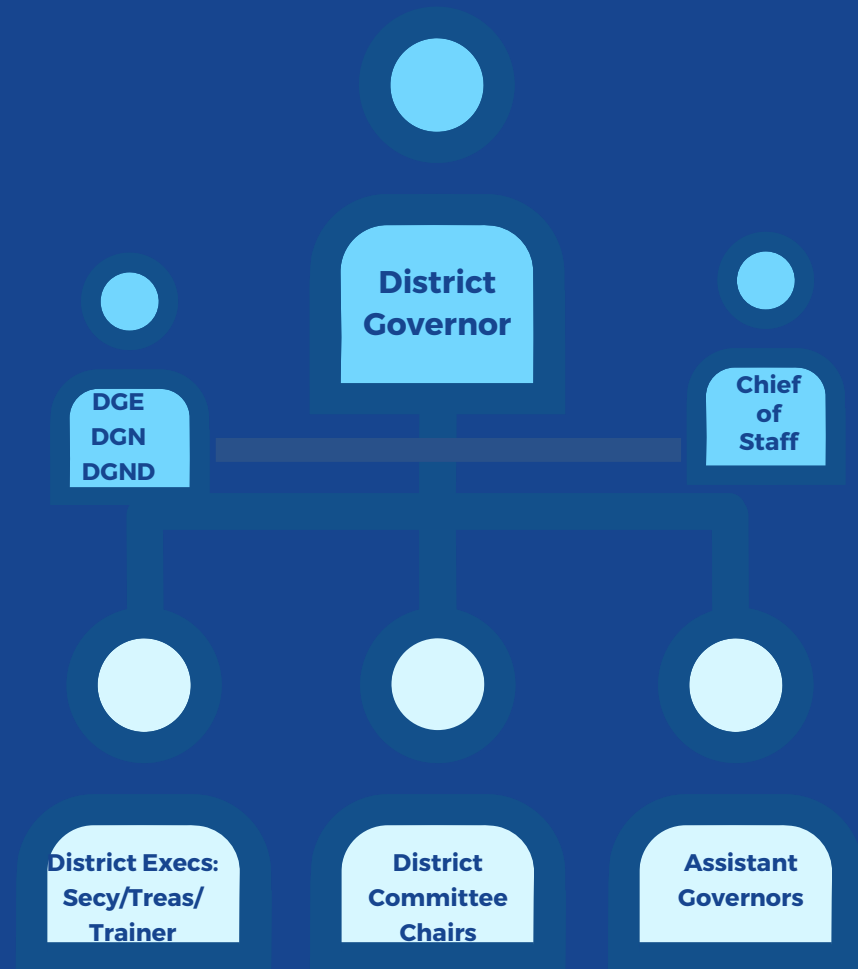


DISTRICT WEBSITE



YOUR DISTRICT LEADERSHIP TEAM

Serving
Alongside
You



YOU'RE INVITED!!

District
events are
open to
ALL
members

**District
Learning
Forums**

**Foundation
Gala**

**Club
Leader
Training**

**District
Conference
of Clubs**

YOUR CONTRIBUTIONS TO THE ANNUAL FUND

of the Rotary
Foundation
help support
these District-level
Service
opportunities

a

**District Assistance
Program (DAP)
Grants**

b

**Global Grants &
Scholarships**

c

**Career & Technology
Educational
Scholarships (CTES)**

d

**District Service
Projects**



FOUNDATION RECOGNITION

HOW TO MAXIMIZE YOUR MEMBERSHIP

- Attendance / Engagement
- Mentoring and/or service to others
- Establish a MyRotary.org account
- Support The Rotary Foundation
- Don't just attend meetings...participate and contribute to your Club's activities and projects







District 5870 Central Texas

