

WELCOME TO EMPOWERING GIRLS, FAMILIES & COMMUNITIES

Peer-to-Peer Session
Rotary Zone 26/27 Institute
San Diego, California
November 9, 2023



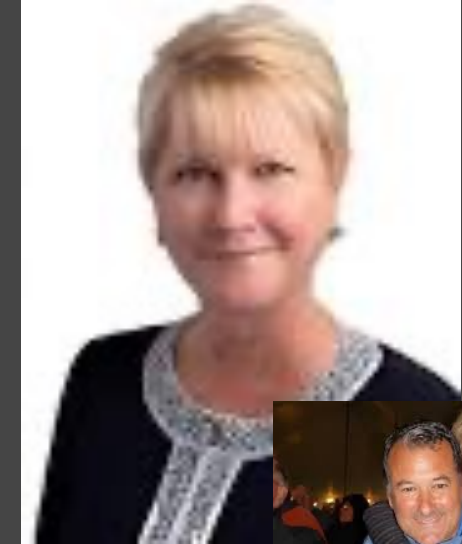
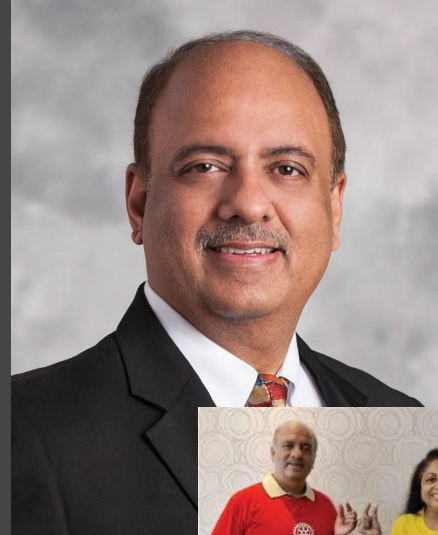
CREATE HOPE
in the WORLD

TODAY'S PEER-TO-PEER TOPICS

- 🌀 Overview of the evolving role of the Rotary International Empowering Girls Presidential Initiative
- 🌀 Resources available for clubs and districts Rotary Action Groups, Rotary Foundation Cadre advisors, and Rotary Partners, Youth Protection, Rotary Showcase
- 🌀 Next Steps



The legacy of empowering girls



Presidential initiatives



GIRLS' EMPOWERMENT INITIATIVE 2021-2024



Opportunity for Rotary clubs worldwide to engage in service projects that focus on the needs of girls, including:

- Health and wellness
- Education
- Safety and well-being
- Economic development, and

To provide resources to enable girls to become agents for positive change

- In their own lives
- In their families
- In their communities

CHALLENGES GIRLS FACE



Girls across the world continue to face significant challenges.

- Traditional cultural expectations.
- Early marriage.
- Teen pregnancy.
- Exploitation and abuse, including human trafficking and gender-based violence.
- Lack of access to menstrual hygiene products and gender specific bathroom facilities at school.
- Lack of access to education.
- Lack of access to reproductive information and healthcare.
- Malnutrition, obesity and eating disorders.
- Mental health challenges.



EMPOWERING GIRLS



How Clubs Can Participate

- Engage in a project that addresses the needs of girls and enhances the quality of their lives.
- Implement a current club project through the lens of empowering girls.
- Use Rotary resources, such as Rotary Action Groups, Peace Fellows and The Rotary Foundation Cadre, to develop and implement the project.
- Monitor and measure the impact of the project.
- Tell the story of your project in the community, on social media and in Rotary Showcase on the Rotary website.

Resources

- 🌀 Opportunities
- 🌀 Rotary Action Groups
- 🌀 The Cadre of Technical Advisers
- 🌀 Rotary Showcase
- 🌀 Partnerships



RESOURCES

PRESIDENTIAL INITIATIVES

<https://my.rotary.org/en/who-we-are/office-of-the-president/presidential-initiatives>

<https://zone2627.org/empowering-girls/>



Resources for clubs and districts

Learn more about empowering girls:

- [Empowering Girls Overview](#)
- [Empowering Girls Brochure](#)
- [Empowering Girls Presentation](#)
- [Empowering Girls Talking Points](#)
- [Rotary Youth Protection Guide](#)
- [How to upload activities in Rotary Showcase](#)
- [Rotary Showcase – Frequently Asked Questions](#)

RESOURCES

FINDING WAYS TO PARTICIPATE



PROJECTS BY AREA OF FOCUS 2022-23	
Basic education and literacy	786
Community economic development	578
No Area of Focus selected	714
Disease prevention and treatment	446
Maternal and child health	309
Peacebuilding and conflict prevention	247
Water, sanitation, and hygiene	137
Environment	191

RESOURCES

ROTARY ACTION GROUPS BY AREAS OF FOCUS

Fighting disease

[Addiction Prevention](#)
[Alzheimer's/Dementia](#)
[Blindness Prevention](#)
[Blood, Tissue, and
Organ Donation](#)
[Diabetes](#)
[Family Health/AIDS
Prevention](#)
[Health Education and
Wellness](#)
[Hearing](#)
[Hepatitis Eradication](#)
[Malaria](#)
[Mental Health
Initiatives](#)
[Multiple Sclerosis](#)

Promoting peace

[Peace](#)
[Refugees](#)
[Slavery Prevention](#)

Supporting education

[Basic Education and
Literacy](#)

Providing clean water and sanitation

[Menstrual Health
and Hygiene](#)
[Water, Sanitation
and Hygiene](#)

Saving mothers and children

[Clubfoot](#)
[Reproductive
Maternal and Child
Health](#)

Protecting the environment

[Endangered Species](#)
[Environmental
Sustainability](#)

Growing local economies

[Community Economic
Development](#)
[Disaster Assistance](#)

Action groups that work in more than one area of focus

[Food Plant
Solutions](#)

RESOURCES

START A NEW ROTARY ACTION GROUP

How to start a Rotary Action Group

- Read the [Guide for Prospective Action Groups](#).
- Find others interested in the topic:
 - [Join a discussion group](#) or [start a new one](#).
 - Use Rotary's presence on [Facebook](#), [Twitter](#), and [LinkedIn](#) to promote your idea.
 - Attend the [Rotary International Convention](#) or other [Rotary events](#).
 - Reach out to district leaders in other countries to build membership.



Resources & reference

- [Rotary Action Groups flier](#)
- [Rotary Action Groups directory](#)
- [Rotary Action Groups annual report](#)
- [Rotary Action Groups presentation](#)
- [Rotary Action Groups Standard Bylaws](#)
- [Visual Identity Guidelines for Rotary Action Groups](#)
- [Rotary Action Groups Office Reporting Forms](#)
- [Work with Rotary Experts](#) (PDF)





RESOURCES



Mediators
Beyond Borders
INTERNATIONAL



Institute for Economics and Peace



ROTARY



Peace
Corps



Partners



ShelterBox

Resources Network Advisers



WORK WITH ROTARY EXPERTS

Consult a Rotary expert for assistance with your service project. Connect with members of **The Rotary Foundation Cadre of Technical Advisers** and **Rotary Action Groups** through your **District Resource Network**. Each group of Rotary experts can help your project succeed. Find out more about what each group offers.

CADRE OF TECHNICAL ADVISERS

WHO THEY ARE

Cadre members are Rotarians around the world who have professional experience and expertise in Rotary's areas of focus or financial auditing. Cadre members receive online and in-person training from Foundation staff and guidance and oversight from Rotary staff and Cadre leadership.

HOW THEY CAN HELP

- ▶ Advising Rotary members who are planning or working on Rotary Foundation grant projects, especially on topics like community assessments, sustainability, and financial management.
- ▶ Establishing monitoring and evaluation plans that safeguard Foundation funds, reviewing global grant applications, and evaluating projects on behalf of The Rotary Foundation Board of Trustees.

ROTARY ACTION GROUPS

Rotary Action Groups are independent, Rotary-affiliated organizations whose members have expertise in a particular subject that may include or relate to one of Rotary's areas of focus.

- ▶ Advising about how to conduct community assessments.
- ▶ Making recommendations about how to involve community stakeholders.
- ▶ Giving advice about preparing a project plan and budget.
- ▶ Guiding the creation of a monitoring and evaluation plan.
- ▶ Offering direction on identifying partners and funding resources.
- ▶ Gathering and distributing resources and the best practices on a specific topic.

DISTRICT INTERNATIONAL SERVICE CHAIR

WHO THEY ARE



District international service chairs encourage dialogue about international service and motivate clubs to get involved in international service and plan higher quality, sustainable projects and grants.



Manage and connect clubs with regional coalitions of experts (**District Resource Networks**) to serve as project mentors. Recruit and leverage local TRF Cadre and Rotary Action Group members to join the **District Resource Network**.

HOW THEY CAN HELP

- ▶ Connecting clubs with the District Resource Network of local subject matter and project experts.
- ▶ Identifying resources to support clubs with their service goals, projects, or global grants.
- ▶ Helping clubs find international project partners.
- ▶ Publicizing success stories and promoting the best practices.

ROTARY YOUTH PROTECTION



ROTARY YOUTH PROTECTION GUIDE



AWARENESS AND VISIBILITY



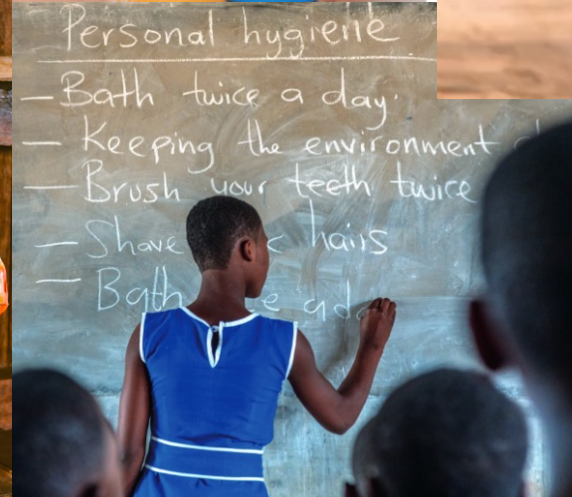
Rotary Showcase Girls' Empowerment Campaign

Top 10 Countries Listing Projects

2022-2023: 3,408

India	959
Brazil	923
Philippines	336
Thailand	231
Nigeria	193
Bangladesh	84
Mexico	74
Ecuador	66
Pakistan	51
Bolivia	39

ROTARY SHOWCASE

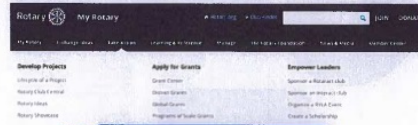


HOW TO ADD A PROJECT TO ROTARY SHOWCASE

my.rotary.org/showcase



1



To add your project, sign in to My Rotary and under **Take Action**, click **Rotary Showcase**.

2



Click **ADD A NEW PROJECT**.

3

Enter information about your project.



EMPOWERING GIRLS PROJECTS IN ROTARY SHOWCASE

Frequently asked questions

- 1. Who can post a project to Rotary Showcase?**
Rotarians, Rotary club executive secretaries, and Rotaractors can post projects to Rotary Showcase. To do so, they need a My Rotary account.
- 2. If one club member posts a project, can someone else edit it?**
Club presidents are automatically able to edit their clubs' projects. If anyone else needs to edit a project, the president or the person who posted it can add that person as a project contact, and they will then be able to edit it.
- 3. Do projects have to be completed to be posted in Showcase?**
No, they do not. You can post a project that is still underway.
- 4. How long does it take to enter a project in Showcase?**
Not long at all. It's helpful to gather basic information, such as the project's name and a description, as well as the funding sources and timeline, before you begin.
- 5. How can I post a project?**
Sign in to My Rotary. Under **TAKE ACTION**, hover your cursor over **Develop Projects**, then choose **Rotary Showcase**. In Rotary Showcase, click the **ADD A NEW PROJECT** button and enter the information about the project.



RESOURCES ROTARY SHOWCASE “HOW TO...”



CREATE HOPE
in the WORLD

MOVING FORWARD...

- 🌀 Encourage clubs to **engage** in new or integrate activities or provide resources that enhance the quality of girls' lives so they can empower themselves
- 🌀 Use **networks** such as Rotary Action Groups, Peace Fellows, the Rotary Foundation Cadre and Partners to develop activities and identify needed resources
- 🌀 Connect with club and district leaders to collaborate and **share** informational resources
- 🌀 Keep **Youth Protection** at the forefront and don't forget to use the Guide and classes in Learning Center
- 🌀 Encourage clubs to enter their activities in the Girls Empowerment campaign in **Rotary Showcase**
- 🌀 **Celebrate** Success Stories in the community and through social media



THANK YOU FOR JOINING US FOR THE PEER-TO-PEER SESSION ON **EMPOWERING GIRLS**



Jo Crenshaw
PDG, District 5100
Rotary Club of Oregon City
crenshawjo2021@gmail.com

Your Zone 26/27 Empowering Girls Ambassadors



**CREATE HOPE
in the WORLD**



Sandy Matsui
PDG, D5000 Hawaii
Rotary Club of Kane'ohe
sandy.matsui@gmail.com