

YOUTH PROTECTION POLICIES & RESOURCES

Lindsay Griswold

Supervisor for Youth Exchange and Youth Protection

Rotary International

Evanston, Illinois, USA



NORMS FOR DISCUSSION



Take a break if
you need to



Respect
confidentiality



Contact us
via e-mail

youthprotection@rotary.org



STAFF SUPPORT

YOUTH PROTECTION TEAM



Jessie Dunbar-Bickmore
Manager,
Programs for
Young Leaders
and Alumni
Relations



Lindsay Griswold
Supervisor,
Youth Exchange
and Youth
Protection



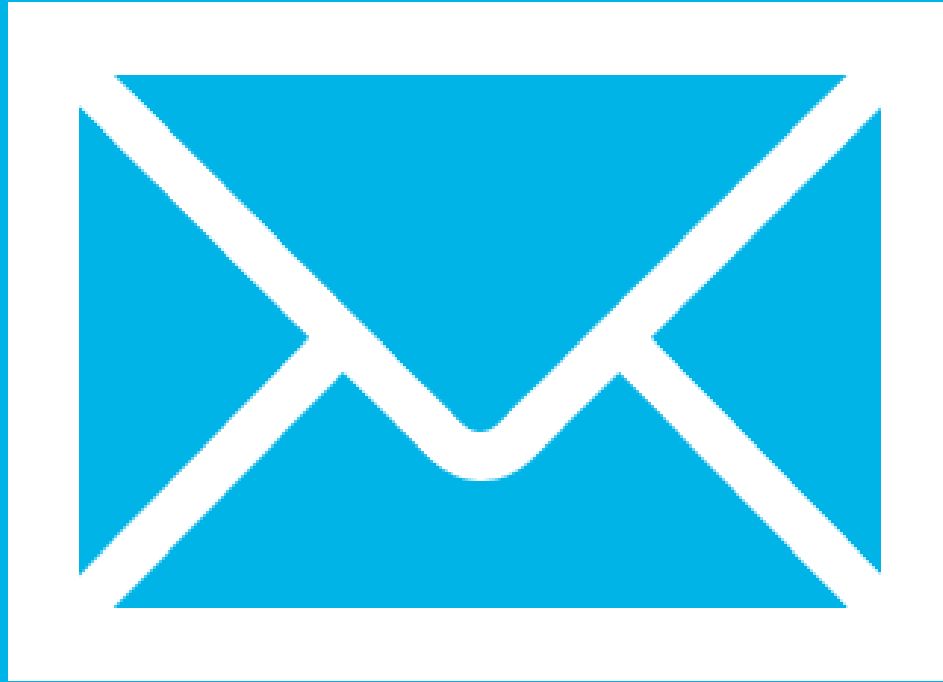
James Dittrich
Youth Exchange
and Youth
Protection
Specialist



Logan Johnson
Youth Exchange
Promotions and
Engagement
Specialist



Jessica Borrego
Youth Exchange
Compliance and
Reporting
Specialist



youthprotection@rotary.org



PUBLICATIONS, COURSES, & RESOURCES

ROTARY YOUTH PROTECTION GUIDE



ROTARY YOUTH PROTECTION GUIDE



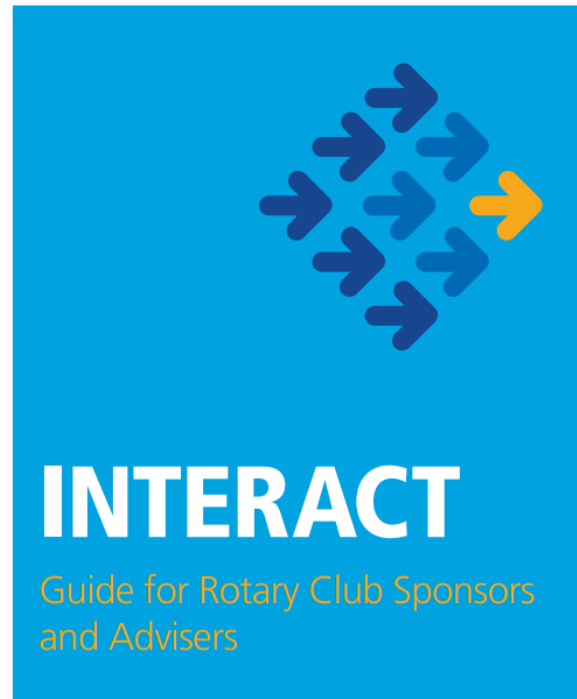
RI BOARD DECISION, MARCH 2021

- Youth Exchange program suspended through June 2022
- Districts can recruit and train students and host families for a 2022-23 exchange in the meantime
- Board reserves the right to review decision at all subsequent meetings

ALLEGATION REPORTING – BE NEUTRAL AND RESPONSIBLE

- Listen attentively and stay calm.
- Assure privacy but not confidentiality.
- Get the facts, but don't interrogate.
- Be nonjudgmental and reassure.
- Document the allegation.

YOUTH PROGRAM HANDBOOKS



**ROTARY YOUTH
LEADERSHIP AWARDS**



LEARN.ROTARY.ORG



Search content in the platform



Preventing and Addressing Harassment

ID: E-J0EXXV

Language: English - Duration: 45m - ★★★★★

ABOUT THIS COURSE

CONTENT

This course reviews Rotary's policy on a harassment-free environment. It defines harassment, provides steps for those being harassed, and for those receiving allegations. Take this course to learn how you can create a harassment-free environment in your club.

Updated February 2020

LEARN.ROTARY.ORG



Search content in the platform



Protecting Youth Program Participants

ID: E-GVZYQ0

Language: English - Duration: 30m - ★★★★★

ABOUT THIS COURSE

CONTENT

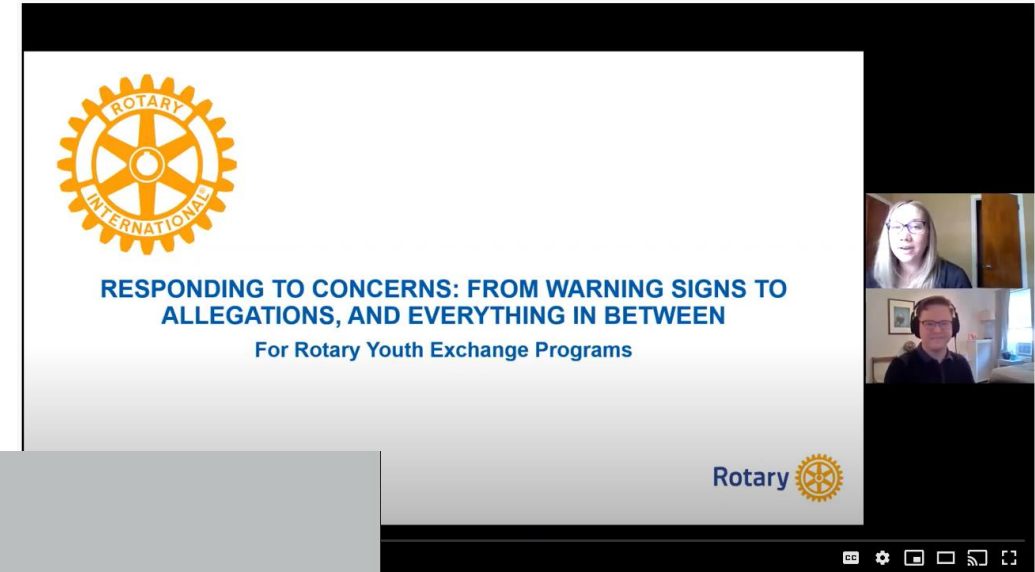
Effective youth protection policies may not prevent all incidents, but they can support the young people participating in Rotary programs and reduce negative outcomes. If you're a club president or Rotarian who works with youth in any way, this module will help you to apply and address youth policies in your club or district.

Updated March 2020

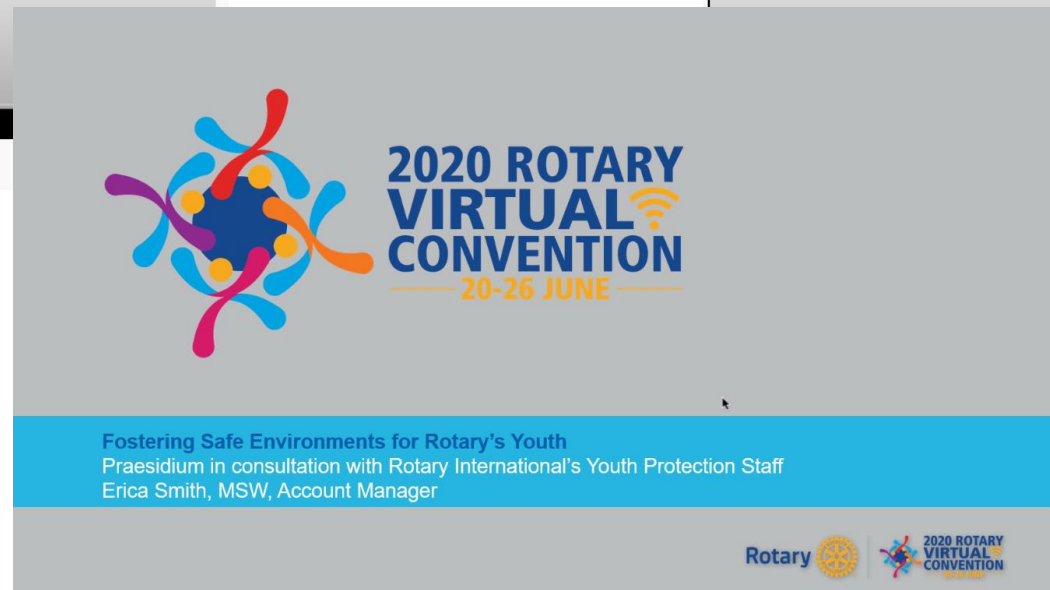
2020 YEO VIRTUAL POSTCONVENTION RESOURCES



#yeopostcon2020
Youth Protection | Strengthening your volunteer screening and selection process



ns, and everything between



DIVERSITY, EQUITY, & INCLUSION

rotary
youth
exchange



DIVERSITY, EQUITY, AND INCLUSION IN ROTARY YOUTH EXCHANGE:

Supporting Lesbian, Gay, Bisexual, Transgender, and Queer (LGBTQ+) Exchange Students

CRISIS MANAGEMENT



ENGLISH (EN)

DEVELOPING A CRISIS MANAGEMENT PLAN

A crisis management plan is a carefully developed set of protocols designed to help individuals deal effectively with real and perceived emergency situations when they arise. A real emergency is one that poses an immediate danger, while a perceived emergency is a potentially risky situation that may develop into a dangerous situation. It is essential that districts are prepared to respond to both real and perceived emergencies, as either can turn into a crisis situation, posing serious risks to student and volunteer health, safety and security – as well as the district's reputation.

Learn more about how to get started, consider best practices, and review sample forms.

[Getting Started](#)

[Best Practices](#)

[Sample District Crisis Management Plan](#)

[Appendix A – Sample District Contact List and Crisis Notification Protocols](#)

[Appendix B – Sample Debriefing Questionnaire](#)

YOUTH PROTECTION WEBPAGE – NEW!

Rotary  My Rotary

Donate

Join



HOME | EXCHANGE
IDEAS

TAKE
ACTION

LEARNING &
REFERENCE

MANAGE | THE ROTARY
FOUNDATION

NEWS &
MEDIA

MEMBER
CENTER

Youth Protection



Rotary is committed to fostering environments that are safe and positive for young people and free from discrimination and physical, emotional, and sexual abuse.

Statement of Conduct for Working With Youth

Rotary International strives to create and maintain a safe environment for all youth who participate in Rotary activities. To the best of their ability, Rotary members, their partners, and other volunteers must safeguard the children and young people with whom they come into contact and protect them from physical, sexual, and psychological abuse.

What do you want to do?

I want to...



REPORT A YOUTH PROTECTION CONCERN

Rotary takes all youth protection concerns seriously.

Learn more about our reporting policies or make a report.

Rotary's approach to preventing abuse

The safety and well-being of young people and youth program participants are Rotary's highest priority. Our comprehensive approach to youth protection includes:

- No tolerance for abuse or harassment of young people
- Policies that prevent misconduct and outline how to respond to grooming behaviors and abuse that involve youth and other program participants
- Mandatory youth protection training for governors-elect
- A dedicated and trained staff that uses a trauma-informed approach when receiving and responding to reports of sexual abuse or harassment
- A certification process that requires Rotary districts involved in Rotary Youth Exchange to have:
 - Student, family, and volunteer training in abuse prevention
 - Volunteer screening that includes an application, criminal background check, and reference checks
 - A process for reporting allegations of abuse and harassment to Rotary and local law enforcement
 - District-specific youth protection policies
 - On-site evaluations (audits) that are conducted by Rotary staff members

Youth protection resources for members

Rotary provides comprehensive resources for clubs and districts that participate in youth programs so they can confidently implement our youth protection policies and act to prevent abuse and harassment:

- [Rotary Youth Protection Guide](#)
- [Protecting Youth Program Participants](#) (online course)
- [Electronic and Online Safety Considerations](#)
- [Developing a Crisis Management Plan](#)
- [Rotary Code of Policies, section 2.120.](#)

ONLINE REPORTING FORM – NEW!

Submit a youth protection report

The safety and well-being of our young people and youth program participants are Rotary's highest priority and Rotary takes all youth protection concerns seriously. Should you have questions or concerns about making a report, we encourage you to refer to our [Frequently Asked Questions](#), and you can always contact us via phone or email if you need advice or assistance (see below for more information).

In case of emergency, contact local law enforcement or emergency services immediately.



Report Online

Submit a report online in your native language, with the option to report anonymously.



Call Us

Call +1 866-976-8279 between 08:00-16:00 Chicago time (UTC-5 or UTC-6) and ask to speak to Rotary's Youth Protection staff. Our staff members are experienced and trained in receiving reports of abuse or misconduct that involves youth, and each situation will be handled with care and confidentiality. If you call outside of normal business hours, you can leave voicemail for one of our Youth Protection staff members who will contact you as soon as possible.



Email Us

Email your questions, concerns, or reports to youthprotection@rotary.org, which will be carefully and confidentially handled by our experienced Youth Protection staff.

ELECTRONIC AND ONLINE SAFETY CONSIDERATIONS



OVERVIEW

- Why is online safety “by design” important to prevention
- What are the key areas to address in both prevention and responding to online safety
- Common threats to online safety
- Tips for updating your policies to address online safety

ONLINE SAFETY “BY DESIGN”

- Select online tools that already have built-in controls for monitoring chats, limiting file sharing, and allow the administrators to establish what participants can and cannot do
- Only participate in activities that are safe, inclusive, and transparent
- Limit activities that require participants to use other tools, like social media, that cannot be closely monitored

PREVENTION

- Establishing boundaries and expectations up-front.
- Clearly communicating acceptable and unacceptable behaviors with participants, families, and volunteers
- Training

RESPONDING

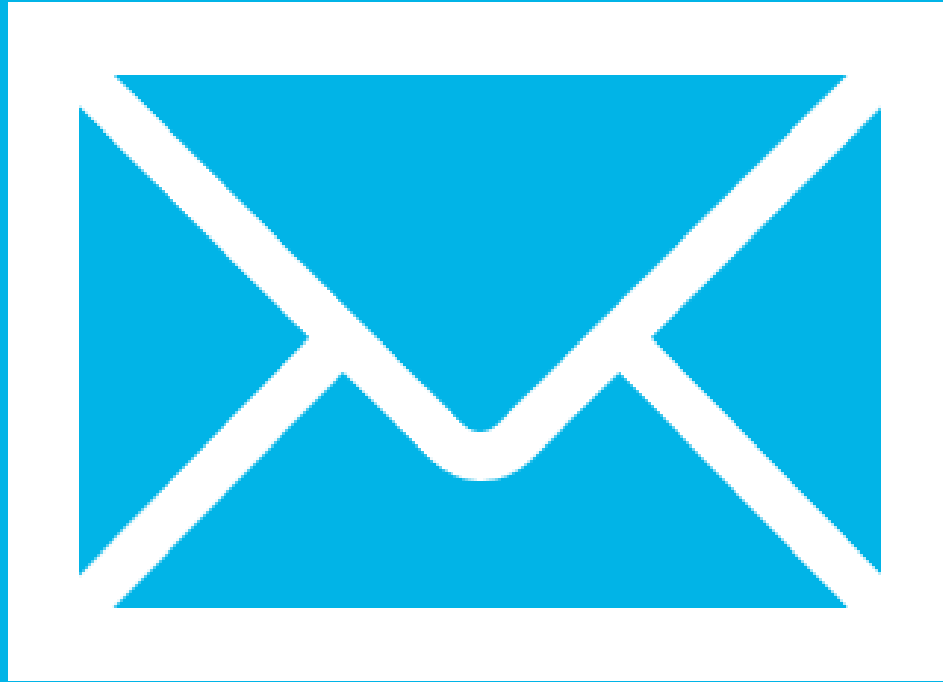
- Spotlight and interrupt inappropriate behavior
- Follow-up with all parties and re-establish expectations and boundaries
- Report any concerning behaviors to Rotary or law enforcement as necessary

COMMON THREATS TO ONLINE SAFETY

- Online grooming
- Cyberbullying
- Reputational risks
- Peer pressure

TIPS FOR UPDATING YOUR POLICIES

- Review your programs and their unique risks
- Discuss how to create programs that include online safety “by design”
- Write down and communicate specific appropriate and inappropriate behaviors
- Develop training materials and a schedule



youthprotection@rotary.org



QUESTIONS?

