



# **Rotary District 9350 Food Gardens Webinar**

## **The role of Fruit trees in the Nutritional school nutrition programmes**



# AGENDA

- 16:55     **The role of Fruit trees in the Nutritional school nutrition programmes**
- 17: 00     Welcome – Anton Lubbe
- 17:01     Greening the Western Cape with Fruit Trees – Jan Odendaal
- 17:13     Questions
- 17:18     Role of Fruit Trees in the Food Chain – Ashraf Sirkoth (Rare Plants Only)
- 17:30     Questions
- 17:35     Planting, Growing and Caring for Fruit Trees – Caroline de Villiers (Themba Trees)
- 17:47     Questions
- 17:52     Gardening Tips - Michelle Nel (RC Helderberg Sunrise)
- 17:59     Closure – Geraldine Nicol
- 18:00     End of Webinar



**Jan Odendaal**

# **Greening the Western Cape with Fruit Trees**

**Green for Life/ Apple Tree Initiative**





GREEN FOR LIFE  
GROEN VIR LEWE

**KAAPSE  
CAPE**  
FORUM



2022/491738/08

Jan Odendaal  
15 November 2023  
Online – Greening the  
Western Cape with Fruit  
Trees





Green for Life in  
collaboration with Cape  
Forum and Apple Tree  
Initiatives together with  
Rotary South Africa

Greening South Africa –  
Starting in the Western Cape  
Schools



Sarepta Primary Kuilsriver 13<sup>th</sup> October



Morningstar 26<sup>th</sup> May





# Carpe Diem Special School - George

- 60 Fruit Trees planted
- 8<sup>th</sup> November 2023





# Kwanonqaba – Mossel Bay

- 50 Fruit Trees & Indigenous Trees planted
- 8<sup>th</sup> November 2023
- These trees were planted by Abused women - Victims of GBV






# Durbanville – Cape Town

**Boomp! antdag**  
**28 September**  
**2023**





# Partnering with







# Vegetable Gardens



# Greening South Africa

## What we offer you:

- Donation of both Fruit- and Indigenous Trees to Schools in the Western Cape
  - We work in collaboration with the Department of Agriculture and the Department of Forestry, Fisheries and the Environment
- Professional knowledge with regards to preparation & after care
- A network of supporting organizations to already existing projects

**KAAPSE  
CAPE**  
FORUM



# Questions



# **Role of Fruit Trees in the Food Chain**

**Ashraf Sirkhoth**

**RPO**





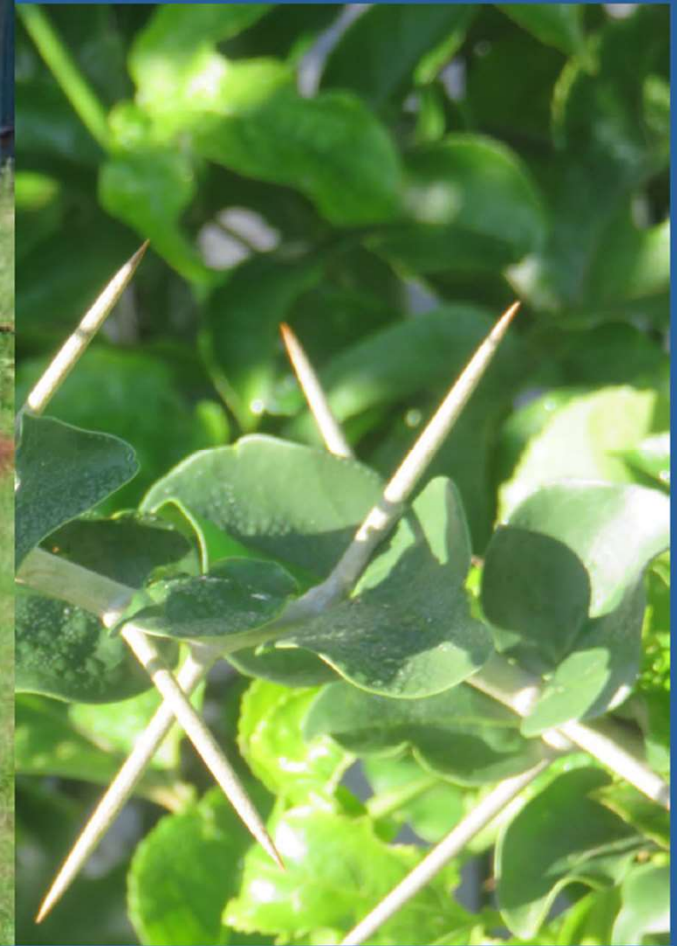
# Multi- functionality of Trees in Design



***Ashraf - Seed***



# Multi- functionality of Trees in Design

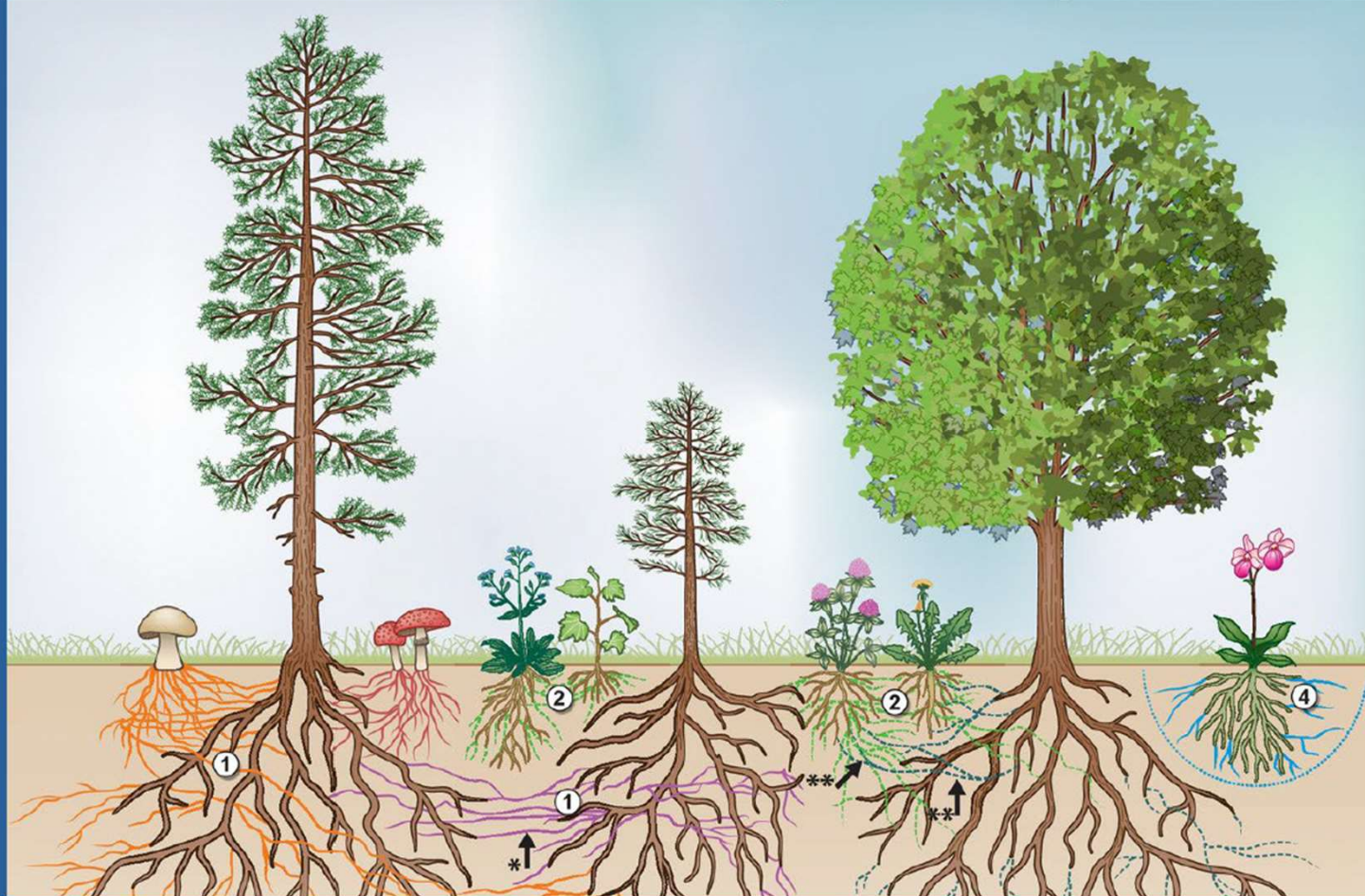


## ***Protective Barrier***

*Security, Animal Deterrent, Wind Break*



# Multi- functionality of Trees in Design

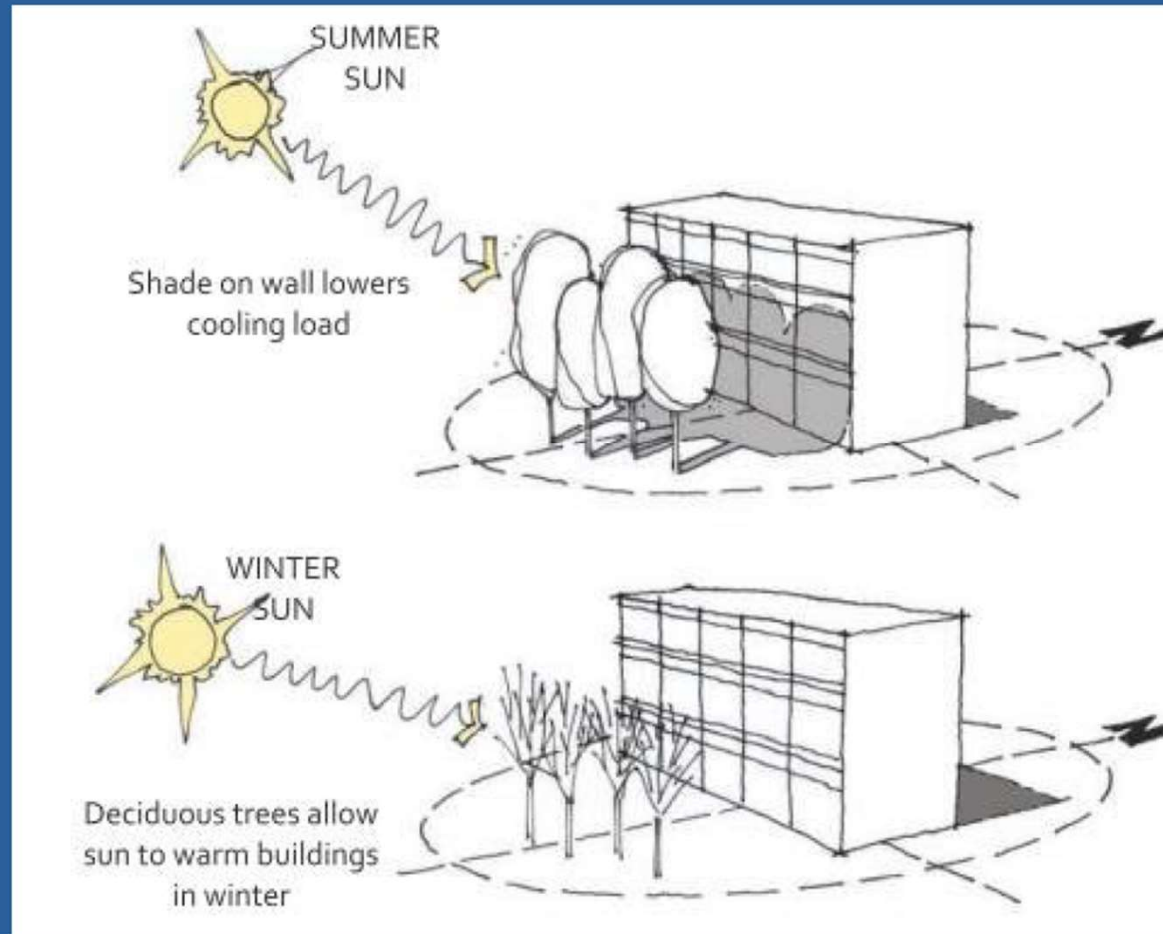


## ***Mothering Species***

*Establish Ecologies, Mulch, Nitrogen Fixers*



# Multi- functionality of Trees in Design



## ***Passive Solar Design***

***Deciduous Trees for Winter Heat and Summer Cooling***

# Multi- functionality of Trees in Design



***Ashraf - Seed***

# Questions





# **Planting, Growing and Caring for Fruit Trees**

**Caroline de Villiers**

**Themba Trees**





# Caring for Trees

THEMBA TREES



***Caroline – Themba Trees***



District  
9350



District 9350 Food  
Gardens Committee

**Fruit  
Trees**

# Questions





# Home Gardening Tips

Michelle Nel

(RC Helderberg Sunrise)



# Gardening Tips



## Aspect Design

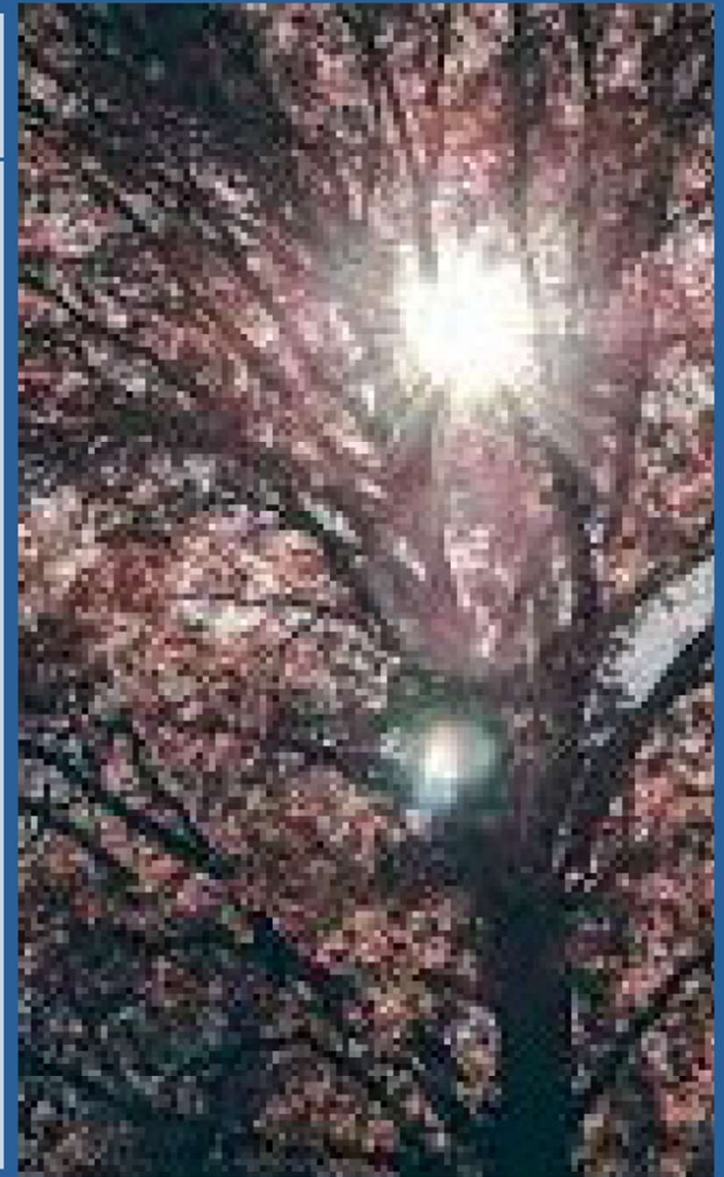
***The Value of a Single Tree***

# Gardening Tips

## Aspect Design Factors:

### → Sun Aspect (Hemisphere & Season) :

- SE for Morning Sun : Aim for 6 – 8 Hours of sun for food plants
- Northern: Hot & Dry (Deciduous)
- Eastern: Morning Sun (Nursery)
- South: Cool & Moist (Water storage)
- West: Late Afternoon – Hot & Harsh (Succulents & Aloes)





# Gardening Tips

## Aspect Design Factors:

- ✓ **Slope:** Nutrients gather at bottom, tree roots secure against erosion
- ✓ **Climate:** Rainfall & Temperature, Frost, Wind
- ✓ **Winds:** Seasonal – Summer SE -> Gusty ; Winter: NW - > Consistent
- ✓ **Fires:** Travel Faster up-hill
- ✓ **Water:** Harvest, Hold, Distribute
- ✓ **Noise & Security**
- ✓ **Immovable Objects**
- ✓ **Views**
- ✓ **Access & Use:** Humans & Animals



# Questions



# Closure

**Geraldine Nicol**

