

# **Rotary District 9350 Food Gardens Webinar**



1

# **Pavement Garden Video**



2

## **The Challenge**

- Covid-19 impact – hunger & unemployment & mental stress
- 2020 District 9350 response: R20m in food relief & PPE
- 2021 > Food Gardens = Sustainable alternatives
- Many forms of Food gardens :
  - Home gardens                      ECD/ School gardens
  - Community Gardens              Institutional Gardens
  - Business opportunities in food gardens



3

## **Purpose of D9350 Food Gardens Committee**

- **Creating awareness of importance of Food Gardens**
- **Forums for discussions**
- **Resource bank of information**
- **Encouraging Partnerships**
- **Ensuring sustainability & impact**



4

## **WEBINAR AGENDA**

### **1. Holistic approach to Food Gardens Community Partnerships: VPUU**

### **1. Rotary Clubs food garden projects**

### **3. Question & answer session > chat**

### **4. Charting the way forward**



5

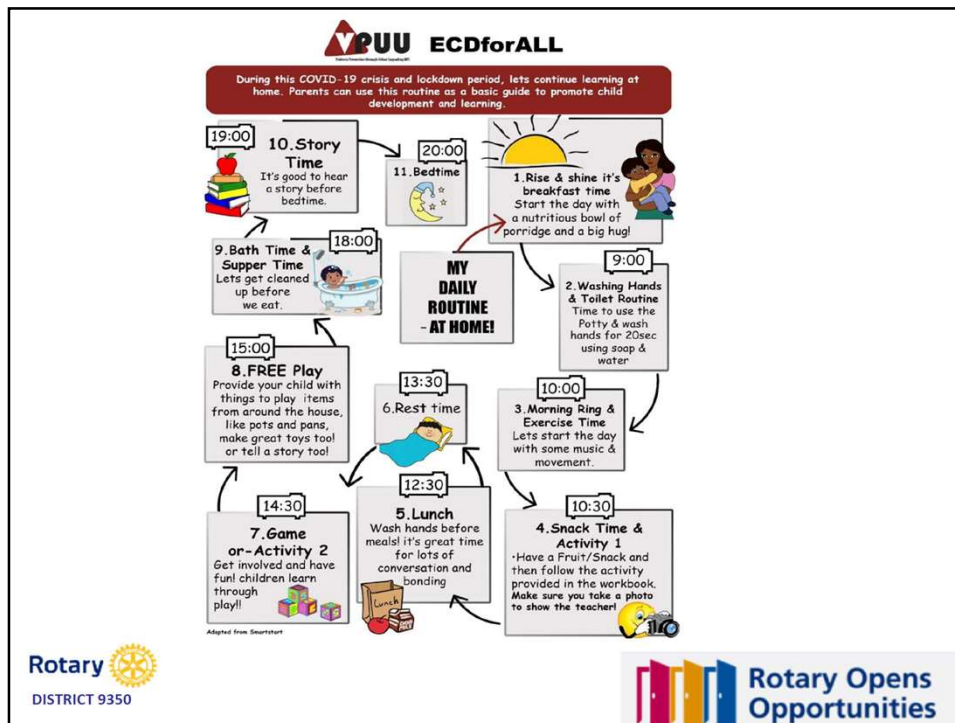
## **Towards Building a Community Circular Economy**

**Michael Krause  
VPUU**

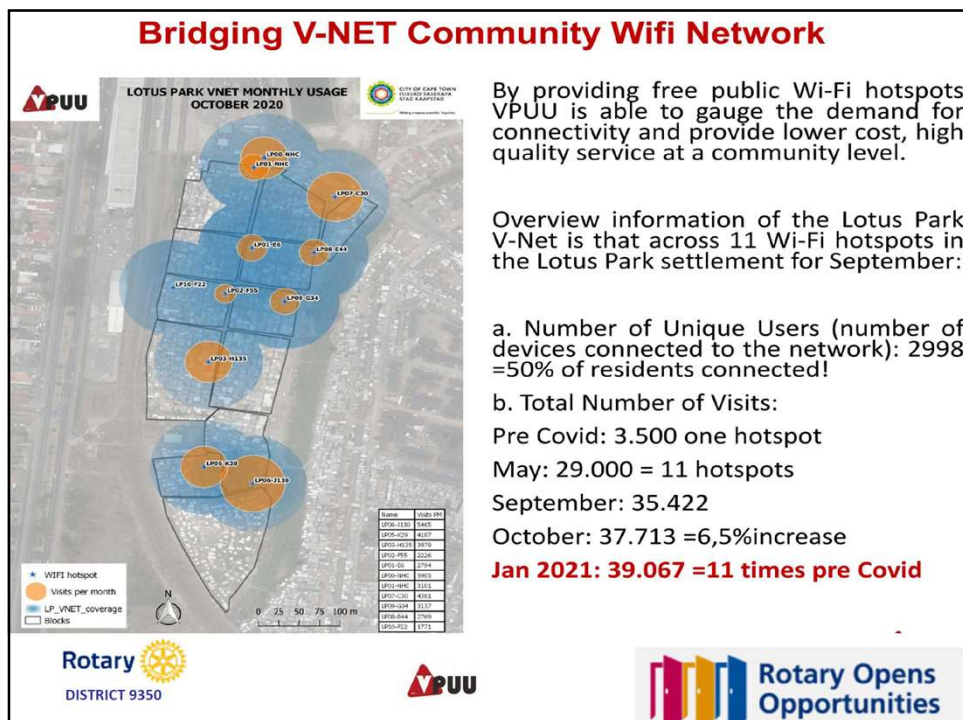


6





9



10



## The BIG Leap From 750 to 20.000



11

### Community Centred Covid-19 response: “Towards Building a Community Circular Economy”

#### Background

CoCT- German Development Corporation – With VPUU appointed as the Implementing Agent are partnering to assist most vulnerable groups to mitigate impact of Covid-19.

Total amount: **5Mio Euro** (approximately R90.0 million on current exchange rate)

Target Group: **Children 0-6 yrs, teachers of ECD's, members of urban gardens, pregnant women and food kitchens**

Target areas: **Hanover Park, Manenberg, Gugulethu, Nyanga, Harare, Kuyasa, Monwabisi Park** (last 3 neighbourhoods are all in Khayelitsha), **Bonteheuwel**.

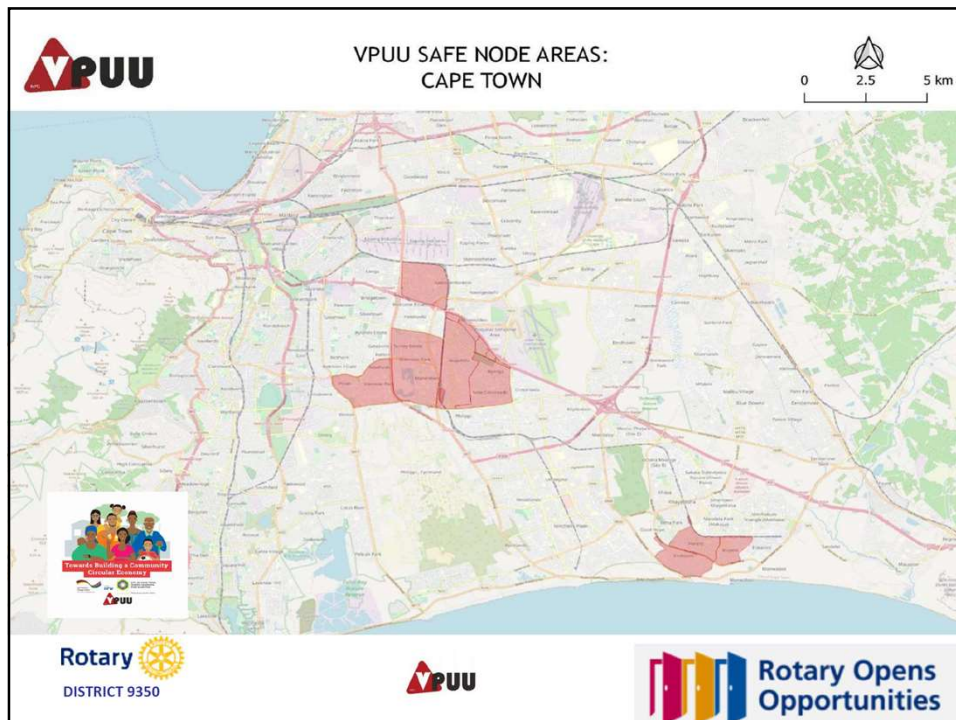
Duration: **November – February 2021 extension to end April 2021, (8 vouchers of R300 each)**

Approach: **Population level, meaning all people in above cohorts (ECD, pregnant women, gardeners, kitchen) in those 8 neighbourhoods are eligible to participate**

Partners: **Funder: German Development Cooperation, KfW**  
**CoCT local government partner, VPUU NPC/SUN Implementing Agent**  
**A number of strategic partners (DGMT, ELRU, Grow Great)**



12



13

**Community Centred Covid-19 response:**  
***“Towards Building a Community Circular Economy”***

- 1. Supporting healthy nutrition through Community Care vouchers and Food kitchens**
- 2. Early Learning and Skills Development**
- 3. Bridging the digital divide and connecting communities**
- 4. Local food production by partnering with urban food gardens**
- 5. Strengthening income generation, job creation, and local economic development,**
- 6. Strong partnerships with the community leaderships, local groups (GUFI, ECD Forums,..) as well as our implementation partners (DGMT, ELRU, Grow Great, Abalimi, Flash), Government (CoCT, WCG)**

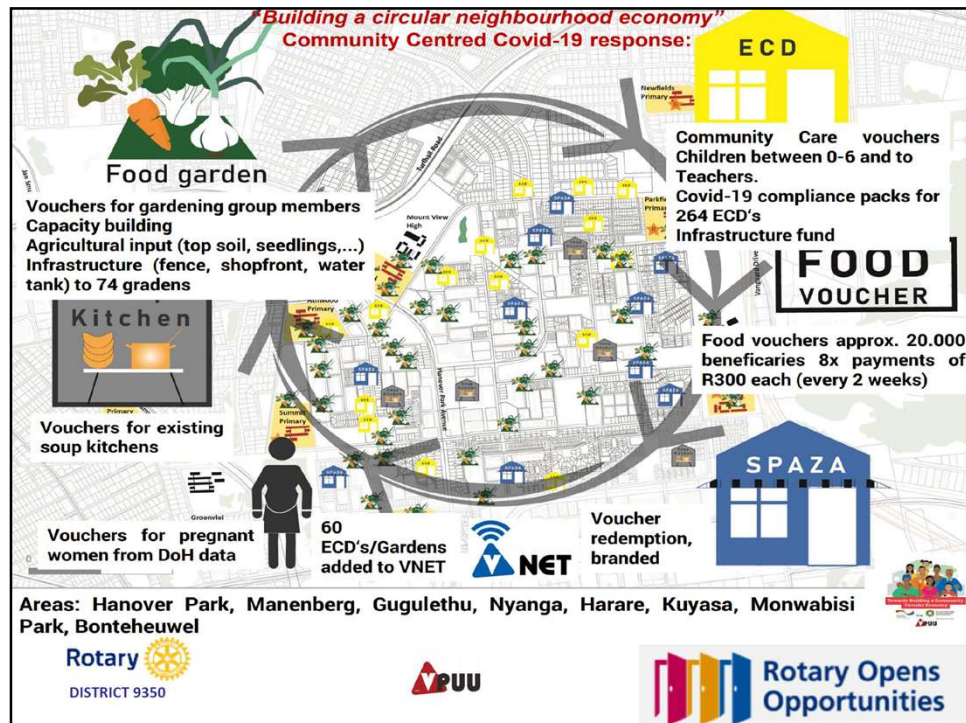
**ECD – ELRU, VPUU, ECD Forums**  
**Pregnant Women – Grow great, DGMT, WCG DoH**  
**Vouchers – DGMT, Flash**  
**Gardens – Abalimi, GUFI, Hanover Park**

**VPUU**

**Rotary**  
DISTRICT 9350

**Rotary Opens Opportunities**

14



15

**Community Centred Covid-19 response:**  
**"Towards Building a Community Circular Economy"**

In total: 24.328 people were interviewed.  
 Out of above: 21.190 were eligible and approved  
 Out of above: 19.295 are active  
 Total of 113.887 voucher @R300 is used since 18.11.2020

- ECD children: 10.675
- ECD staff: 1.156
- Grade R: 2.994
- Pregnant women: 2.784
- Disabled: 561
- Food gardens: 311
- Kitchen staff: 814

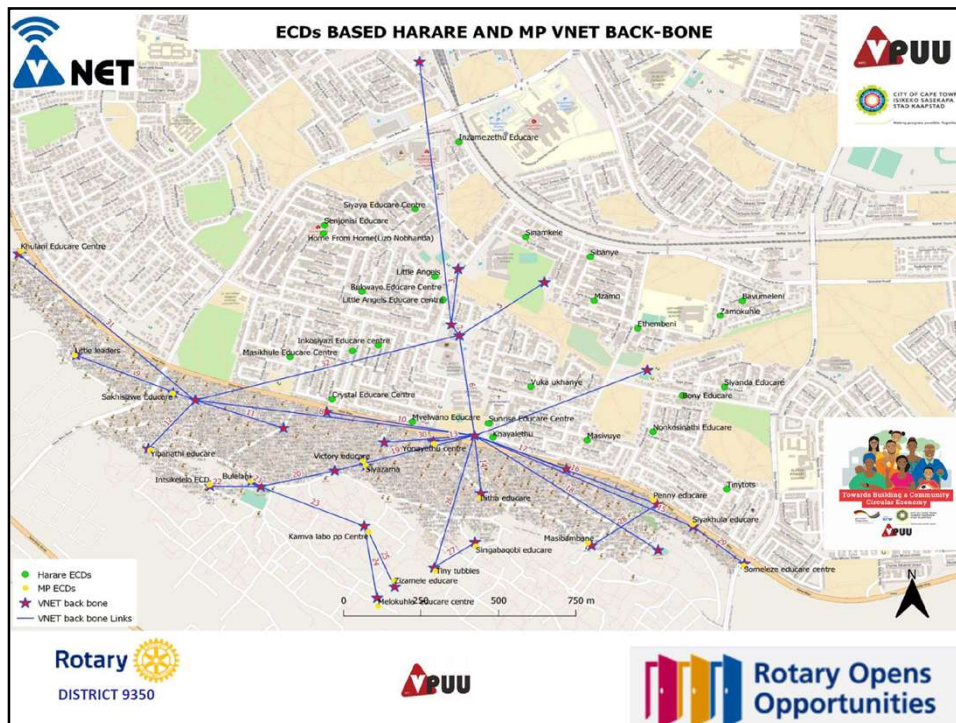
Reasons for not being active (not redeeming vouchers):  
 wrong number, not interested, moved to other Province, number does not exist, voicemail.

Rotary DISTRICT 9350

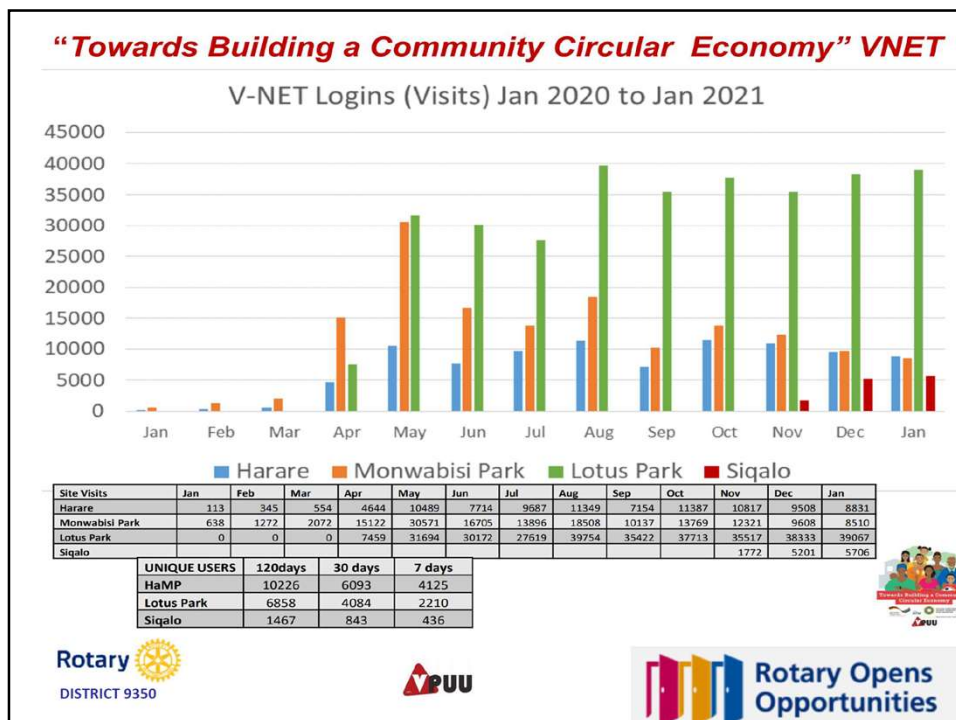
Rotary Opens Opportunities

16





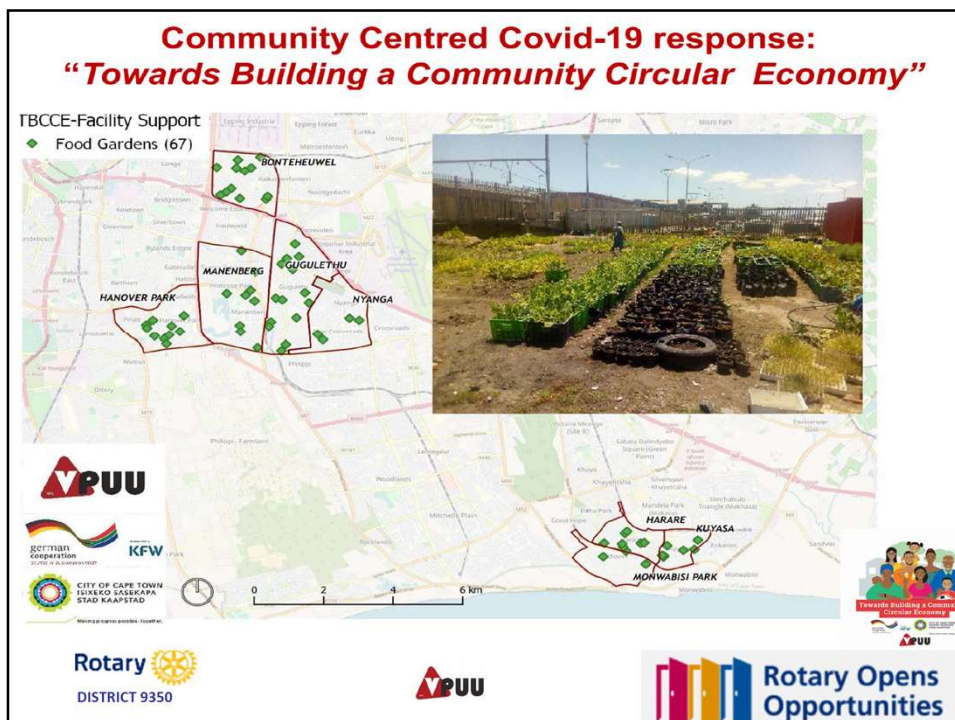
17



18



19



20



**Community Centred Covid-19 response:  
“Towards Building a Community Circular Economy”**

**5 components:**

- Analysis and better data (survey of gardens, etc.)
- Food vouchers for members of food gardens as bridge
- Agricultural input (seedlings, compost etc.)
- Infrastructure support (based on the garden surveys gardens will get specific defined “packages” obviously depending on funding)
- Capacity building and setting up a support network and peer learning network amongst the gardens and communities.



21

**Community Centred Covid-19 response:  
“Towards Building a Community Circular Economy”**

**Luleka School Harare, Khayeltisha**



22

## **Community Centred Covid-19 response: “Towards Building a Community Circular Economy”**

### **Broad timelines:**

Voucher issuing: ongoing Nov2020- April 2021

ECD Covid-19 Packs: Feb 2021

Garden support: Jan-Mar

Food kitchen: Dec-April

ECD support: Dec-April

VNET: Dec-April

### **How to link the short to the long term?**



23

## **Community Centred Covid-19 response: “Towards Building a Community Circular Economy”**

### **Successes:**

- Willingness and coordination to share experiences amongst NGO's, relief organisations, CAN's
- Established partners of work (15 years of mutual relationship with CoCT, WCG)
- Relief as logic consequence of long term presence
- Clear and strict boundaries (8 neighbourhoods, processes, trust) Adaptability (Programmatic – kitchen volunteers) room for local decision making
- Strong implementing partners (DGMT, Flash, Grow Great, ELRU, Abalimi,...)
- Structured approach quick but not rushed (take structures along)
- Local vetting of information = co-ownership
- Trusted partner

### **Learnings:**

- Planning and reality
- Anything can go wrong
- Early enrolment
- Have a back up plan
- We test our boundaries
- Be gentle
- Find the simplicity beyond complexity



24



# Food Gardens at Schools and Adult Disabled Centres

Farhat Danyal  
RC Seapoint



25

## District Food Gardens

ORAL HEALTH

HAND WASHING

HEALTHY EATING

VEGETABLE GARDEN

During the pandemic, Rotary Sea Point collaborated with the Dental Wellness Trust (DwF), which established the **LiveSmart toothbrushing programme** to train and educate teachers on how to help children look after their **oral health, how to clean hands hygienically including eating wholesome food and growing nutritious food.**


There are currently **15,000 children** on the Livesmart Toothbrushing programme who attend **162 schools** in **Khayelitsha and Mfuleni.**

The pandemic escalated the hunger crisis and as a result, food gardens were established. With Rotary Sea Point the mamas were educated by Abalimi Gardens Centre in Khayelitsha on **how to grow four vegetables (spinach, beetroot, tomatoes and potatoes)** with compost, used tyres and two litre plastic bottles for irrigation. At each school, there is a gardener who manages the vegetable garden and each Mama is responsible for their own garden.


Rotary Sea Point is continuing to support this project in collaboration with DwF by providing funding for the vegetable gardens.

26

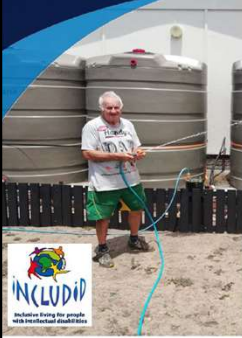
## The Includid Vegetable Garden



Rotary  
Club of Sea Point



Rotary Opens Opportunities





**Includid**  
Inclusion living the people with intellectual disabilities


The Sea Point Rotary Club has had a long term relationship with Includid a NPO organization that is a cluster of homes for intellectually challenged adults who live semi-independently on the grounds of Alexandra Hospital.

In 2005 Rotary Sea Point financially assisted in establishing a vegetable garden by providing fertiliser and topsoil. A person was appointed to prepare the grounds with the help of the residents. Beds were prepared where seeds were planted and within a week the seedlings started to sprout. After a couple of weeks, a sizeable produce of broccoli, onions, artichokes, peppers and beetroots was harvested!


In the picture you can see a garden cottage where additional beds were prepared. The most important aspect was to consider the availability of water. 20 000 litres of water was required to service the garden. Rotary Sea Point installed 4 large water barrels, with an industrial plywood support base. The Barrels installed on the Plinth, give 20000 litres of water, with plumbing connecting all four barrels and a pump with a pressure sensitive switch and a fence to protect the plumbing.

The Department of Agriculture has a scheme to provide a borehole at no cost, which will be very helpful to the garden. Old Mutual will provide 8 cultivation tunnels, 66sqcm each. In summer when it is too hot, the plants can be grown in the tunnels to ensure a supply of produce all year round.



Rotary  
DISTRICT 9350




Rotary Opens Opportunities


27

# The challenges of working on Community Food Gardens

## Stephen Young RC Swellendam



Rotary  
DISTRICT 9350



Rotary Opens Opportunities

28





29



30



31



32





33

# How to organize a large Food Garden

Di Kershaw  
RC George



34

## GARDEN PURPOSE

- **FOOD DONATION TO THE SOUP KITCHEN :**
- ALL PARTIES WERE SEARCHING FOR A MORE SUSTAINABLE SOLUTION AS FOOD SOURCE FOR THE KITCHEN. THE BEST OPTION WAS THE USE OF AVAILABLE LAND IN FORM OF A GARDEN TO PRODUCE VEGGIES , HERBS AND SALADS .
- IF NOT ENOUGH LAND IS AVAILABLE – ONLY TRAINING GARDENS ARE FEASIBLE
- THE CHILDREN PARTICIPATING WOULD TAKE THE KNOWLEDGE HOME FOR THEIR OWN HOME GARDENS



35

## GARDEN STARTER

GEORGE ROTARY  
CONSULTACKE@GMAIL.COM  
feb 2021

### BASE ELEMENTS TO ORGANIZE A GARDEN PROJECT :

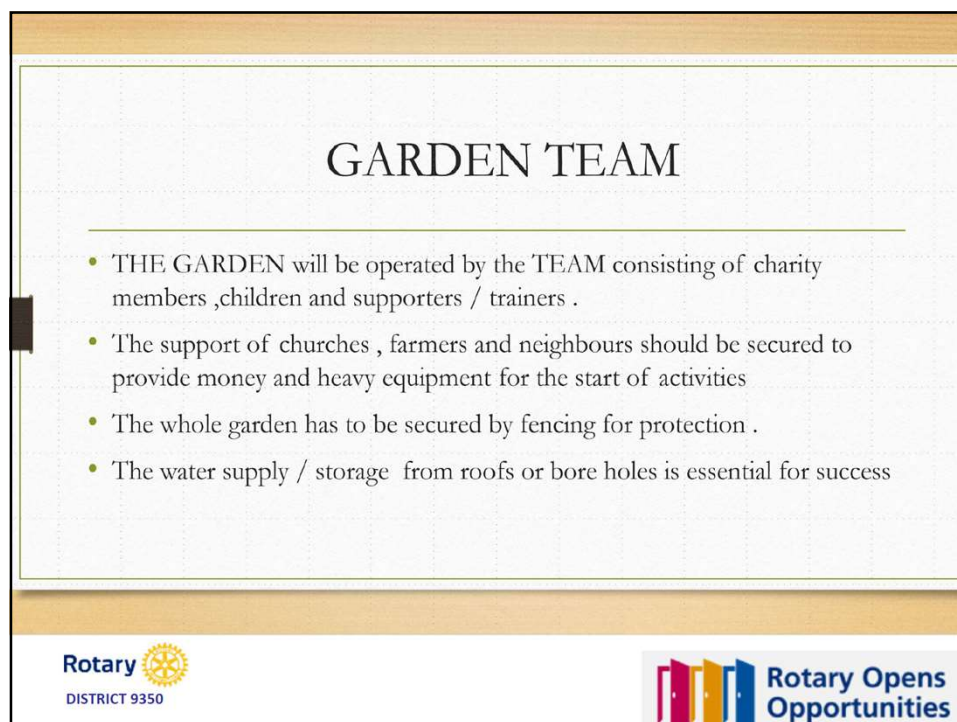
- OWNERSHIP +
- PARTNER TEAM +
- WATER SOURCE +
- FUNDRAISING



36



37



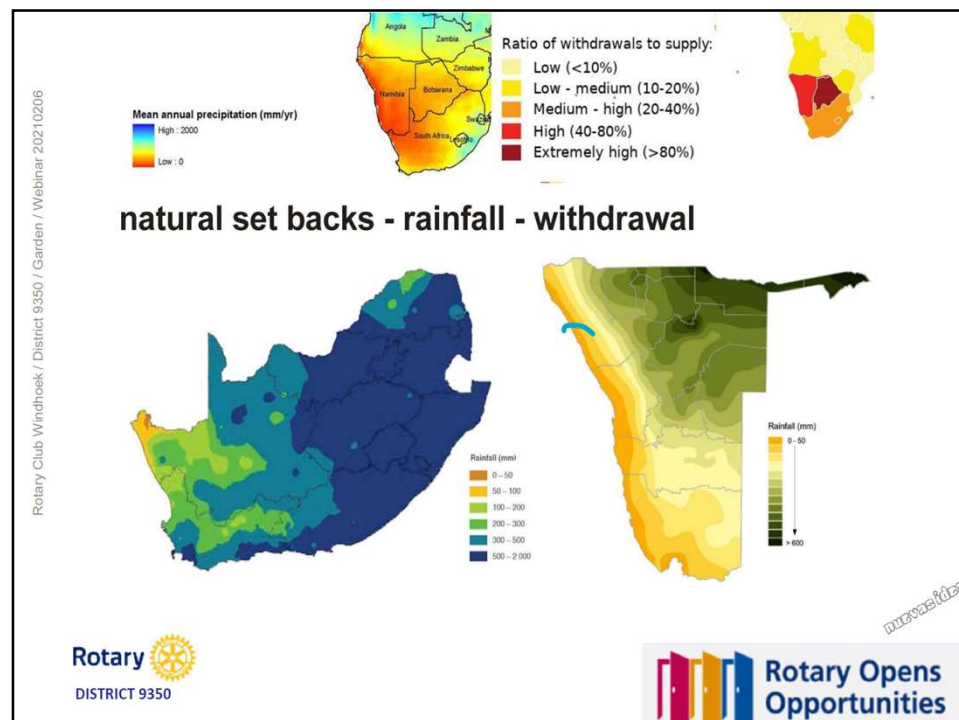
38

# Food Garden challenges and how we coped

Wolfgang Schenck  
RC Windhoek



39



40



Rotary Club Windhoek / District 9350 / Garden / Webinar 2021 0206

**man made set backs - degradation - technology**

41

Rotary Club Windhoek / District 9350 / Garden / Webinar 2021 0206

**more set backs - theft - pests- bills- sales**

42

Rotary Club Windhoek / District 9350 / Garden / Webinar 20210206

**How? - keyhole - bag- tyre - garden**

**How? - tanks - drip irrigation African style**

**OR?**

**AND!**

**Wormfarm**

Rotary DISTRICT 9350

Rotary Opens Opportunities

43

# Developing School Gardens

Chris Matthews  
RC Atlantis

Rotary DISTRICT 9350

Rotary Opens Opportunities

44

Thanks to the Hobbs family for the sponsor of seedlings to Rotary Atlantis. Atlantis proud of her.



Rotary   
DISTRICT 9350

 Rotary Opens  
Opportunities

45

Rotary Club Atlantis are supplying seedlings to schools in Atlantis of which the harvest is used for the school feeding scheme.



Rotary   
DISTRICT 9350

 Rotary Opens  
Opportunities

46



Rotary club of Atlantis also support Orion a local Special needs school in Atlantis with a vegetable garden. The harvest are used to feed them.



Rotary   
DISTRICT 9350

 Rotary Opens  
Opportunities

47

Atlantis Sub-council also promoting gardening. They have their own garden on their premises in Atlantis.



Rotary   
DISTRICT 9350

 Rotary Opens  
Opportunities

48



# Home Food Gardens

Lisa Morkel  
RC Claremont



49

## ROLE OF “THE BACKYARD GARDENERS”

Started as a forum to:

- Share skills and knowledge
- Empower people, reduce boredom, provide an occupation
- Coordinate access to vegetable and fruit plants and seeds
- Promote culture of securing (healthy) food and reducing hunger
- Improve nutritional awareness

In their own backyards for their own consumption



50

## CHALLENGES

- Small backyard spaces
- No common land for common activities
- Poorly nourished soil
- Limited access to water and the ability to store it
- Lack of gardening tools
- Ability to become self-sustaining and eventually commercial



51

## ROTARY'S ROLE

- We were contacted by the group leader
- Financial support
- Requested assistance with skills and further learning to become self-sustaining
- Access to land



52

## NEXT STEPS

- Longer-term project to help the community
- Access to land for shared use
- Specialisation of individuals
- Access to capital and market – management skills required
- Partnerships with other relevant stakeholders within the industry
- Self sustainability and commercialization
- Head of group is happy to discuss community needs



53

# Aquaponics and Hydroponics Food Garden

Zalia Frosler  
RC Groote Schuur



54



# School Food Garden





Rotary DISTRICT 9350

Rotary Opens Opportunities

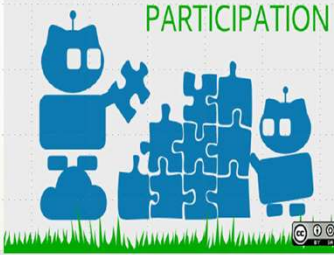
55

# Problem

- Political & Economic,
- Socio-Cultural, and
- Technological

PARTICIPATION




Rotary DISTRICT 9350



Rotary Opens Opportunities

56


## Addressing the challenge


Aquaponics







Hydroponics





Rotary  
DISTRICT 9350



Rotary Opens  
Opportunities

57

## Impact & Benefits & Success

Partnerships




Beneficiation




Operations  
Management and  
Training





Rotary  
DISTRICT 9350



Rotary Opens  
Opportunities

58

# Sustainable Food Gardens through partnerships

Mark Heinstein  
Franschhoek



59

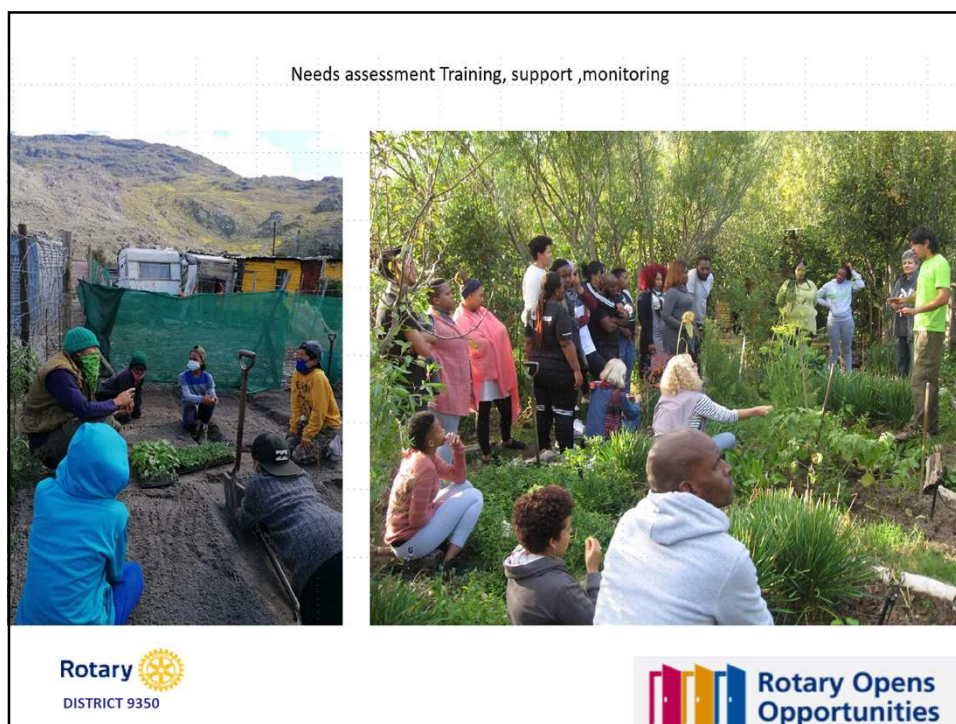
Past experience

Public/ community participation

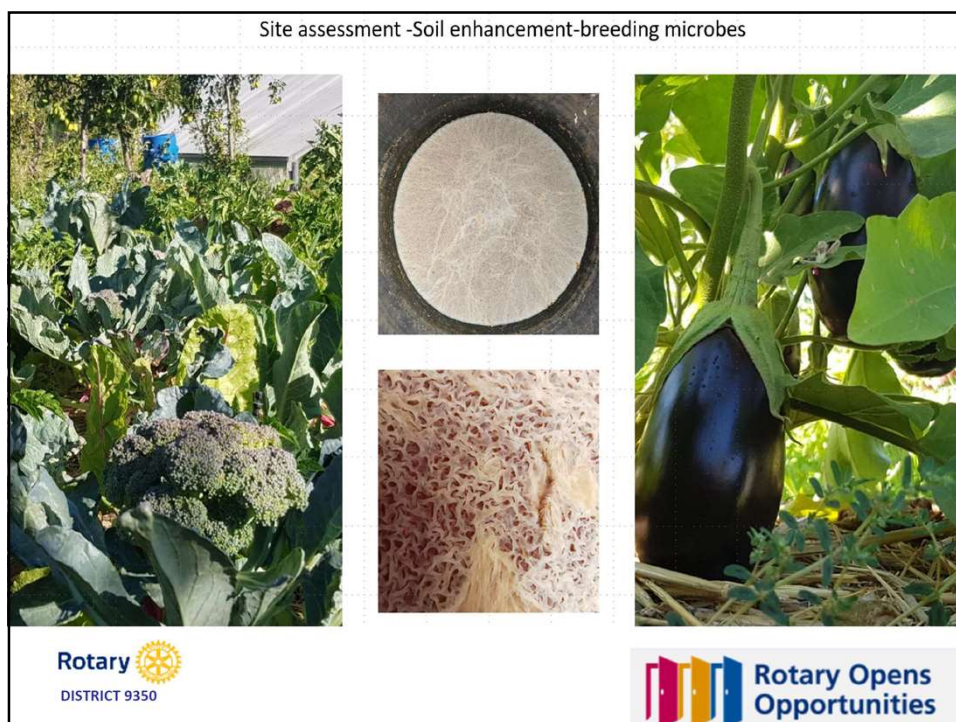


60





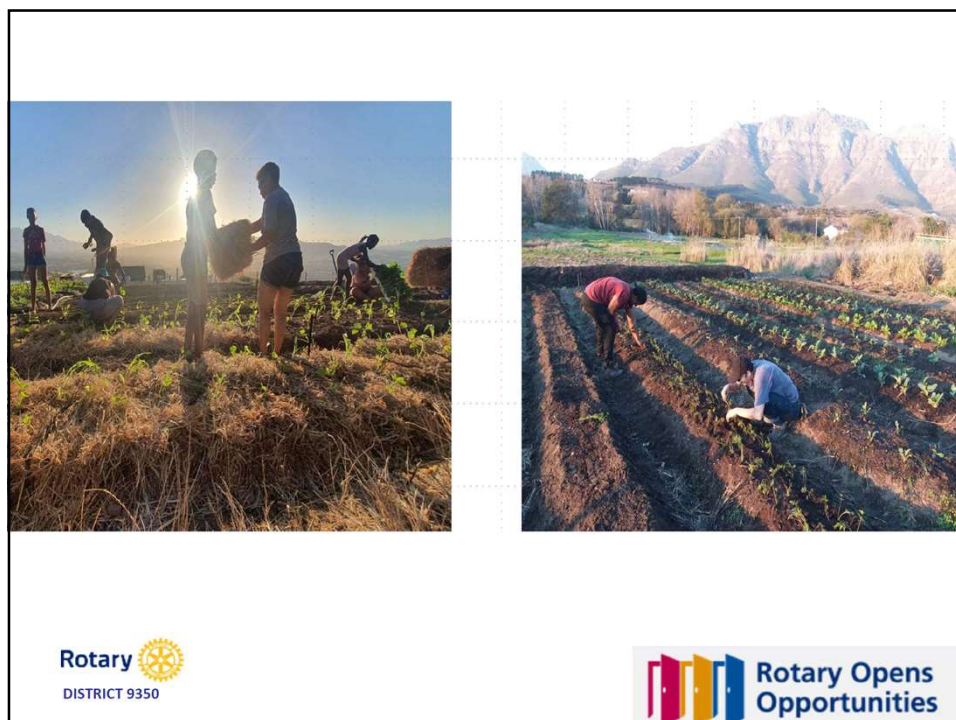
61



62



63

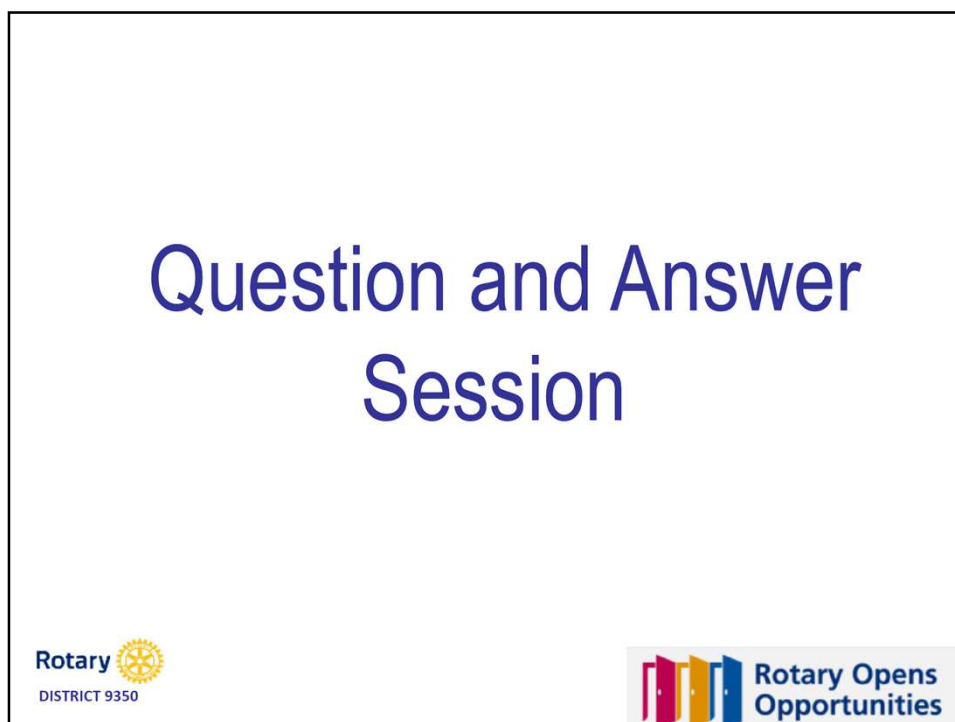


64





65



66



# The Way Forward

Geraldine Nicols  
RC Newlands and District

