

AUSTRALIAN
LANDSCAPE
TRUST



HEALTH OF THE RIVER

ROTARY YOUTH FORUM



CALPERUM STATION

Renmark, South Australia

WHERE SCIENCE, THE ENVIRONMENT & COMMUNITY COMBINE

MONDAY 5TH—THURSDAY 8TH
NOVEMBER, 2018

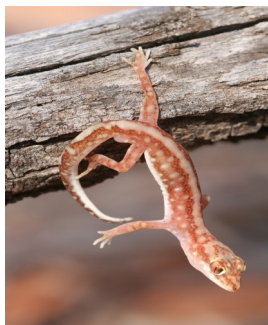


Rotary Youth Forum - Health of the River

The 2018 Health of the River Forum will be held at Calperum Station, Renmark from 5 to 8 November. The forum is for yr 9 & 10 students interested in science, protecting the environment & natural resource management. It provides hands on learning and mentoring from specialist ecologists on a working conservation and research property. Supported by Rotary Clubs, the program provides transport, accommodation, meals, a wonderful learning experience and lifelong memories.

Calperum Station

Calperum Station covers approximately 240,000 hectares and extends from Mallee country to the banks of the Murray River. An internationally significant wetland system, Calperum is home to several rare and threatened species and makes up approximately one third of the Riverland Ramsar site. Managed by a team of ecologists and Aboriginal rangers, Calperum hosts several significant scientific studies and environmental projects, and is regularly visited by universities, schools and international students.



Rotary Youth Forum - Health of the River

Field Study Program

Students will rotate through diverse and interesting activities during the program. They will work along side Calperum Ecologists and Rangers learning about and participating in environmental research and management projects. These may include:

- Black box tree health surveys
- Small mammal and reptile trapping
- Wetland degradation restoration
- Cultural and environmental walks

Skills and Knowledge

Throughout the program participants will be exposed to challenges and scenarios which help develop a range of skills essential for not only science work, but also everyday life. These include:

- Team work
- Analytical thinking
- Scientific research methodology
- Data collection

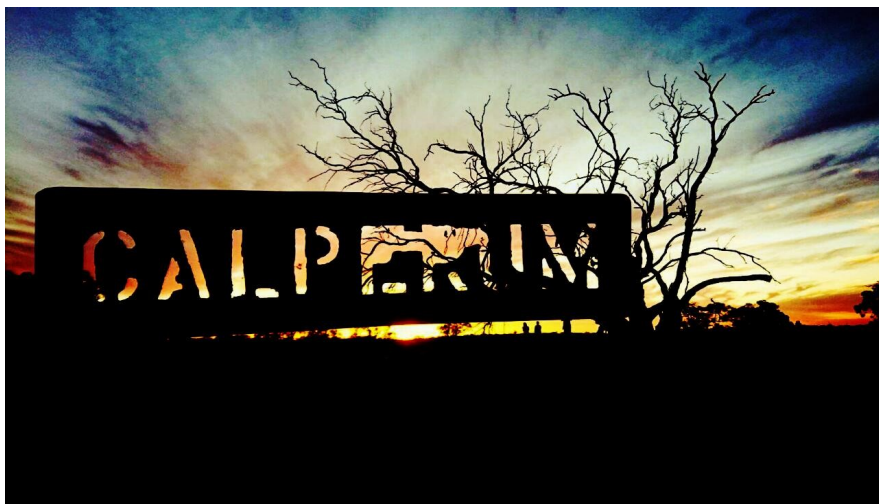


Program Inclusions

While on the program students will be surrounded by nature, and all they need to do is make the most of the opportunity to become involved in protecting our magnificent river environment. We cover the rest, including:

- Transport to and from Calperum station
- Comfortable dormitory style accommodation
- All meals, beverages and snacks provided





For more information contact:

Caitlin Polack

Education Ecologist
CALPERUM STATION

E: caitlinp@alt.org.au

P: 08 8595 7359

Bruce Cole

Rotary Convenor

E: brucegcole@gmail.com

P: 0414825454



JOINT DISTRICT 9520 & 9500

