



# School & District Report Card

**Marianne Mottley, Assistant Director**

**Office of Accountability**

**Ohio** | Department  
of Education

# Today's Topics

- ✓ **New Report Card Calculations**
  - ✓ **Graduation Rate**
  - ✓ **Achievement**
  - ✓ **Gap Closing**
  - ✓ **Progress**
  - ✓ **K-3 Literacy**
  - ✓ **Prepared for Success**

### ACHIEVEMENT

	NOV.	FEB.	APRIL	JUNE
Reading	B	a	a	a
Mathematics	B	B	B <sup>+</sup>	a
Language Arts	B <sup>+</sup>	a	a	a
Applied Spelling	B	B	a	a
Science	a	a	a	a
Social Studies	B	B	B <sup>+</sup>	a
Handwriting		a	B	a
Art	a	a	a	a
Physical Education		B	B	a
Music – Vocal	B	a	a	a
Instrumental				

A – Excellent    B – Good    C – Satisfactory  
D – Poor    F – Failure

### PERSONAL GROWTH AND DEVELOPMENT

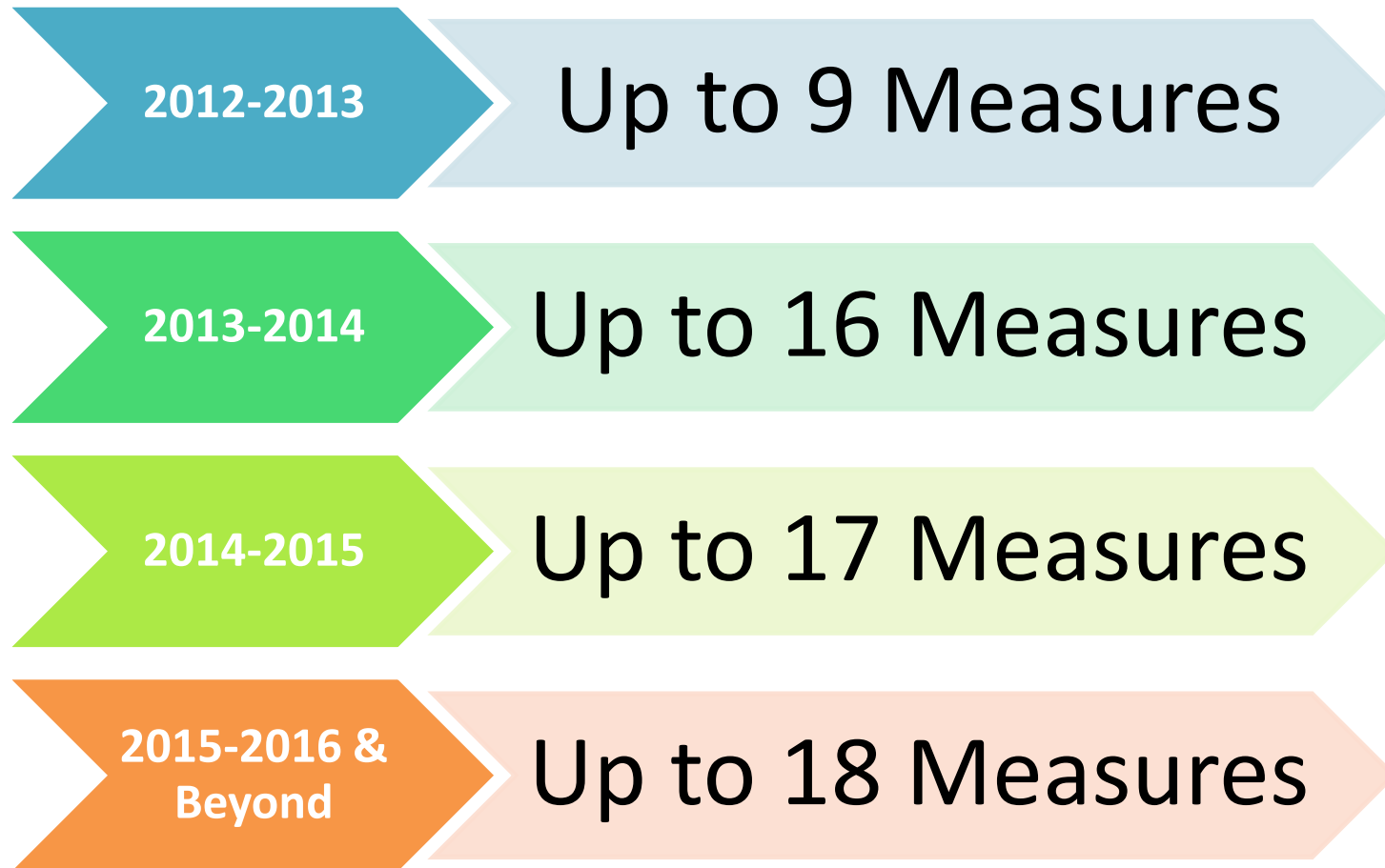
	NOV.	FEB.	APRIL	JUNE
Effort	S	S	S	S
Conduct	S	S	S	S
Preparedness	S	S	S	S
Courtesy	S	S	S	S
Health Habits	S	S	S	S

S – Satisfactory    U – Unsatisfactory

# Ohio's New Report Card

## A better tool for parents

# Measures Phased In



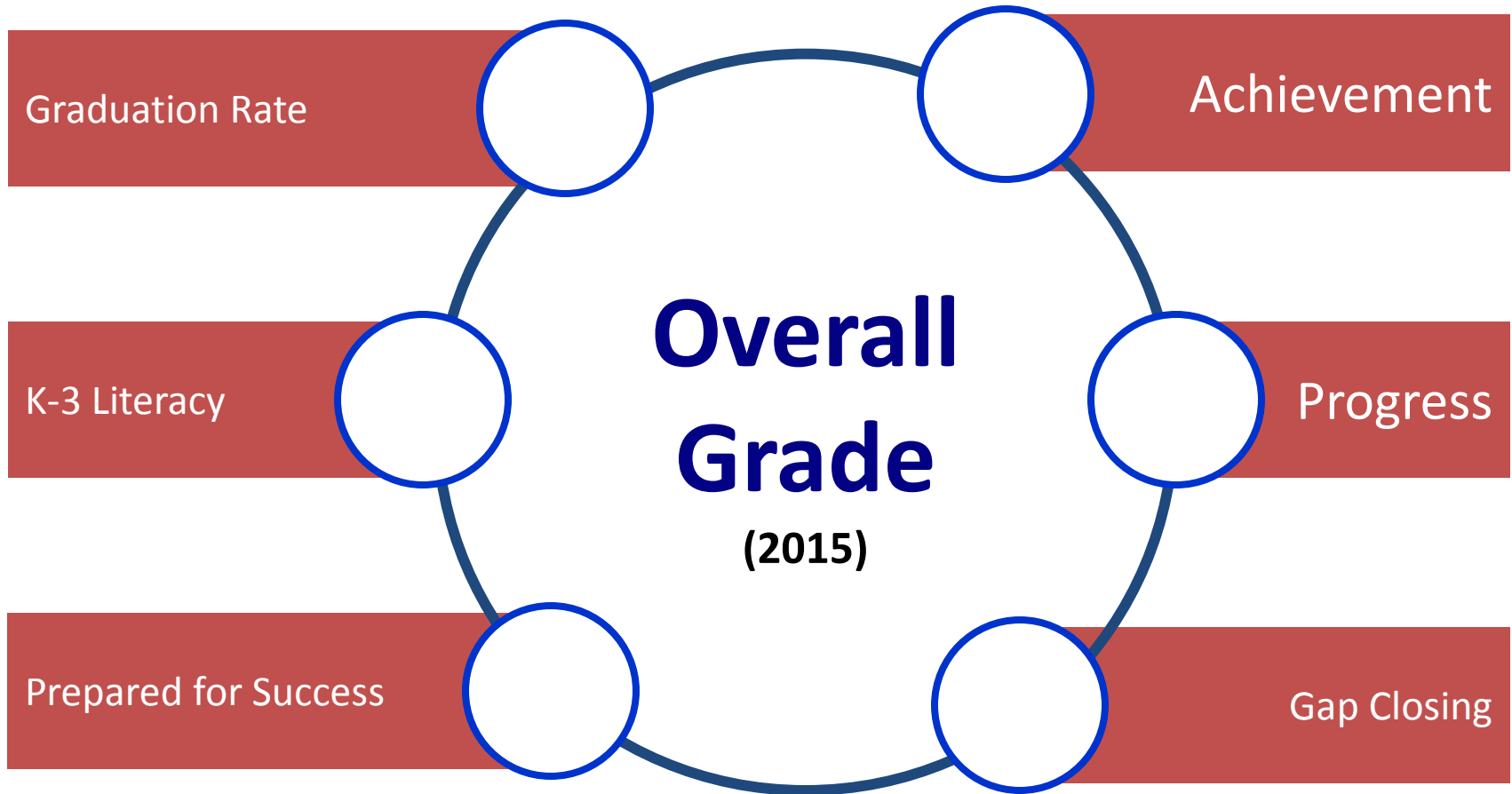
# **New Report Card Based on Letter Grades**



**Report card measures  
grouped into **6  
components in 2015.****

**The 6 components  
make up the **overall  
grade in 2015.****

# Overall Grade & Components



# Report Card Components





# Graduation Rate

- **Same longitudinal “cohort” calculation used on 2012 report cards**
- **Cohort: Students accountable to the school and/or district who were first-time 9<sup>th</sup> graders four years earlier**
  - **Accountable:** Last school and/or district of accountability
  - **Numerator:** Number of students in the adjusted cohort who graduated in four years or less
  - **Denominator:** Total number of students in the adjusted cohort for that class



# Graduation Rate Calculation

- **Adjustments to the cohort made for students who join or leave the school at grade level during the four-year period**
- **Adjustments may not be made to reassign a student to a new cohort**

# 4 Year Graduation Rate

Grad Rate – Four Year Letter Grade	Grad Rate – Four Year Percentage
A	93% - 100% **
B	89% - 92.9%
C	84% - 88.9%
D	79% - 83.9%
F	< 79%

**\*\*** *Specified in legislation*

# 4 Year Graduation Rate

<b>Grad Rate – Four Year Letter Grade</b>	<b>Districts</b>	<b>Buildings</b>
<b>A</b>	<b>294</b>	<b>327</b>
<b>B</b>	<b>157</b>	<b>169</b>
<b>C</b>	<b>92</b>	<b>102</b>
<b>D</b>	<b>40</b>	<b>59</b>
<b>F</b>	<b>26</b>	<b>134</b>

# Five-Year Graduation Calculation

- **2011 graduating class updated to reflect mobility during the 2011-12 school year**
- **Same business rules apply to the five-year rate that apply to four-year rate**
- **Summer graduates from the fifth year are included in the numerator**

# 5 Year Graduation Rate

Grad Rate – Five Year Letter Grade	Grad Rate – Five Year Percentage
A	95% - 100% **
B	90% - 94.9%
C	85% - 89.9%
D	80% - 84.9%
F	< 80%

**\*\* Specified in legislation**

**New Measure**

# 5 Year Graduation Rate

Grad Rate – Five Year Letter Grade	Districts	Buildings
A	216	239
B	237	267
C	98	119
D	35	54
F	24	110

# Report Card Components





# State Indicators

- **24 Indicators**
  - **Grades 3-8 Reading (6 tests)**
  - **Grades 3-8 Math (6 tests)**
  - **Grades 5 & 8 Science (2 tests)**
  - **10<sup>th</sup> Grade OGT (5 tests)**
  - **11<sup>th</sup> Grade OGT (5 tests)**
- **No Attendance or Graduation**

# State Indicators

- **Same Where Kids Count Rules (FAY applies)**
- **Same FERPA masking rules (At least 10 accountable students to have an indicator reported)**

# State Indicators

- **2013 – 75% proficiency standard (85% required for 11<sup>th</sup> grade OGT)**
- **2014 Proficiency standard increases to 80% (11<sup>th</sup> grade stays at 85%)**
- **2015 New assessments implemented; do not know what new standard will be**

# State Indicators – Current 75% Proficient Standard

State Indicators Letter Grade	State Indicators Percentage
A	90% - 100% **
B	80% - 89.9%
C	70% - 79.9% **
D	50% - 69.9%
F	< 50% **

**\*\* Specified in legislation**

# State Indicators

Grad Rate – Five Year Letter Grade	Districts	Buildings
A	320	1550
B	114	310
C	81	252
D	48	295
F	46	868

# 2014 State Indicators – 80% Proficient

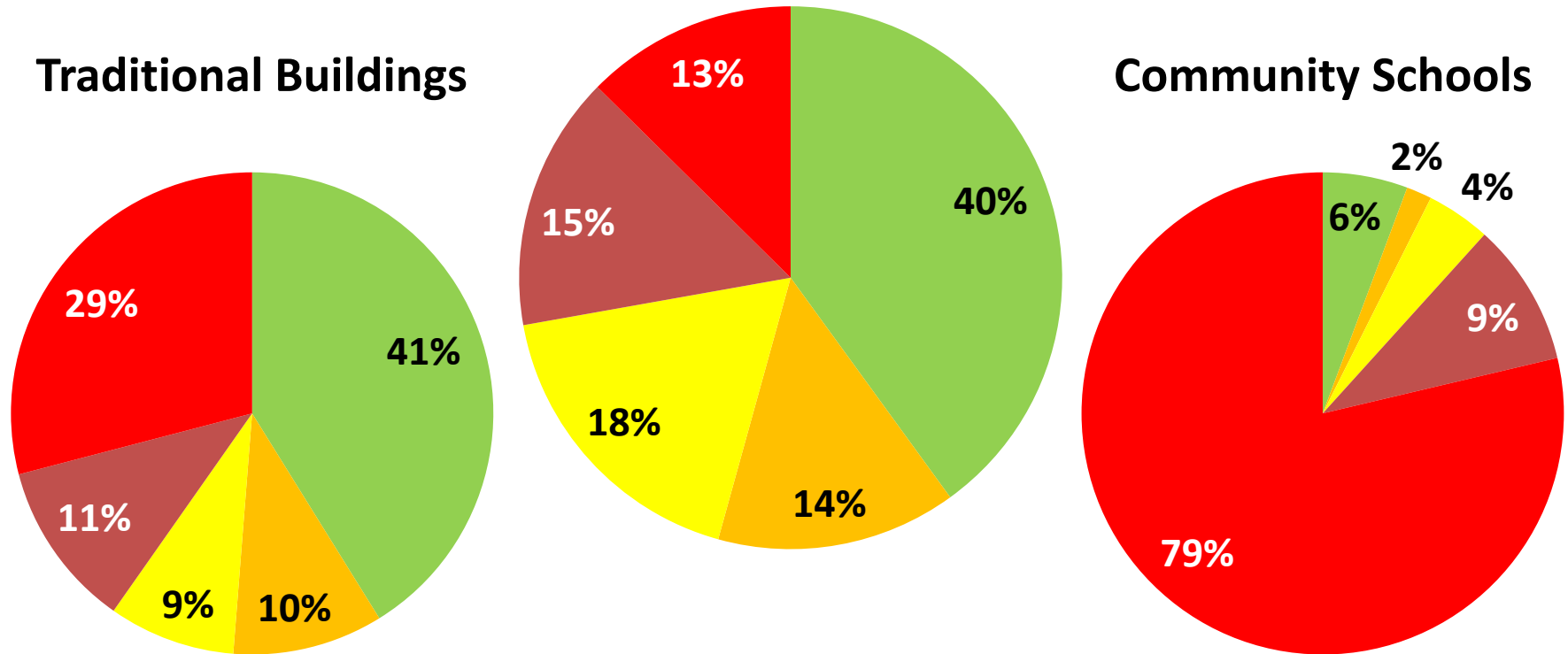
State Indicators Letter Grade	State Indicators Percentage
A	90% - 100% **
B	80% - 89.9%
C	70% - 79.9% **
D	50% - 69.9%
F	< 50% **

**\*\* Specified in legislation**

# State Indicators – 80% Proficient



**School Districts**

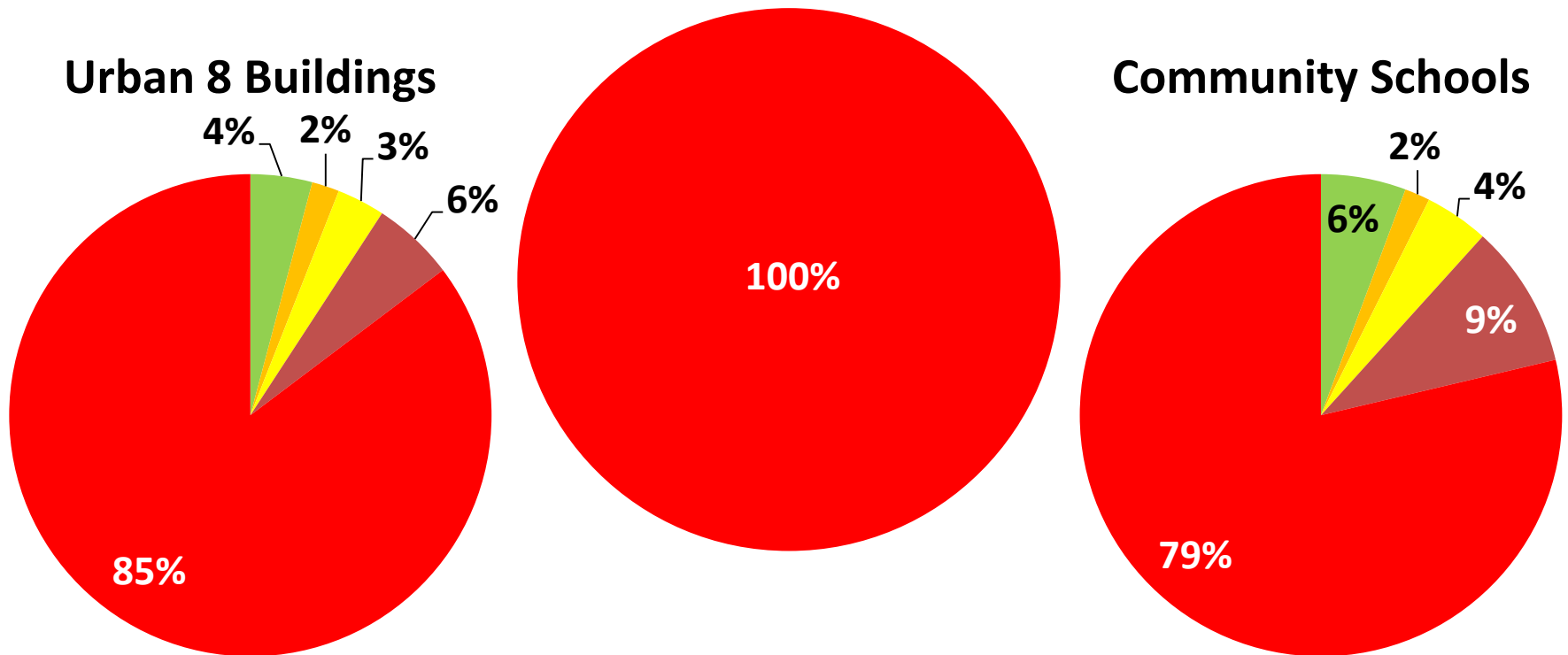




# State Indicators – 80% Proficient



## Urban 8 Districts



# Performance Index

- **Measures the achievement of every student, not just whether or not they reach proficient.**
- **Schools receive points for every student's level of achievement.**

# Performance Index

- **Same Where Kids Count Rules (FAY applies)**
- **Same basic calculation of assigning points based on percentages in each performance category**
- **Same weights for each existing category**
- **One new weight**

# Performance Index – New Weight

- **Students on formal “Acceleration” plans earn higher weights**
  - Students in “Proficient” range = “Accelerated” weight
  - Students in “Accelerated” range = “Advanced” weight
  - Students in “Advanced” range = “Advanced Plus” weight of 1.3

# Performance Index Calculation

Test Range	Percent of Tests in Range	Weight	Points
Untested	0.1%	0	0
Limited	4.0%	0.3	1.2
Basic	22.0%	0.6	13.2
Proficient	45.0%	1	45
Accelerated	25.0%	1.1	27.5
Advanced	3.6%	1.2	4.32
Advanced Plus	0.3%	1.3	0.39

**Total PI Score Points**

**91.6**

# Performance Index Calculation

- **“Perfect” PI Score = 120 Points**
- **Calculate percentage of points earned**

$$91.6/120 = 76.3\%$$

# Performance Index

Performance Index Letter Grade	Performance Index Percentage
A	90% - 100% **
B	80% - 89.9%
C	70% - 79.9%
D	50% - 69.9%
F	< 50% **

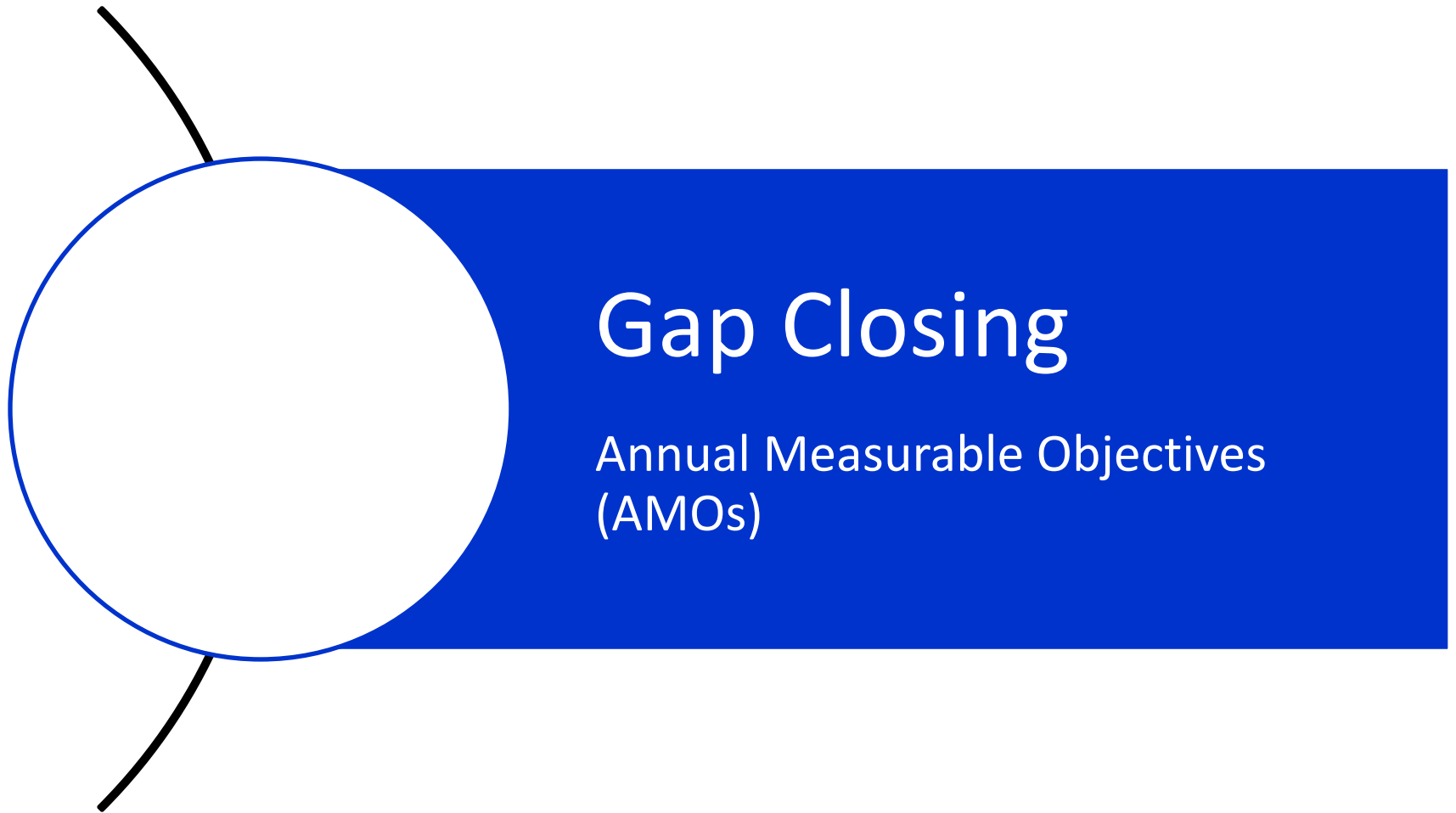
**\*\* Specified in legislation**



# Performance Index

<b>Grad Rate – Five Year Letter Grade</b>	<b>Districts</b>	<b>Buildings</b>
<b>A</b>	<b>27</b>	<b>216</b>
<b>B</b>	<b>436</b>	<b>1781</b>
<b>C</b>	<b>128</b>	<b>726</b>
<b>D</b>	<b>19</b>	<b>520</b>
<b>F</b>	<b>0</b>	<b>50</b>

# Report Card Components



# **Gap Closing (Annual Measurable Objectives)**

- Measures the academic performance of specific groups of students**
- Replaces old AYP calculation**
- More realistic targets, but more aggressive improvement (gap closing) expected to earn top letter grades**

# **Gap Closing-Similarities to AYP**

- Same Where Kids Count Rules**
- Same 10 subgroups evaluated**
- Same “N” size of 30 for Proficiency**
- Same “N” size of 40 for Participation**
- Same Attendance Goal (93%)**
- Same Participation Rate Goal (95%)**

# Gap Closing – Differences from AYP

- A single AMO for reading and math versus seven different AYP goals
- Graduation AMO for 4-Year Rate Only

AMO Measure	Baseline AMO	2012-2013	2013-2014	2014-2015	2015-2016	2016-2017	2017-2018	2018-2019
Reading	81.9%	83.4%	84.9%	86.4%	87.9%	89.4%	90.9%	
Math	76.8%	78.5%	80.5%	82.5%	84.5%	86.5%	88.5%	
Four-Year Grad. Rate	73.6%	75.9%	78.2%	80.5%	82.8%	85.1%	87.4%	90.0%

# Gap Closing – Differences from AYP

- AYP calculation yielded a “Met” or “Not Met” label.
- AMO calculation yields a letter grade of “A” through “F”.
- Final AMO grade of “C” or better analogous to “meeting” AYP

# Gap Closing – Differences from AYP

- If AMO is not met, points are awarded based on amount of improvement (Gap Closing) between prior year and current year.
- No Safe Harbor provision
- No Growth provision



# Gap Closing – Differences from AYP

- **Attendance Rate used as demotion tool**
- **Participation Rate used as demotion tool**
- **Low subgroup performance on reading/math/graduation used as demotion tool**

# Gap Closing – Points Calculation

## Four Rules

1. If the AMO is met assign 100 points
2. If the amount of improvement exceeds the current year gap assign 100 points
3. If improvement is made, but it does not exceed the gap, assign points between zero and 100
4. If the performance declines, and AMO is not met, assign zero points

# Gap Closing – Points Calculation

**Rule 1 - If the AMO is met assign 100 points**

- **2014 AMOs**

- **Reading = 84.9%**

- **Math = 80.5%**

- **Graduation = 78.2%**

# Gap Closing – Points Calculation

**Rule 2 – If the amount of improvement exceeds the current year gap assign 100 points**

- **Calculation**

- **2014 Percentage – 2013 Percentage = Improvement**

- **2014 AMO – 2014 Percentage = Current Year Gap**

# Gap Closing – Points Calculation

**Rule 3 - If improvement is made, but it does not exceed the gap, assign points between zero and 100**

- **Calculation**

- **2014 Percentage – 2013 Percentage = Improvement**

- **2014 AMO – 2014 Percentage = Current Year Gap**

# Gap Closing – Points Calculation

**Rule 4 - If the performance declines, and AMO is not met, assign zero points**

- **Calculation**

- Compare 2014 percentage to 2013 percentage
- If 2014 percentage is smaller; and,
- If 2014 AMO is not met
- Award ZERO points

# Gap Closing – Points Calculation

$$\frac{\text{Improvement}}{\text{Current Year Gap}} \times 100 = \text{Points Awarded}$$

Calculation used to determine points awarded  
for  
Rules 2, 3 and 4

# Gap Closing

## Two Final Rules

1. Points are capped at 100
2. Points are “floored” at ZERO



# Gap Closing

**Once sub-component points are awarded, they are averaged to get the letter grade.**

**Note --- reading, math and graduation are weighted EQUALLY in the final calculation.**

# Gap Closing Demotions

- **Four rules can demote the preliminary letter grade.**
- **Two rules only apply if the preliminary grade equals an “A”**
- **Two rules apply to ALL letter grades, including an “F”**

# Gap Closing Demotions

**Cannot earn an “A” if a subgroup has a proficiency %  $\leq 70\%$ \***

**Cannot earn an “A” if a subgroup has a graduation %  $\leq 70\%$ \***

**\*- This is done by deducting 10 percentage points from the preliminary score or . 10.1 points in the special case where the school/district has a perfect score of 100%**

# Gap Closing Demotions

**Any preliminary grade will be demoted by one level if a subgroup has less than 95% participation rate\***

**Any preliminary grade will be demoted by one level if a subgroup has less than 93% attendance rate\***

**\*- This is done by deducting 10 percentage points from the preliminary score or 10.1 points in the special case where the school/district has a perfect score of 100%**

# Gap Closing

## Final Rules

- **Maximum of one letter grade demotion regardless of how many criteria are met**
- **Demotions handled through a 10 point deduction to move to next lower level (10.1 points for LEAs with 100% met)**
- **“F” grades also have the 10 point deduction**

# Gap Closing

## (Annual Measurable Objectives)

Gap Closing Letter Grade	Gap Closing Percentage
A	90% - 100%
B	80% - 89.9%
C	70% - 79.9%
D	60% - 69.9%
F	< 60%

# AMO Grades

<b>Grad Rate – Five Year Letter Grade</b>	<b>Districts</b>	<b>Buildings</b>
<b>A</b>	<b>28</b>	<b>607</b>
<b>B</b>	<b>183</b>	<b>518</b>
<b>C</b>	<b>112</b>	<b>339</b>
<b>D</b>	<b>96</b>	<b>310</b>
<b>F</b>	<b>191</b>	<b>1474</b>

# Report Card Components



## Progress

Value-Added Overall

Gifted Students

Progress with Lowest 20%

Students with Disabilities



# Progress Component

- **All Students** (overall rating of a school or district)
- **Gifted Students** (math, reading or superior cognitive only)
- **Students with Disabilities** (all students who have an IEP and take the OAA)
- **Students in the Lowest 20 Percent of Achievement Statewide** (based on distribution of scores for the entire state)

# Value-Added-Progress

Value-Added Letter Grade	Value-Added Gain Index
A	$\geq 2.0$
B	$\geq 1$ and $< 2$
C	$\geq -1$ and $< 1$
D	$\geq -2$ and $< -1$
F	$< -2$

# Overall Value Added

Grad Rate – Five Year Letter Grade	Districts	Buildings
A	281	1023
B	52	240
C	84	476
D	52	208
F	141	611

# Gifted Value Added

Grad Rate – Five Year Letter Grade	Districts	Buildings
A	62	164
B	77	266
C	270	788
D	98	272
F	52	170

# Lowest 20% Value Added

Grad Rate – Five Year Letter Grade	Districts	Buildings
A	87	298
B	97	426
C	296	1153
D	76	304
F	39	174

# Students with Disabilities

## Value Added

Grad Rate – Five Year Letter Grade	Districts	Buildings
A	97	312
B	105	394
C	255	954
D	59	280
F	79	247

# Report Card Components



# **K- 3 Literacy**

**2013-2014 – Measure Graded**

**2014-2015 – Component Graded**

---



# Report Card Components



## Prepared for Success

College Admission Test

Dual Enrollment

Industry Credentials

Honors Diplomas

Advanced Placement and International  
Baccalaureate

# Prepared for Success

1. **College Admission Test** *(participation rate and percent receiving non-remediation score)*
2. **Dual Enrollment Credits** *(percent earning at least three credits)*
3. **Industry Credentials** *(percent of students with a credential)*
4. **Honors Diplomas Awarded** *(percent of students with an Honors Diploma)*
5. **Advanced Placement** *(participation rate and percent scoring three or above)*
6. **International Baccalaureate Program** *(participation rate and percent scoring four or above)*

# **Prepared for Success**

**2013-2014 – Measures Reported**

**2014-2015 – Component Graded**

---

# Ohio

## New Local Report Card

District: Anytown School District  
Location: Hometown, Ohio  
Superintendent: Jane T. Doe  
District Report Card

### DISTRICT GRADE

Grade Coming in  
**2015**

### ACHIEVEMENT

Grade Coming in  
**2015**

### GAP CLOSING

Grade Coming in  
**2015**

### GRADUATION RATE

Grade Coming in  
**2015**

### PROGRESS

Grade Coming in  
**2015**

### PREPARED FOR SUCCESS

Grade Coming in  
**2015**

### K-3 LITERACY

Grade Coming in  
**2015**



#### Achievement

This grade represents the district's absolute academic achievement. The Achievement Component Grade will begin in the 2014-2015 school year, and is based on the district's Performance Indicators and Performance Index ratings.

Performance Index	Indicators Met
90-100%.....A	90-100%.....A
80-89.9%.....B	80-89.9%.....B
70-79.9%.....C	70-79.9%.....C
50-69.9%.....D	50-69.9%.....D
< 50%.....F	< 50%.....F
Weight of Accelerated Students.....	1.3



#### Graduation Rate

This grade represents the percentage of students whom entered the 9th grade and graduated 4 and 5 years later.

4-Year Graduation Rate	5-Year Graduation Rate
93-100%.....A	95-100%.....A
89-92.9%.....B	90-94.9%.....B
84-88.9%.....C	85-89.9%.....C
79-83.9%.....D	80-84.9%.....D
< 79%.....F	< 80%.....F



#### Prepared for Success (Reported in 2014)

This grade measures whether students who graduate are prepared for college or a career.

##### Prepared for Success

% of students graduating remediation free  
% of students graduating with an Industry Certificate  
% of students with a Honors Diploma

##### Post-Secondary Credit

% of students enrolled in A/P and scoring 3 or better  
% of students enrolled in IB and scoring 4 or better  
% of students with Dual Enrollment and receiving college credit



#### Gap Closing

This grade shows how well your district is doing in narrowing gaps in reading and math among students according to socio-economic, racial, ethnic or disability status.

Gap Closure
90-100%.....A
80-89.9%.....B
70-79.9%.....C
60-69.9%.....D
< 60%.....F



#### Progress

This grade represents the district's average annual level of improvement for each student (i.e., whether a student gained more or less than a year of knowledge and skills each year).

Value Added - Overall.....	A
Value Added - Gifted.....	B
Value Added - Students with Disabilities.....	C
Value Added - Lower 20%.....	D
Value Added - High School (Coming in 2016)	



#### K-3 Literacy (Reported in 2014)

This grade represents the improvement in reading for students in kindergarten through grade three.



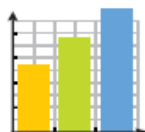
### Gap Closing

A-F Annual  
Measurable  
Objectives



### Achievement

A-F Performance  
Indicators  
A-F Performance  
Index



### Growth

A-F Value-added –  
Composite  
A-F Value-added –  
Gifted  
A-F Value-added –  
Disabilities  
A-F Value-added –  
Lowest 20%



### Prepared for Success\*

College Admission Test  
Participation and Score  
Dual Enrollment Credits  
Industry Credentials  
Honors Diplomas  
Awarded  
Advanced Placement  
and International  
Baccalaureate  
Participation and Scores  
College- and Career-  
Ready Assessments



### Graduation

A-F 4-year  
Graduation  
Rate  
A-F 5-year  
Graduation  
Rate



### Literacy Progress

A-F K-3 Literacy  
Rate\*\*

**2014-2015 School  
Year Overall Grade  
A-F**

# Local Report Card Rollout Timeline

## *August 2013*

### New Graded Measures

Performance Indicators

Performance Index

4 Year Graduation Rate

5 Year Graduation Rate

Annual Measureable Objectives (AMOs)

Value-Added: All Students

Value-Added: Gifted Students

Value-Added: Lowest 20% in  
Achievement

Value-Added: Students with Disabilities

### New Graded Component

None

**No Component  
or Overall Grade  
Calculated**

# Local Report Card Rollout Timeline

## *August 2014*

### New Graded Measure

K-3 Literacy Improvement

### New Graded Component

None

### New Reported Measures

College Admission Test

Dual Enrollment

Industry Credentials

Honors Diploma

Advanced Placement

International Baccalaureate

**No Component  
or Overall Grade  
Calculated**

# Local Report Card Rollout Timeline

## *August 2015*

### New Graded Measure

None

### New Reported Measure

College & Career Ready Assessment

### New Graded Components

Achievement

Progress

Gap Closing

Graduation Rate

K-3 Literacy

Prepared for Success

**Component and Overall Grade Calculated**



# Local Report Card Rollout Timeline

## *August 2016*

### New Graded Measure

Value-Added: High School

### New Graded Component

None

### New Reported Measure

None

**Component and Overall Grade Calculated**

# Success for Every Child



# Questions

