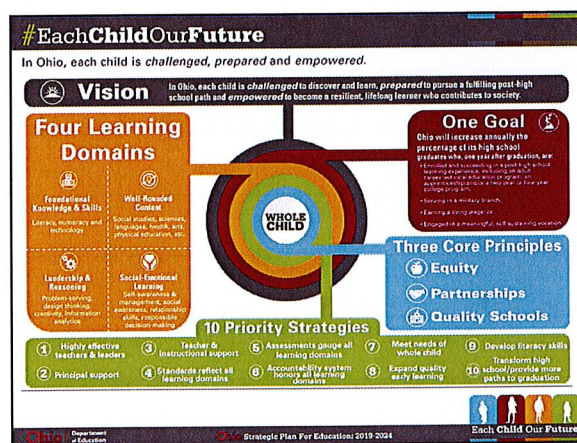


1



2

Office Updates	
Name	Title
Jo Hannah Ward	Director
Monica Drvota	Associate Director
Joseph Petrarca	Associate Director
Heldi Kleinman	Interim Assistant Director, Dispute Resolution
Chrissy Cline	Assistant Director, Urban Support Team
Shelley Beard	Assistant Director, Supports and Monitoring
Kara Waldron	Program Administrator, Data Team

Ohio Department of Education

3

## Special Education Rules and Operating Standards Changes

- Rule revisions happening this week
  - Engage stakeholders in discussions around the proposed changes to the *Operating Standards for the Education of Children with Disabilities*.

4

---

---

---

---

---

---

---

## Special Education Rules and Operating Standards Changes

- Obtain feedback on the rule and the proposed changes from stakeholders.
- Feedback will be reviewed, and revisions will be made before public comment period

5

---

---

---

---

---

---

---

## Special Education Rules and Operating Standards Changes

- Public Comment: Scheduled for early April
- Introduction to State Board: Rules will begin to be introduced to board beginning in June
  - Over the months to follow all rules will be presented then moved to committee vote
  - \* *Note: Dates are subject to change*

6

---

---

---

---

---

---

---

## Disproportionality

- ...is the overrepresentation of distinct student groups by ethnicity or race in special education.
- Some student groups are disproportionately identified with certain disabilities, placed in separate classrooms or schools and often disciplined with removal from the classroom...

7

---

---

---

---

---

---

---

## Categories of Analysis

Identification (All students ages 3-21)	Placement (Students with disabilities ages 6-21)	Discipline (Students with disabilities ages 3-21)
1. All Disabilities	8. Inside a regular class less than 40 percent of the day	10. Out-of-school suspensions and expulsions of 10 days or fewer
2. Intellectual Disabilities		11. Out-of-school suspensions and expulsions of more than 10 days
3. Specific Learning Disabilities	9. Inside separate schools and residential facilities	12. In-school suspensions of 10 days or fewer
4. Emotional Disturbance		13. In-school suspensions of more than 10 days
5. Speech or Language Impairments		14. Disciplinary removals in total
6. Other Health Impairments		
7. Autism		

8

---

---

---

---

---

---

---

## Improvement Plans for Students with Disabilities and Gifted

- The Plan (aka) Roadmap
- The Gifted section is analyzing equity data for economically disadvantaged and minority students

9

---

---

---

---

---


---

---

## Related Services

New dedicated staff focusing on related services:

- Bernadette Laughlin
- Educational Program Specialist
- Bernadette.Laughlin@education.ohio.gov



10

---

---

---

---

---

---


---

---

## Related Services Workgroup January 2018

Mandated by House Bill 49

"To improve the coordination of state, school and provider efforts to address the related services needs of students with disabilities."



11

---

---

---

---

---

---


---

---

## Recommendations

Recommendation One: Ensure special education services are adequately funded as part of the state funding formula.

Recommendation Two: Adopt and implement methods to improve the recruitment and retention of individuals in all related services professions.



12

---

---

---

---

---

---


---

---

## Recommendations

**Recommendation Three:** Create a full-time position at the Department of Education to oversee related services.

**Recommendation Four:** Conduct a review of the licensure structure currently used by the Department as it applies to related services personnel.



13

---

---

---

---

---

---

---

---

## Recommendation Five

Support a cultural shift with the goal that related services are viewed as part of a collaborative, student-driven, team-based approach to meet the needs of the whole child.



14

---

---

---

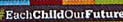
---

---


---

---


---



## By the Numbers



Special Education Data



15

---

---

---

---

---

---

---

---

Dispute Resolution: Top Issues				
2016	2017	2018	2019	2020
IEP Questions	IEP Questions	IEP Questions	IEP Questions	Behavior
ETR Questions	Behavior	Behavior	Behavior	IEP Questions
Behavior Issues	ETR Questions	ETR Questions	ETR Questions	ETR Questions
LRE	LRE/Suspension, Detention, Expulsion	Placement	Placement	Suspension / Expulsion / Detention
Suspension, Detention, Expulsion	Complaint Questions	Scholarship programs and Detention, Suspension / Expulsion	Suspension / Expulsion / Detention	Enrollment

Ohio Department of Education

16

---

---

---

---

---

---

---

---

Dispute Resolution: Top 10	
Issue	Number of Calls
Behavior Concerns	53
ETR- Identification Issues	30
Suspension/Expulsion/Detention	17
Enrollment	16
Independent Education Evaluations	15
Scholarship	13
IEP Implementation	12
Non Public Schools	12
Mediation	10
Prior Written Notice	10
Staff/Specific Issue	10
IEP Meeting Attendance	10

Ohio Department of Education

17

---

---

---

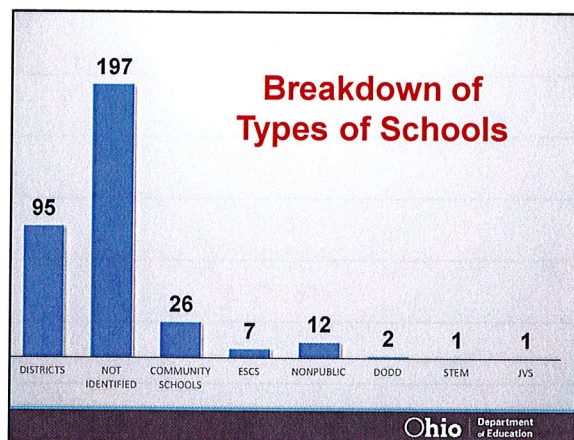
---

---

---

---

---



18

---

---

---

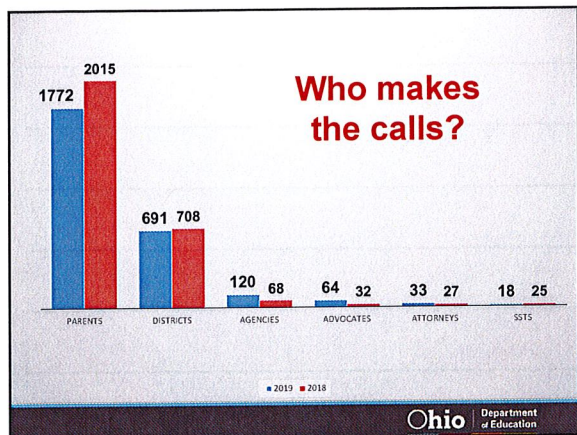
---

---

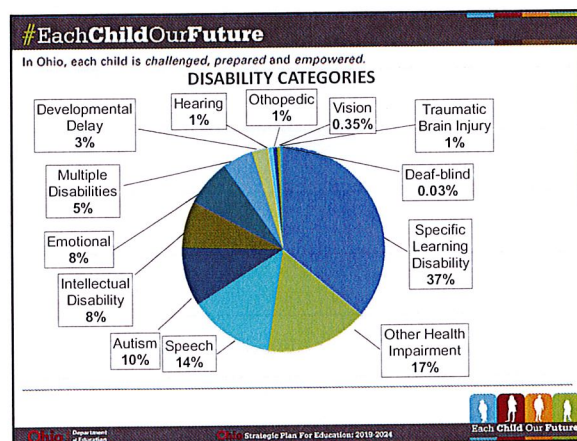
---

---

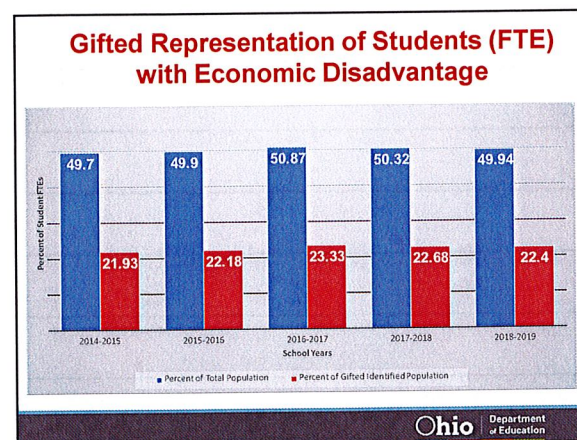
---



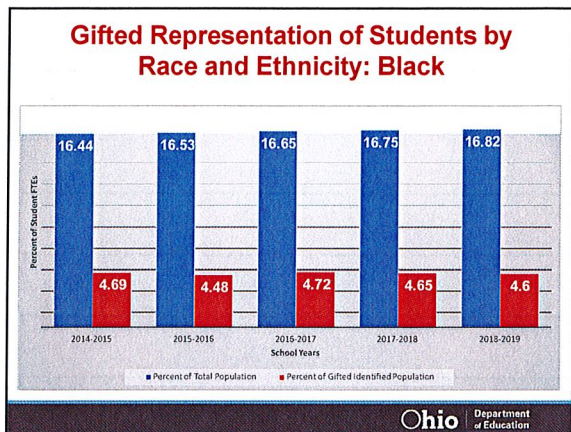
19



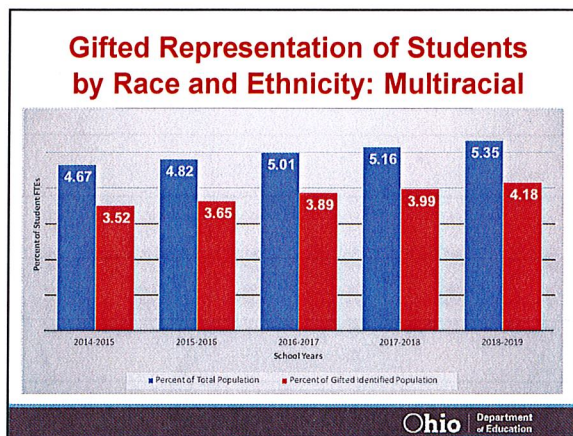
20



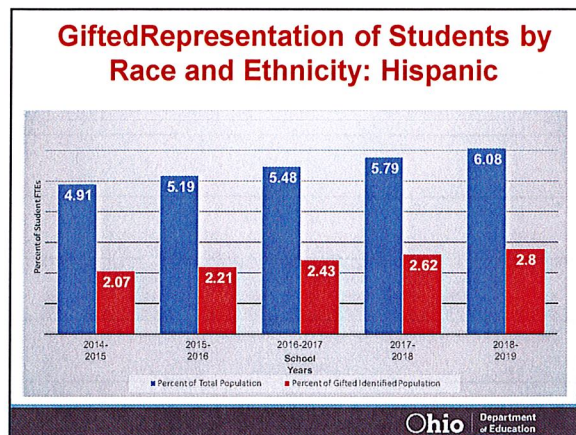
21



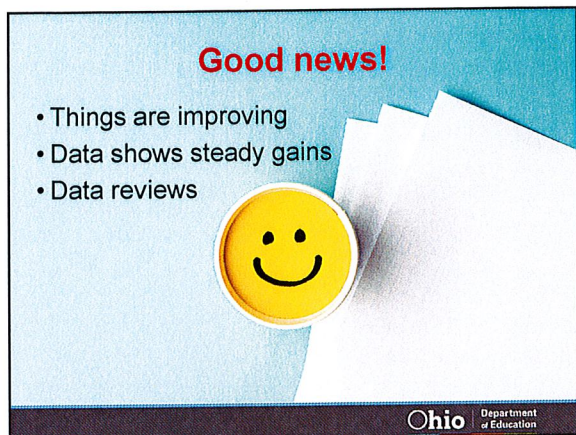
22



23



24



25

---

---

---

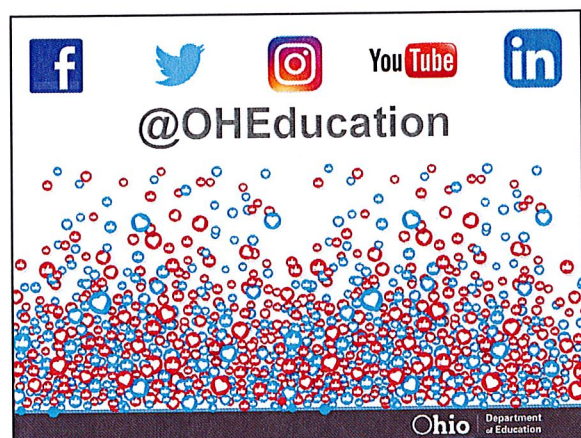
---

---

---

---

---



26

---

---

---

---

---

---

---

---



27

---

---

---

---

---

---

---

---

