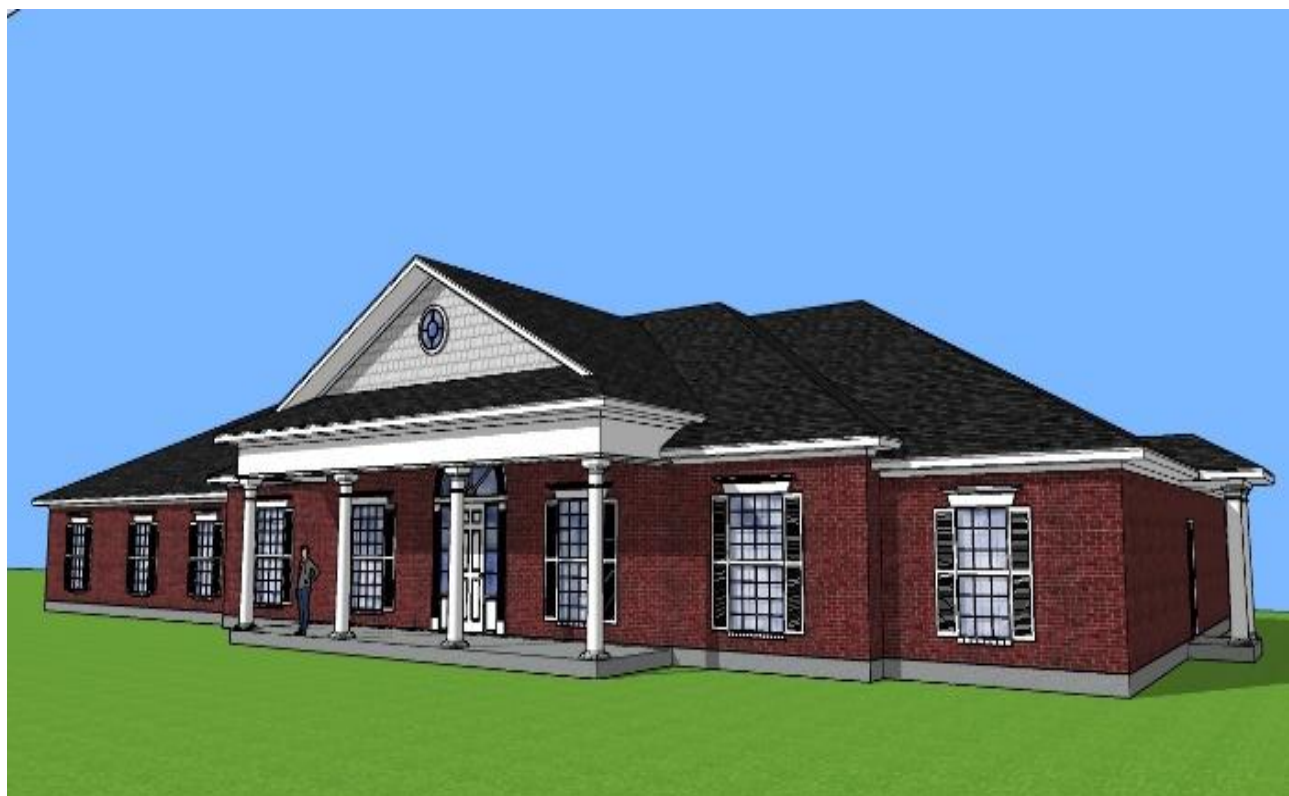


Amy's House  
Central Texas Chapter of TRIO  
(Transplant Recipients International Organization)



**2114 South 15<sup>th</sup> Street, Temple, Texas**

This 8-bedroom house features a large kitchen, living, and dining room as well as an office, a conference room, and a laundry room. Each bedroom has its own bathroom and is appointed with two double beds, a recliner, an extra chair, a flat-screen television, and plenty of storage.

[www.amyhouse-temple.org](http://www.amyhouse-temple.org)

### *Meet Amy...*

Amy was a talented speech therapist, loving wife, fantastic mother, and beloved daughter, sister, cousin, niece, and friend. Her sudden death in 2012 at the age of 38 was devastating for her loved ones. But because Amy opted to be an organ donor, her death has resulted in gifts of life for some recipients and improvement in the quality of life for other recipients.



Amy's lungs saved the life of Carrie, a young mother of twins, who had struggled all her life with cystic fibrosis. The photo shows Carrie before her transplant and then a year after receiving Amy's lungs.



### The Need

Baylor Scott & White Temple Medical Center is the only transplant center between Dallas and Austin and has performed over 1,250 transplants, including kidney, pancreas, heart and LVAD, since the program began in 1997. Patients receive compassionate, patient centered care from a comprehensive multidisciplinary transplant team that includes highly experienced transplant surgeons, nurses, social workers, financial coordinators, pharmacists and multiple specialists throughout all phases of transplant.

Patients suffering from end stage organ disease and facing the need for life saving transplant surgery must deal with many challenges. Medical care often requires them to travel far from home and many patients awaiting transplant, under-going surgery or having follow-up care must stay in Temple for many months. During this difficult time, and in addition to their tremendous medical expenses, patients and their families are burdened with the high cost of lodging, the loneliness of being away from their loved ones and the fear of losing their jobs, homes and way of life.

Conservative projections at Baylor Scott & White Temple Medical Center indicate BSWH Temple to provide over 160 transplants in 2020. The recent addition of a new Chair of Cardiovascular Surgery will enable BSWH to expand heart referrals and the number of heart transplants. Temporary affordable lodging near Baylor Scott & White Medical Center is a crucial need for transplant patients and their caregivers. Amy's House, a transplant hospitality house sponsored by TRIO Central Texas, is currently under construction in Temple, Texas. According to UNOS Transplant Living, the cost for housing prior to and after an organ transplant can be one of the most expensive non-medical costs incurred. As demonstrated in the chart below, housing costs can add up quickly.

|                            |  |
|----------------------------|--|
| Week 1-2 pre-surgery       | A few days for final testing                               |
| Week 1-2 after surgery     | Recovery in hospital                                       |
| Month 1 after surgery      | Two appointments each week                                 |
| Month 2 after surgery      | One appointment each week for consultation and lab work    |
| Months 3 & 4 after surgery | Every two weeks for consultation and lab work              |
| Month 6 after surgery      | One a month for labs and every 3-6 months for consultation |
| Year 1+                    | Routine labs every 3-6 months and annual visits            |

### The Solution

The Central Texas Chapter of Transplant Recipients International Organization (TRIO) was founded in 2014 to address the needs of transplant patients at Baylor Scott and White Temple Medical Center (BSW), to provide support for donor families, and to help educate the public about the need for and benefits of organ and tissue donation. The members of the organization discovered that one of the most pressing problems for transplant recipients is finding affordable lodging during the often-lengthy process of receiving a transplant. To address that need, a travel trailer was purchased and placed on the campus of BSW, but the trailer can only serve one family at a time and presents other difficulties for people recovering from surgery. Therefore, TRIO is building Amy's House, to better accommodate the growing number of BSW transplant patients, the majority of whom live long distances from the medical center and are from low socio-economic families.

Amy's House will offer transplant patients and their families a place to stay where they can find support and share experiences with others, in the comfort of a home-like environment. Amy's House is a new, freestanding facility near Baylor Scott & White Temple Medical Center. Built with the specific needs of transplant patients and families in mind it includes: 8 private bedrooms and baths, a fully equipped kitchen, a great room, a small library/meditation room, conference room, office and outdoor patio all situated on a beautiful, tranquil lot.

The City of Temple donated the land for the project and TRIO has received grants from the JLH Foundation of Houston and the Mabee Foundation of Tulsa that will cover the cost of construction. These generous donations have covered the cost of construction but there are many other needs to make this house a home away from home. Funds are needed to purchase furniture and other items for the common living areas, bedrooms, kitchen and bathrooms.